

COMMUNITY PARTNERS



VISIT OUR WEBSITE
<https://www.accesspointri.org/RI-Map.html>

TRAINING LOCATION
1240 Park Ave, Cranston, RI 02910

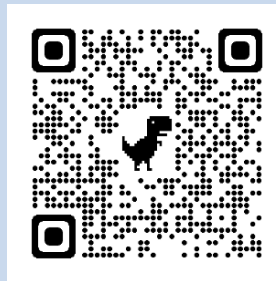
REAL JOBS

Rhode Island

Prepare For Your Retail Career



APPLY TODAY!



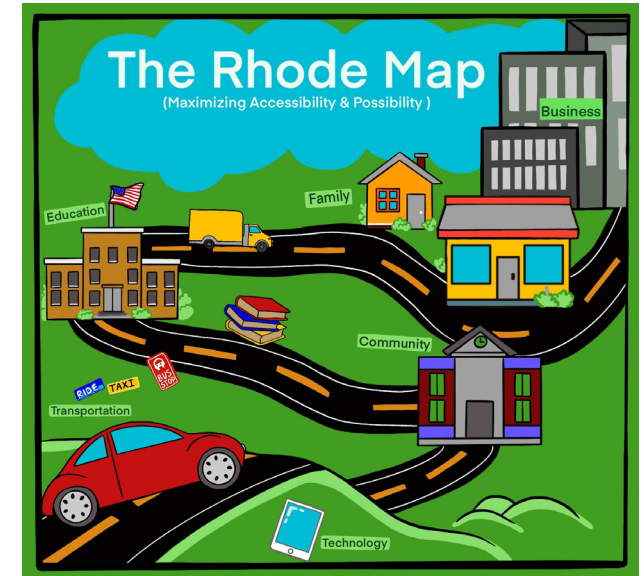
CONTACT

James O'Connor
Workforce Initiative Program
401-943-1866
Cell: 401-200-1230
joconnor@accesspointri.org



AccessPoint_{RI}

THE RHODE M.A.P
MAXIMIZING ACCESSIBILITY & POSSIBILITY



Your next step to
a fulfilling career.

111 Comstock Pkwy, Cranston, RI 02921

+ Retail Customer Service Training

What will happen within the 8 weeks of training?

LEARN ON-THE-JOB SKILLS

- Cash register operation
- Retail store operations
- CVS corporate culture
- Enhanced customer service skills
- Optional paid 2-week externship

DEVELOP ESSENTIAL PROFESSIONAL SKILLS

- Communication
- Problem solving & critical thinking
- Collaboration

PRE-EMPLOYMENT PREPARATION

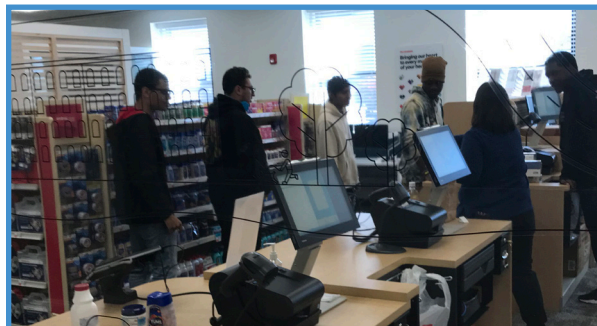
- Customized resume development
- Mastering the art of the job interview
- Networking strategies for employment
- Integrating technology/online job applications

All participants will be encouraged and supported to apply for a position within CVS or any other retail company.

+ Program Training Essentials and Features

Woonsocket Education Center

CVS HEALTH WORKFORCE INNOVATION TALENT CENTER



IN PERSON AND VIRTUAL INSTRUCTION AVAILABLE!

Customized job development is offered if necessary.

+ AccessPointRI Additional Services

Transition Services Students 18 - 21 Years Old

Our transition services meet the requirements of the Rhode Island Department of Education's Employment First policy.

Students beginning at age eighteen, in conjunction with the IEP process, have the opportunity to engage in person-centered planning, create a personalized career development plan and participate in meaningful work opportunities.

SUPPORTIVE EMPLOYMENT SERVICES

- Vocational evaluations
- Skill development
- Referrals for benefits planning
- Job exploration and placement
- On-the-job orientation and training
- Transportation
- Job coaching as needed
- Ongoing career development
- ORS Vendor

FOR MORE INFORMATION, PLEASE VISIT:

<https://www.accesspointri.org/transition.htm>