



Rhode Island Department of Labor and Training

Weekly Update of Claims Activity

Week Ending: January 9, 2010

Unemployment Insurance

Initial Claims – 3,600 initial claims were processed during the week ending 1/9/10, an increase of 840 claims from the previous week, and an increase of 277 from a year ago.

Continued Claims – 19,963 continued claims were processed during the week of 1/9/10, an increase of 1,592 from the previous week and a decrease of 4,409 from a year ago.

Workshare – gives employers an alternative to layoffs by allowing employees to work reduced hours and collect a percentage of regular UI benefits to compensate for lost pay. This week, 315 initial claims and 2,690 continued claims were processed. An estimated 78 layoffs were prevented this week, as a result of Workshare.

Emergency Unemployment Compensation 08 – EUC08, which became effective July 6, 2008, provides up to 53 weeks of federally funded benefits to eligible individuals who exhausted their UI claims. This week there were 809 new EUC08 claims processed and 19,093 continued claims processed (7,743 under tier I, 4,900 under tier II, 6,406 under tier III and 44 under tier IV).

Extended Benefits – are payable to individuals who have exhausted EUC08 claims. This week, 5 new EB claims and 1,704 continued EB claims were processed.

Exhaustions – 502 individuals exhausted their regular payments this week, a decrease of 141 from the previous week and an increase of 10 from a year ago. There was 1 individual that exhausted EUC08 and 159 individuals that exhausted EB.

Temporary Disability Insurance

Temporary Disability Insurance – 722 initial claims and 6,733 continued claims were processed for Temporary Disability Insurance. The average weekly TDI payment is \$435 per week. Rhode Island is currently paying an average of 10.8 weeks per new claim.

	Initial Claims	New Claims	Additional Claims	Continued Claims	Current Week	Previous Week	Year Ago	Two Years Ago
Total - All programs*	5,028	3,048	1,980	44,111	49,139	44,982	41,129	23,846
UI Claims	3,600	2,196	1,404	19,963	23,563	21,131	27,695	22,139
Change from:								
Previous Week	840	317	523	1,592	2,432			
Year Ago	277	230	47	-4,409	-4,132			
Two Years Ago	118	-159	277	1,306	1,424			
EUC08 Claims	1,050	809	241	19,093	20,143	19,472	10,120	
Extended Benefits	26	5	21	1,704	1,730	1,864	2	
UI Exhaustions	-	-	-	502	502	643	492	435
EUC08 Exhaustions	-	-	-	1	1	1	0	-
EB Exhaustions	-	-	-	159	159	142	1	-
Workshare	315	28	287	2,690	3,005	1,773	2,322	624
Workshare Equivalency	78	11	67	696	774	437	964	224
Interstate-Liable	37	10	27	661	698	742	990	1,083
TDI Claims	722	584	138	6,733	7,455	6,937	10,765	9,041
Change from:								
Previous Week	286	237	49	232	518			
Year Ago	-162	-146	-16	-3,148	-3,310			

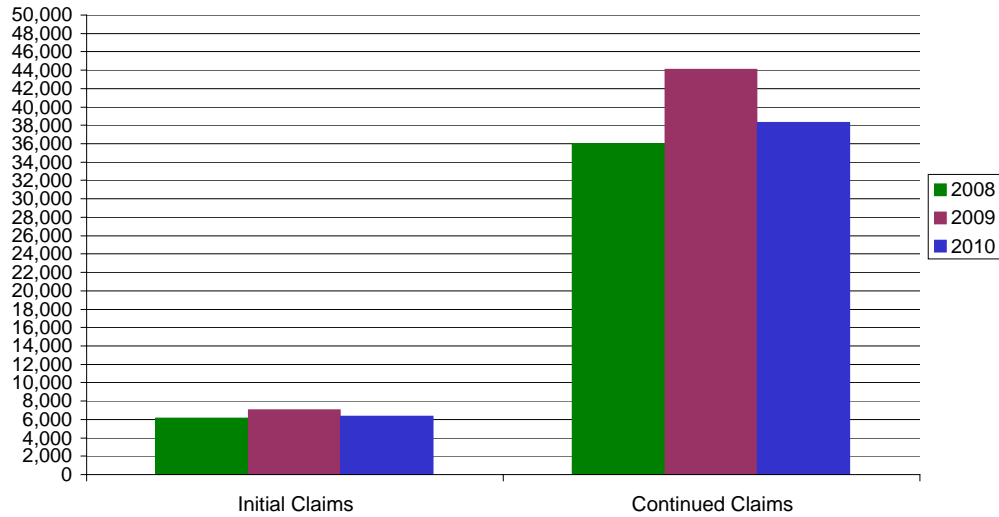
* Includes UI, EUC08, EB, Workshare & Interstate Liable.

a product of: Labor Market Information unit

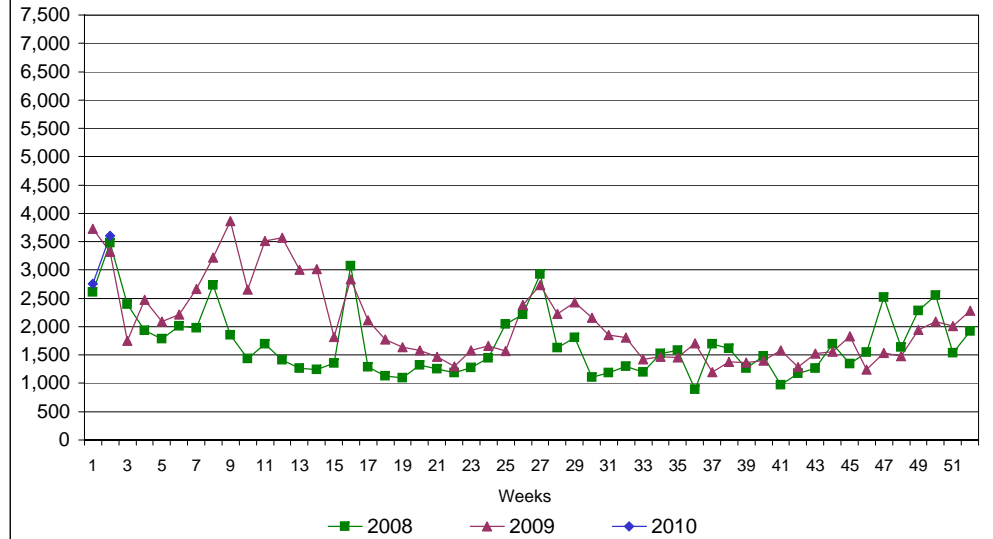
Rhode Island Department of Labor and Training

January 9, 2010

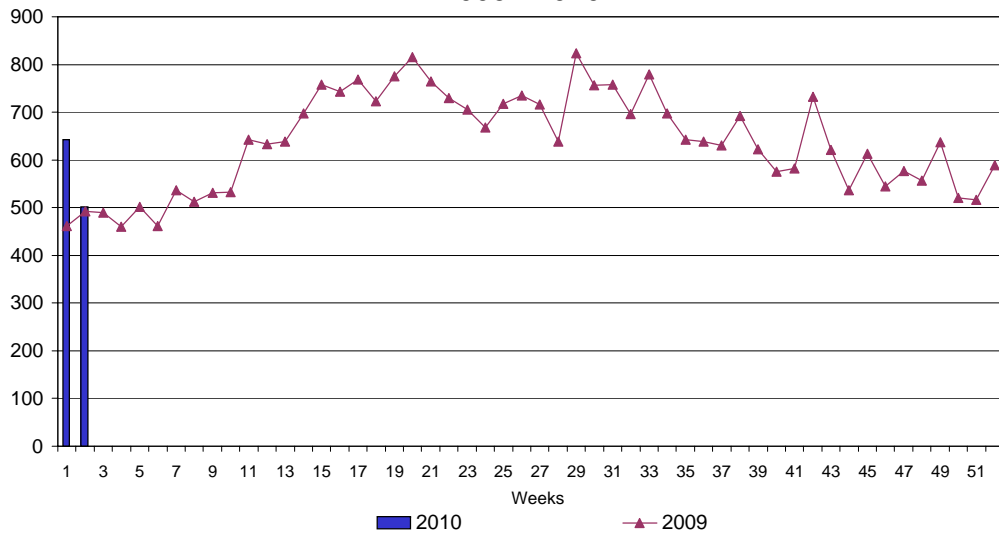
UI Claims Comparison Year to Date



UI Initial Claims 2008 - 2010



UI Exhaustions 2009 - 2010



TDI Claims Comparison Year to Date

