



Rhode Island Department of Labor and Training

Weekly Update of Claims Activity

Week Ending: January 16, 2010

Unemployment Insurance

Initial Claims – 2,956 initial claims were processed during the week ending 1/16/10, a decrease of 644 claims from the previous week, and an increase of 1,200 from a year ago.

Continued Claims – 22,041 continued claims were processed during the week of 1/16/10, an increase of 2,078 from the previous week and a decrease of 619 from a year ago.

Workshare – gives employers an alternative to layoffs by allowing employees to work reduced hours and collect a percentage of regular UI benefits to compensate for lost pay. This week, 420 initial claims and 1,854 continued claims were processed. An estimated 92 layoffs were prevented this week, as a result of Workshare.

Emergency Unemployment Compensation 08 – EUC08, which became effective July 6, 2008, provides up to 53 weeks of federally funded benefits to eligible individuals who exhausted their UI claims. This week there were 593 new EUC08 claims processed and 19,009 continued claims processed (7,400 under tier I, 4,782 under tier II, 6,461 under tier III and 366 under tier IV).

Extended Benefits – are payable to individuals who have exhausted EUC08 claims. This week, 3 new EB claims and 1,539 continued EB claims were processed.

Exhaustions – 622 individuals exhausted their regular payments this week, an increase of 120 from the previous week and an increase of 133 from a year ago. There were 4 individuals that exhausted EUC08 and 173 individuals that exhausted EB.

Temporary Disability Insurance

Temporary Disability Insurance – 1,255 initial claims and 7,808 continued claims were processed for Temporary Disability Insurance. The average weekly TDI payment is \$429 per week. Rhode Island is currently paying an average of 10.7 weeks per new claim.

	Initial Claims	New Claims	Additional Claims	Continued Claims	Current Week	Previous Week	Year Ago	Two Years Ago
Total - All programs*	4,223	2,536	1,687	45,161	49,384	49,139	37,589	22,369
UI Claims	2,956	1,841	1,115	22,041	24,997	23,563	24,416	20,611
Change from:								
Previous Week	-644	-355	-289	2,078	1,434			
Year Ago	1,200	809	391	-619	581			
Two Years Ago	560	117	443	3,826	4,386			
EUC08 Claims	779	593	186	19,009	19,788	20,143	9,766	
Extended Benefits	21	3	18	1,539	1,560	1,730	2	
UI Exhaustions	-	-	-	622	622	502	489	313
EUC08 Exhaustions	-	-	-	4	4	1	1	-
EB Exhaustions	-	-	-	173	173	159	0	-
Workshare	420	68	352	1,854	2,274	3,005	2,407	674
Workshare Equivalency	92	18	74	762	854	774	1,142	219
Interstate-Liable	47	31	16	718	765	698	998	1,084
TDI Claims	1,255	1,050	205	7,808	9,063	7,455	9,014	9,309
Change from:								
Previous Week	533	466	67	1,075	1,608			
Year Ago	270	218	52	-221	49			

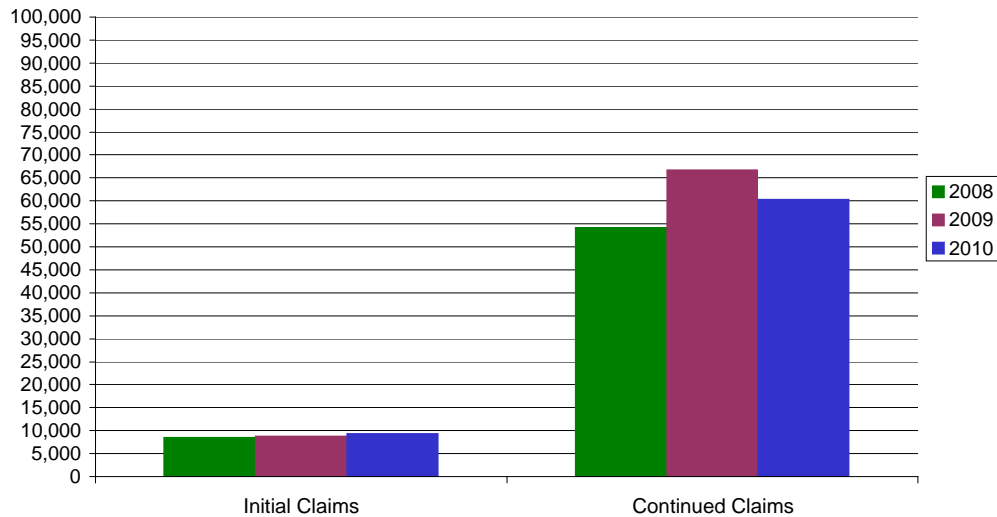
* Includes UI, EUC08, EB, Workshare & Interstate Liable.

a product of: Labor Market Information unit

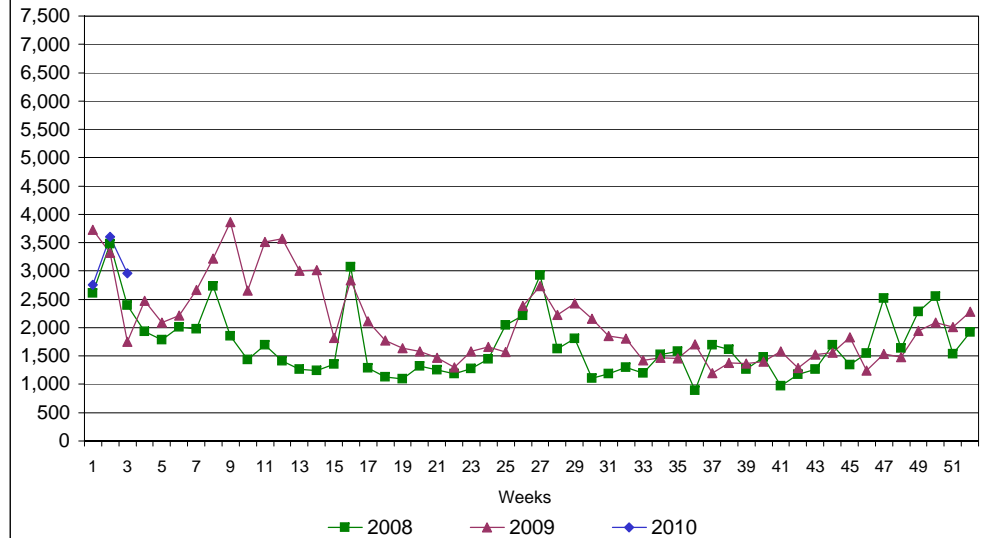
Rhode Island Department of Labor and Training

January 16, 2010

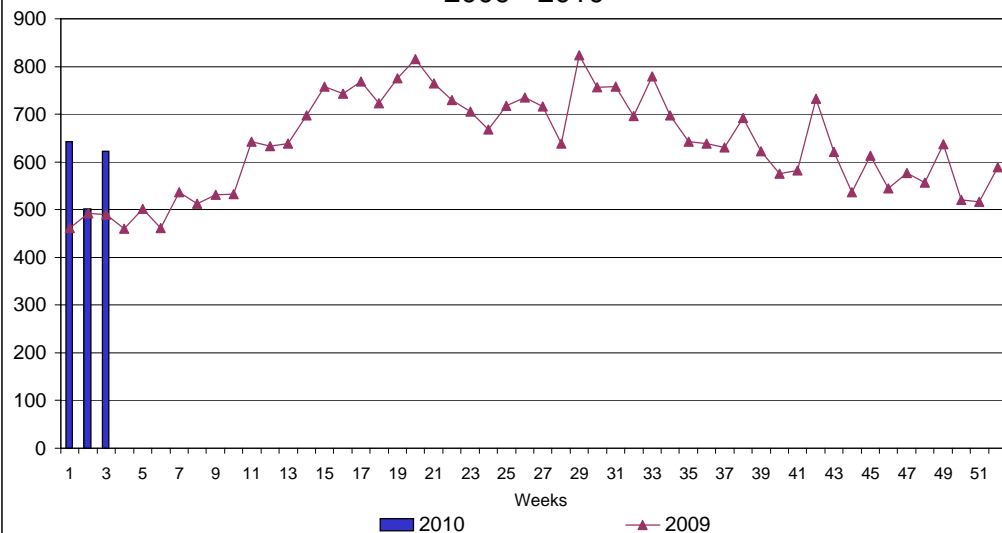
UI Claims Comparison Year to Date



UI Initial Claims 2008 - 2010



UI Exhaustions 2009 - 2010



TDI Claims Comparison Year to Date

