



Rhode Island Department of Labor and Training

Weekly Update of Claims Activity

Week Ending: February 20, 2010

Unemployment Insurance

Initial Claims – 2,582 initial claims were processed during the week ending 2/20/10, an increase of 557 claims from the previous week, and a decrease of 639 from a year ago.

Continued Claims – 22,170 continued claims were processed during the week of 2/20/10, an increase of 379 from the previous week and a decrease of 5,673 from a year ago.

Workshare – gives employers an alternative to layoffs by allowing employees to work reduced hours and collect a percentage of regular UI benefits to compensate for lost pay. This week, 291 initial claims and 2,648 continued claims were processed. An estimated 78 layoffs were prevented this week, as a result of Workshare.

Emergency Unemployment Compensation 08 – EUC08, which became effective July 6, 2008, provides up to 53 weeks of federally funded benefits to eligible individuals who exhausted their UI claims. This week there were 794 new EUC08 claims processed and 19,609 continued claims processed (6,851 under tier I, 4,935 under tier II, 6,459 under tier III and 1,364 under tier IV).

Extended Benefits – are payable to individuals who have exhausted EUC08 claims. This week, 22 new EB claims and 831 continued EB claims were processed.

Exhaustions – 560 individuals exhausted their regular payments this week, a decrease of 11 from the previous week and an increase of 48 from a year ago. There were 189 individuals that exhausted EUC08 and 141 individuals that exhausted EB.

Temporary Disability Insurance

Temporary Disability Insurance – 700 initial claims and 7,899 continued claims were processed for Temporary Disability Insurance. The average weekly TDI payment is \$426 per week. Rhode Island is currently paying an average of 10.8 weeks per new claim.

	Initial Claims	New Claims	Additional Claims	Continued Claims	Current Week	Previous Week	Year Ago	Two Years Ago
Total - All programs*	3,950	2,358	1,592	45,962	49,912	48,086	46,293	23,750
UI Claims	2,582	1,453	1,129	22,170	24,752	23,816	31,064	21,537
Change from:								
Previous Week	557	217	340	379	936			
Year Ago	-639	-434	-205	-5,673	-6,312			
Two Years Ago	-155	396	-551	3,370	3,215			
EUC08 Claims	998	794	204	19,609	20,607	20,350	11,210	
Extended Benefits	35	22	13	831	866	1,000	89	
UI Exhaustions	-	-	-	560	560	571	512	307
EUC08 Exhaustions	-	-	-	189	189	316	115	-
EB Exhaustions	-	-	-	141	141	126	7	-
Workshare	291	67	224	2,648	2,939	2,168	2,956	1,193
Workshare Equivalency	78	17	61	653	731	533	816	318
Interstate-Liable	44	22	22	704	748	752	974	1,020
TDI Claims	700	585	115	7,899	8,599	8,214	7,752	9,876
Change from:								
Previous Week	-256	-208	-48	641	385			
Year Ago	-259	-193	-66	1,106	847			

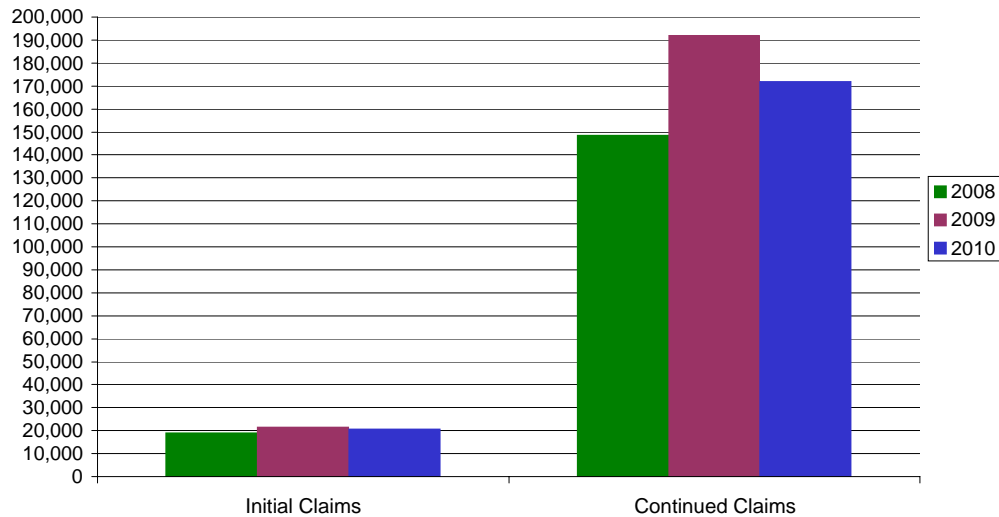
* Includes UI, EUC08, EB, Workshare & Interstate Liable.

a product of: Labor Market Information unit

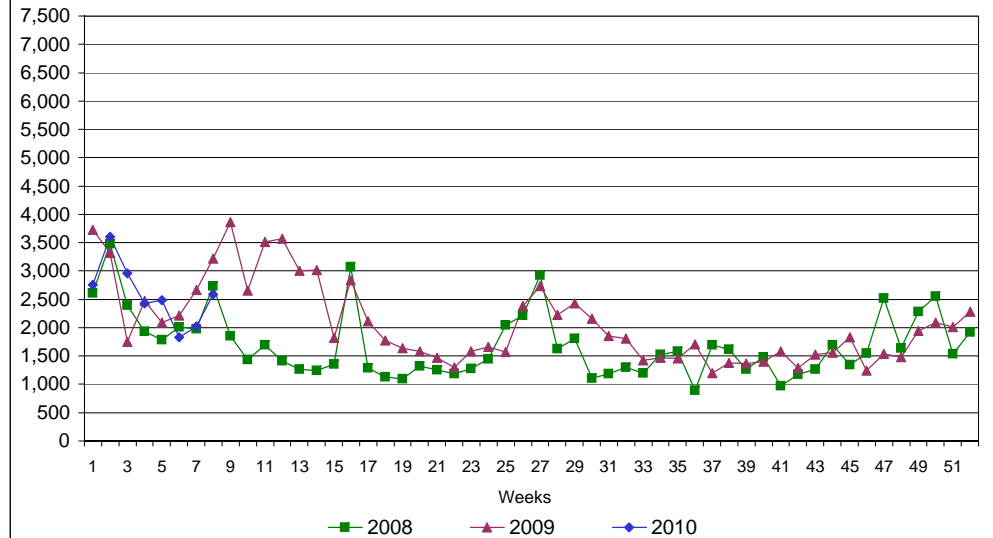
Rhode Island Department of Labor and Training

February 20, 2010

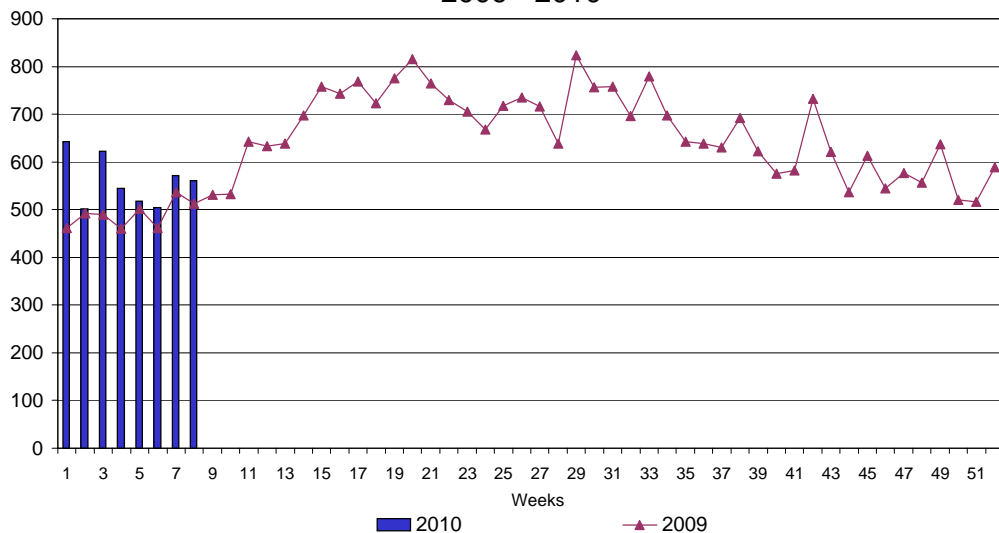
UI Claims Comparison Year to Date



UI Initial Claims 2008 - 2010



UI Exhaustions 2009 - 2010



TDI Claims Comparison Year to Date

