



Rhode Island Department of Labor and Training

Weekly Update of Claims Activity

Week Ending: February 27, 2010

Unemployment Insurance

Initial Claims – 2,327 initial claims were processed during the week ending 2/27/10, a decrease of 255 from the previous week, and a decrease of 1,537 from a year ago. For the first nine weeks of the year the number of initial claims filed are running 10.1 percent below last year and 9.7 percent above two years ago.

Continued Claims – 23,933 continued claims were processed during the week of 2/27/10, an increase of 1,763 from the previous week and a decrease of 4,684 from a year ago. The number of continued claims filed to date is down 12.7 percent from a year ago and up 13.6 percent from two years ago.

Workshare – gives employers an alternative to layoffs by allowing employees to work reduced hours and collect a percentage of regular UI benefits to compensate for lost pay. This week, 439 initial claims and 2,517 continued claims were processed. An estimated 99 layoffs were prevented this week, as a result of Workshare.

Emergency Unemployment Compensation 08 – EUC08, which became effective July 6, 2008, provides up to 53 weeks of federally funded benefits to eligible individuals who exhausted their UI claims. This week there were 734 new EUC08 claims processed and 19,336 continued claims processed (6,937 under tier I, 5,035 under tier II, 5,324 under tier III and 2,040 under tier IV).

Extended Benefits – are payable to individuals who have exhausted EUC08 claims. This week, 32 new EB claims and 742 continued EB claims were processed.

Exhaustions – 558 individuals exhausted their regular payments this week, a decrease of 2 from the previous week and an increase of 27 from a year ago. There were 261 individuals that exhausted EUC08 and 121 individuals that exhausted EB.

Temporary Disability Insurance

Temporary Disability Insurance – 1,027 initial claims and 7,826 continued claims were processed for Temporary Disability Insurance. The average weekly TDI payment is \$432 per week. Rhode Island is currently paying an average of 10.7 weeks per new claim.

	Initial Claims	New Claims	Additional Claims	Continued Claims	Current Week	Previous Week	Year Ago	Two Years Ago
Total - All programs*	3,742	1,962	1,780	47,195	50,937	49,912	48,723	23,966
UI Claims	2,327	1,067	1,260	23,933	26,260	24,752	32,481	22,328
Change from:								
Previous Week	-255	-386	131	1,763	1,508			
Year Ago	-1,537	-1,701	164	-4,684	-6,221			
Two Years Ago	479	233	246	3,453	3,932			
EUC08 Claims	908	734	174	19,336	20,244	20,607	11,089	
Extended Benefits	43	32	11	742	785	866	190	
UI Exhaustions	-	-	-	558	558	560	531	307
EUC08 Exhaustions	-	-	-	261	261	189	328	-
EB Exhaustions	-	-	-	121	121	141	18	-
Workshare	439	120	319	2,517	2,956	2,939	3,935	586
Workshare Equivalency	99	28	71	626	725	731	1,077	174
Interstate-Liable	25	9	16	667	692	748	1,028	1,052
TDI Claims	1,027	831	196	7,826	8,853	8,599	8,420	9,604
Change from:								
Previous Week	327	246	81	-73	254			
Year Ago	356	267	89	77	433			

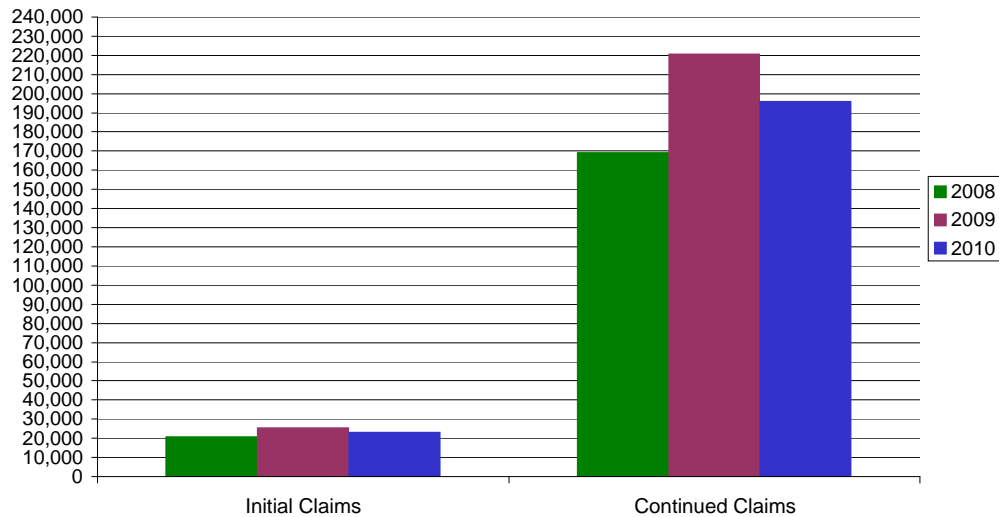
* Includes UI, EUC08, EB, Workshare & Interstate Liable.

a product of: Labor Market Information unit

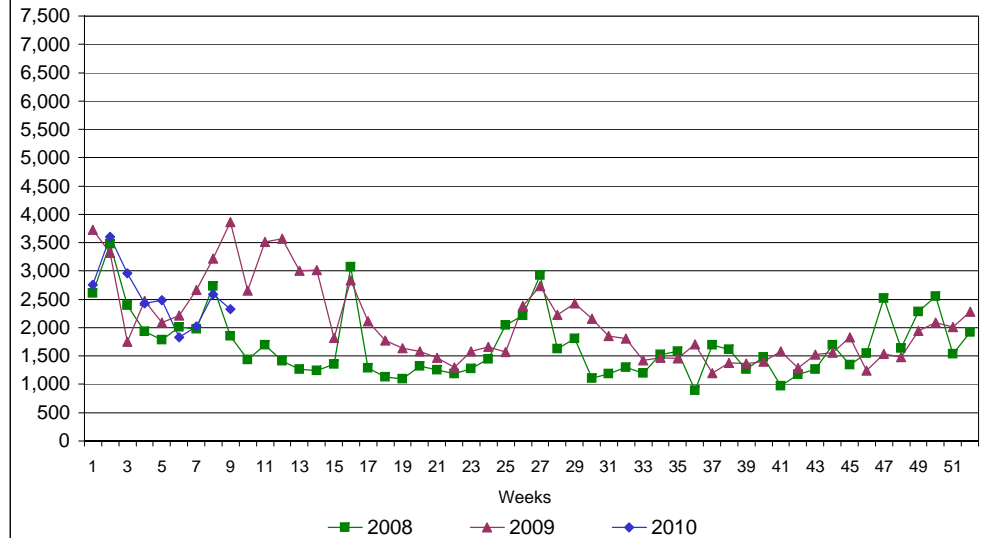
Rhode Island Department of Labor and Training

February 27, 2010

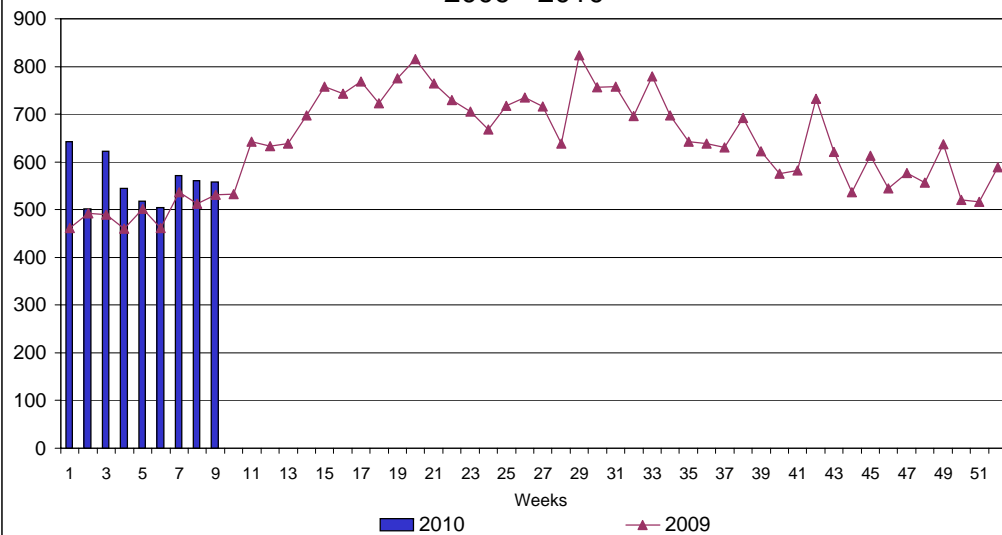
UI Claims Comparison Year to Date



UI Initial Claims 2008 - 2010



UI Exhaustions 2009 - 2010



TDI Claims Comparison Year to Date

