



## Rhode Island Department of Labor and Training

# *Weekly Update of Claims Activity*

**Week Ending: March 6, 2010**

### ***Unemployment Insurance***

**Initial Claims** – 1,688 initial claims were processed during the week ending 3/6/10, a decrease of 639 from the previous week, and a decrease of 963 from a year ago. For the first ten weeks of the year the number of initial claims filed are running 13.3 percent below last year and 10.1 percent above two years ago.

**Continued Claims** – 23,081 continued claims were processed during the week of 3/6/10, a decrease of 852 from the previous week and a decrease of 5,990 from a year ago. The number of continued claims filed to date is down 14.1 percent from a year ago and up 14.3 percent from two years ago.

**Workshare** – gives employers an alternative to layoffs by allowing employees to work reduced hours and collect a percentage of regular UI benefits to compensate for lost pay. This week, 310 initial claims and 2,644 continued claims were processed. An estimated 76 layoffs were prevented this week, as a result of Workshare.

**Emergency Unemployment Compensation 08** – EUC08, which became effective July 6, 2008, provides up to 53 weeks of federally funded benefits to eligible individuals who exhausted their UI claims. This week there were 661 new EUC08 claims processed and 19,339 continued claims processed (6,758 under tier I, 4,867 under tier II, 5,150 under tier III and 2,564 under tier IV).

**Extended Benefits** – are payable to individuals who have exhausted EUC08 claims. This week, 40 new EB claims and 647 continued EB claims were processed.

**Exhaustions** – 509 individuals exhausted their regular payments this week, a decrease of 49 from the previous week and a decrease 24 from a year ago. There were 337 individuals that exhausted EUC08 and 116 individuals that exhausted EB.

### ***Temporary Disability Insurance***

**Temporary Disability Insurance** – 728 initial claims and 7,706 continued claims were processed for Temporary Disability Insurance. The average weekly TDI payment is \$434 per week. Rhode Island is currently paying an average of 10.8 weeks per new claim.

	Initial Claims	New Claims	Additional Claims	Continued Claims	Current Week	Previous Week	Year Ago	Two Years Ago
<b>Total - All programs*</b>	2,942	1,579	1,363	46,488	49,430	50,937	45,063	22,295
<b>UI Claims</b>	1,688	795	893	23,081	24,769	26,260	31,722	19,862
Change from:								
Previous Week	-639	-272	-367	-852	-1,491			
Year Ago	-963	-1,158	195	-5,990	-6,953			
Two Years Ago	251	-201	452	4,656	4,907			
<b>EUC08 Claims</b>	866	661	205	19,339	20,205	20,244	10,532	
<b>Extended Benefits</b>	52	40	12	647	699	785	273	
<b>UI Exhaustions</b>	-	-	-	509	509	558	533	351
<b>EUC08 Exhaustions</b>	-	-	-	337	337	261	139	-
<b>EB Exhaustions</b>	-	-	-	116	116	121	3	-
<b>Workshare</b>	310	76	234	2,644	2,954	2,956	1,648	1,400
<b>Workshare Equivalency</b>	76	20	56	653	729	725	570	384
<b>Interstate-Liable</b>	26	7	19	777	803	692	888	1,033
<b>TDI Claims</b>	728	599	129	7,706	8,434	8,853	7,068	10,713
Change from:								
Previous Week	-299	-232	-67	-120	-419			
Year Ago	-201	-156	-45	1,567	1,366			

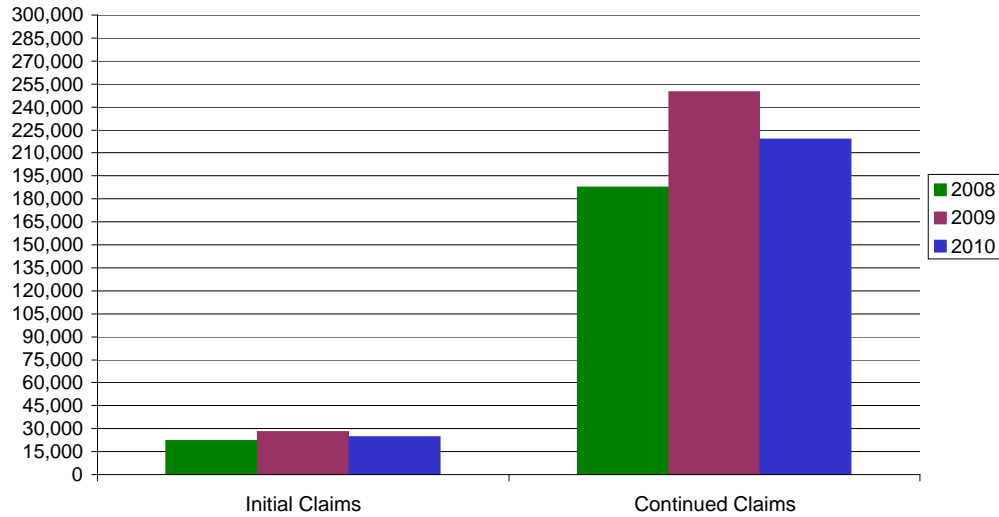
\* Includes UI, EUC08, EB, Workshare & Interstate Liable.

**a product of: Labor Market Information unit**

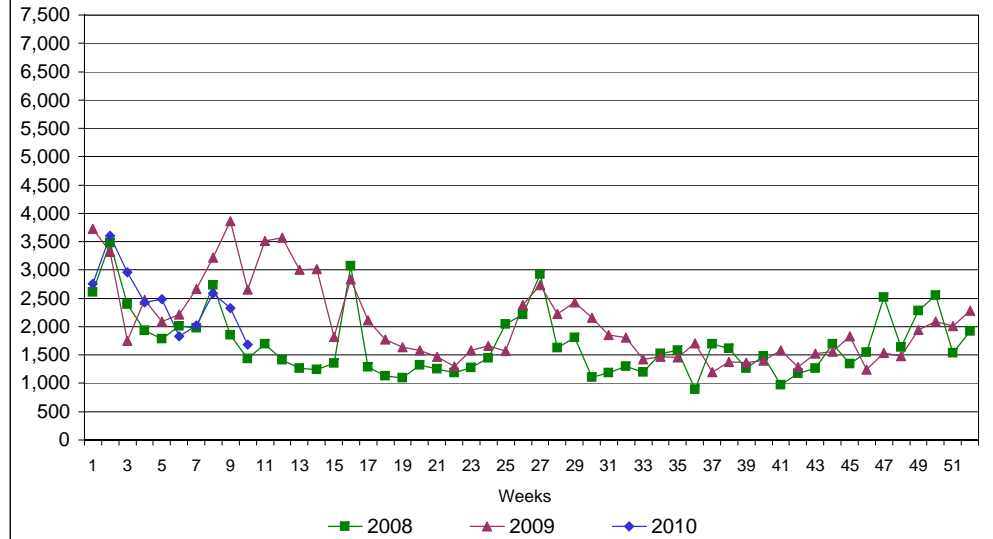
# Rhode Island Department of Labor and Training

## March 6, 2010

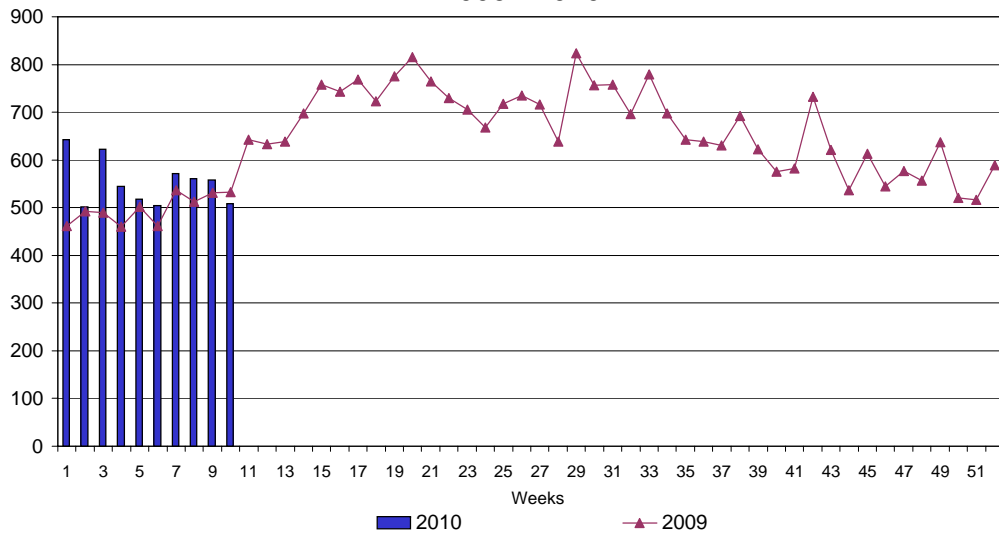
### UI Claims Comparison Year to Date



### UI Initial Claims 2008 - 2010



### UI Exhaustions 2009 - 2010



### TDI Claims Comparison Year to Date

