



Rhode Island Department of Labor and Training

Weekly Update of Claims Activity

Week Ending: March 13, 2010

Unemployment Insurance

Initial Claims – 1,467 initial claims were processed during the week ending 3/13/10, a decrease of 221 from the previous week, and a decrease of 2,043 from a year ago. For the first eleven weeks of the year the number of initial claims filed are running 20.4 percent below last year and 8.6 percent above two years ago.

Continued Claims – 23,344 continued claims were processed during the week of 3/13/10, an increase of 263 from the previous week and a decrease of 4,875 from a year ago. The number of continued claims filed to date is down 14.7 percent from a year ago and up 14.9 percent from two years ago.

Workshare – gives employers an alternative to layoffs by allowing employees to work reduced hours and collect a percentage of regular UI benefits to compensate for lost pay. This week, 223 initial claims and 2,516 continued claims were processed. An estimated 49 layoffs were prevented this week, as a result of Workshare.

Emergency Unemployment Compensation 08 – EUC08, which became effective July 6, 2008, provides up to 53 weeks of federally funded benefits to eligible individuals who exhausted their UI claims. This week there were 883 new EUC08 claims processed and 20,214 continued claims processed (6,882 under tier I, 5,170 under tier II, 5,101 under tier III and 3,061 under tier IV).

Extended Benefits – are payable to individuals who have exhausted EUC08 claims. This week, 57 new EB claims and 578 continued EB claims were processed.

Exhaustions – 627 individuals exhausted their regular payments this week, an increase of 118 from the previous week and a decrease 15 from a year ago. There were 250 individuals that exhausted EUC08 and 90 individuals that exhausted EB.

Temporary Disability Insurance

Temporary Disability Insurance – 898 initial claims and 7,589 continued claims were processed for Temporary Disability Insurance. The average weekly TDI payment is \$436 per week. Rhode Island is currently paying an average of 10.8 weeks per new claim.

	Initial Claims	New Claims	Additional Claims	Continued Claims	Current Week	Previous Week	Year Ago	Two Years Ago
Total - All programs*	2,908	2,057	851	47,396	50,304	49,430	50,008	22,497
UI Claims	1,467	1,047	420	23,344	24,811	24,769	31,729	20,251
Change from:								
Previous Week	-221	252	-473	263	42			
Year Ago	-2,043	-1,415	-628	-4,875	-6,918			
Two Years Ago	-227	-101	-126	4,787	4,560			
EUC08 Claims	1,103	883	220	20,214	21,317	20,205	11,250	
Extended Benefits	73	57	16	578	651	699	465	
UI Exhaustions	-	-	-	627	627	509	642	365
EUC08 Exhaustions	-	-	-	250	250	377	228	-
EB Exhaustions	-	-	-	90	90	116	12	-
Workshare	223	45	178	2,516	2,739	2,954	5,592	1,230
Workshare Equivalency	49	11	38	638	687	729	1,580	339
Interstate-Liable	42	25	17	744	786	803	972	1,016
TDI Claims	898	714	184	7,589	8,487	8,434	10,214	11,564
Change from:								
Previous Week	170	115	55	-117	53			
Year Ago	-2	-8	6	-1,725	-1,727			

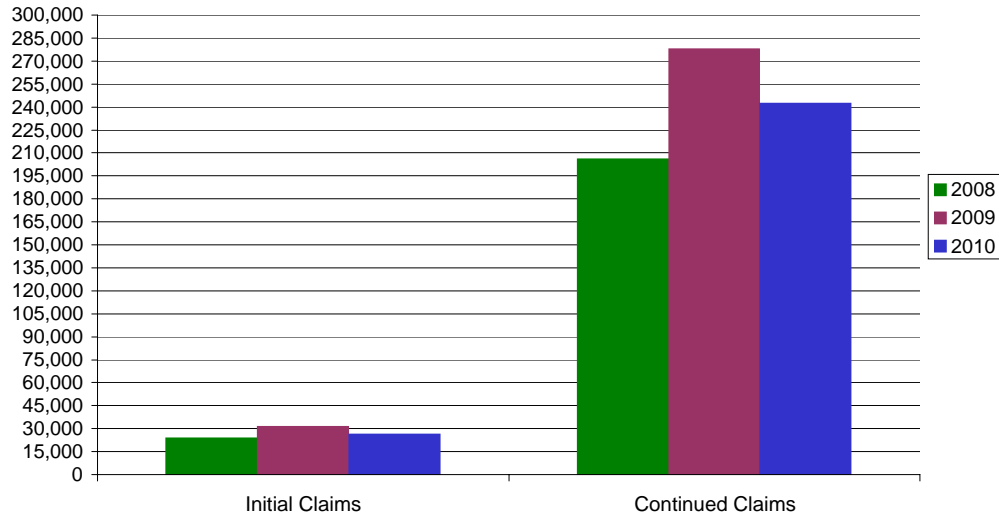
* Includes UI, EUC08, EB, Workshare & Interstate Liable.

a product of: Labor Market Information unit

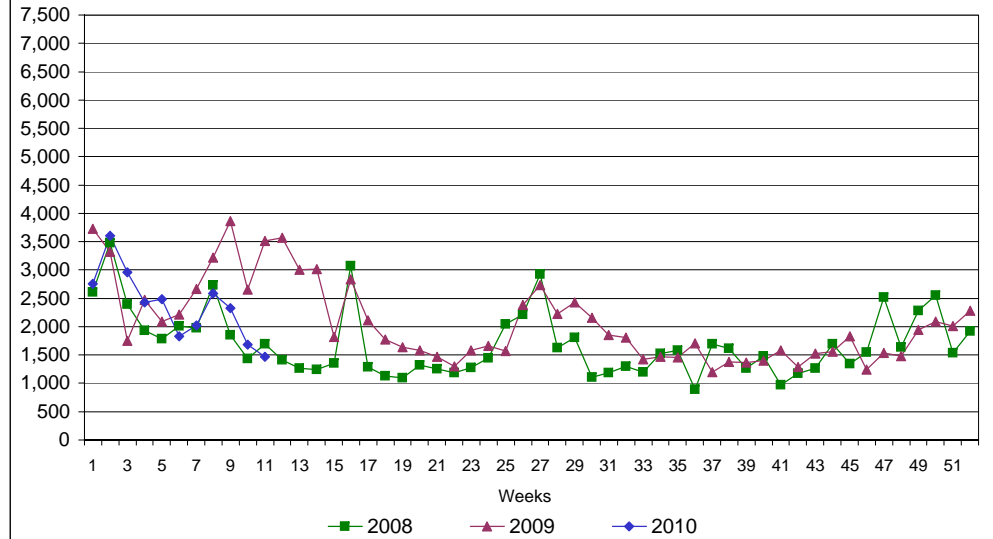
Rhode Island Department of Labor and Training

March 13, 2010

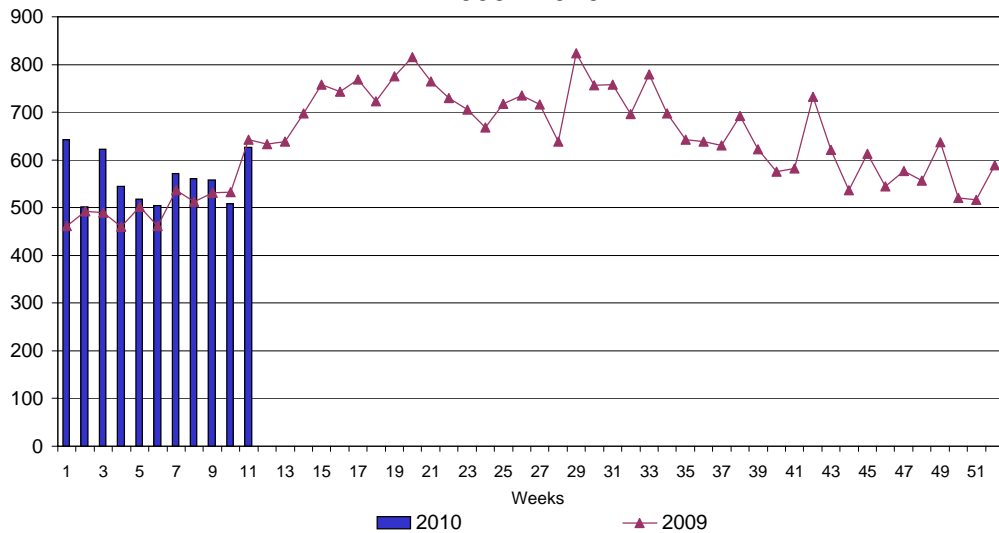
UI Claims Comparison Year to Date



UI Initial Claims 2008 - 2010



UI Exhaustions 2009 - 2010



TDI Claims Comparison Year to Date

