



## *Rhode Island Department of Labor and Training*

# *Weekly Update of Claims Activity*

*Week Ending: March 20, 2010*

### ***Unemployment Insurance***

**Initial Claims** – 1,525 initial claims were processed during the week ending 3/20/10, an increase of 58 from the previous week, and a decrease of 2,039 from a year ago. For the first twelve weeks of the year the number of initial claims filed are running 26.6 percent below last year and 8.6 percent above two years ago.

**Continued Claims** – 22,563 continued claims were processed during the week of 3/20/10, a decrease of 781 from the previous week and a decrease of 9,761 from a year ago. The number of continued claims filed to date is down 17.2 percent from a year ago and up 15.4 percent from two years ago.

**Workshare** – gives employers an alternative to layoffs by allowing employees to work reduced hours and collect a percentage of regular UI benefits to compensate for lost pay. This week, 264 initial claims and 2,516 continued claims were processed. An estimated 71 layoffs were prevented this week, as a result of Workshare.

**Emergency Unemployment Compensation 08** – EUC08, which became effective July 6, 2008, provides up to 53 weeks of federally funded benefits to eligible individuals who exhausted their UI claims. This week there were 794 new EUC08 claims processed and 20,694 continued claims processed (6,961 under tier I, 5,073 under tier II, 5,059 under tier III and 3,601 under tier IV).

**Extended Benefits** – are payable to individuals who have exhausted EUC08 claims. This week, 103 new EB claims and 574 continued EB claims were processed.

**Exhaustions** – 620 individuals exhausted their regular payments this week, a decrease of 7 from the previous week and a decrease 13 from a year ago. There were 232 individuals that exhausted EUC08 and 131 individuals that exhausted EB.

### ***Temporary Disability Insurance***

**Temporary Disability Insurance** – 737 initial claims and 7,702 continued claims were processed for Temporary Disability Insurance. The average weekly TDI payment is \$430 per week. Rhode Island is currently paying an average of 10.8 weeks per new claim.

	Initial Claims	New Claims	Additional Claims	Continued Claims	Current Week	Previous Week	Year Ago	Two Years Ago
<b>Total - All programs*</b>	2,944	1,935	1,009	47,009	49,953	50,304	54,263	21,962
<b>UI Claims</b>	1,525	901	624	22,563	24,088	24,811	35,888	19,483
Change from:								
Previous Week	58	-146	204	-781	-723			
Year Ago	-2,039	-1,330	-709	-9,761	-11,800			
Two Years Ago	110	-3	113	4,495	4,605			
<b>EUC08 Claims</b>	1,004	794	210	20,694	21,698	21,317	12,089	
<b>Extended Benefits</b>	123	103	20	574	697	651	608	
<b>UI Exhaustions</b>	-	-	-	620	620	627	633	400
<b>EUC08 Exhaustions</b>	-	-	-	232	232	250	262	-
<b>EB Exhaustions</b>	-	-	-	131	131	90	43	-
<b>Workshare</b>	264	120	144	2,516	2,780	2,739	4,588	1,472
<b>Workshare Equivalency</b>	71	36	35	654	725	687	1,362	391
<b>Interstate-Liable</b>	28	17	11	662	690	786	1,090	1,007
<b>TDI Claims</b>	737	610	127	7,702	8,439	8,487	9,078	10,246
Change from:								
Previous Week	-161	-104	-57	113	-48			
Year Ago	-251	-188	-63	-388	-639			

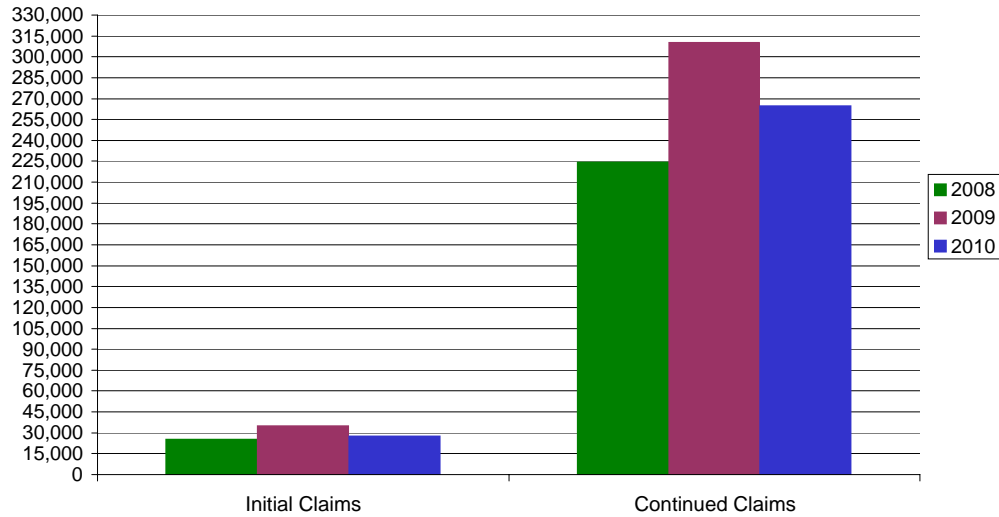
\* Includes UI, EUC08, EB, Workshare & Interstate Liable.

**a product of: Labor Market Information unit**

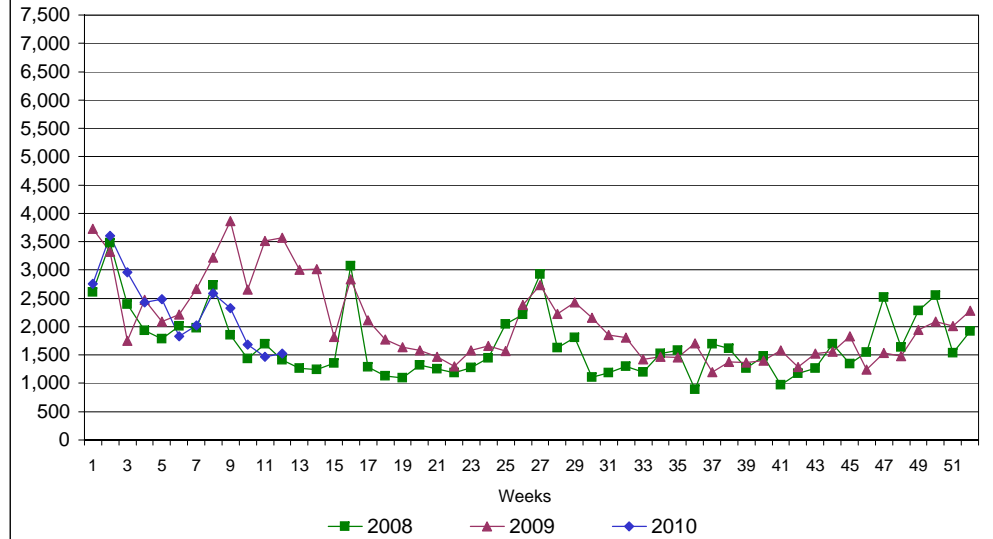
# Rhode Island Department of Labor and Training

## March 20, 2010

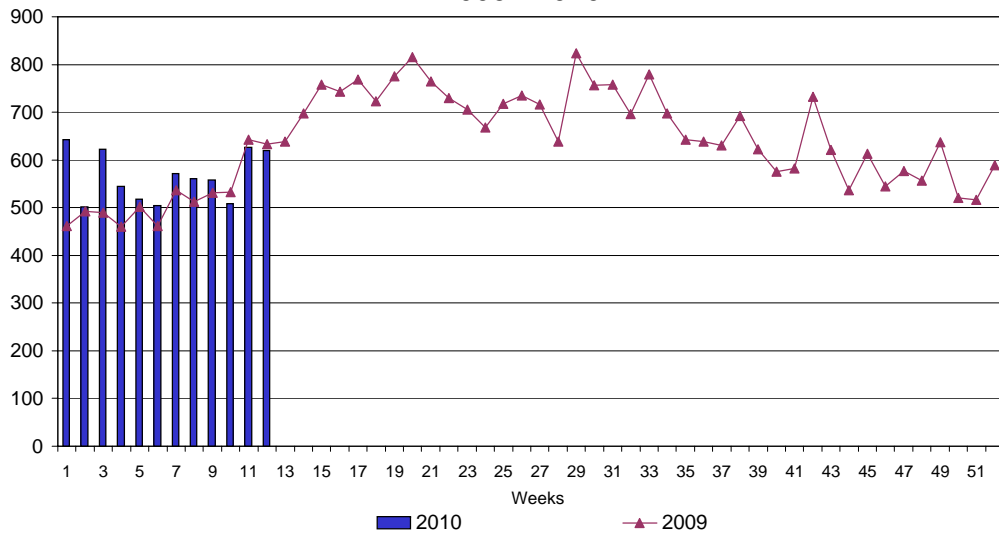
### UI Claims Comparison Year to Date



### UI Initial Claims 2008 - 2010



### UI Exhaustions 2009 - 2010



### TDI Claims Comparison Year to Date

