



Rhode Island Department of Labor and Training

Weekly Update of Claims Activity

Week Ending: March 27, 2010

Unemployment Insurance

Initial Claims – 1,728 initial claims were processed during the week ending 3/27/10, an increase of 203 from the previous week, and a decrease of 1,278 from a year ago. The number of initial claims filed to date is down 29.4 percent below last year and up 9.6 percent from two years ago.

Continued Claims – 22,094 continued claims were processed during the week of 3/27/10, a decrease of 469 from the previous week and a decrease of 11,206 from a year ago. The number of continued claims filed to date is down 19.8 percent from a year ago and up 15.8 percent from two years ago.

Workshare – gives employers an alternative to layoffs by allowing employees to work reduced hours and collect a percentage of regular UI benefits to compensate for lost pay. This week, 201 initial claims and 2,580 continued claims were processed. An estimated 42 layoffs were prevented this week, as a result of Workshare.

Emergency Unemployment Compensation 08 – EUC08, which became effective July 6, 2008, provides up to 53 weeks of federally funded benefits to eligible individuals who exhausted their UI claims. This week there were 634 new EUC08 claims processed and 20,534 continued claims processed (6,710 under tier I, 5,063 under tier II, 5,139 under tier III and 3,622 under tier IV).

Extended Benefits – are payable to individuals who have exhausted EUC08 claims. This week, 66 new EB claims and 480 continued EB claims were processed.

Exhaustions – 595 individuals exhausted their regular payments this week, a decrease of 25 from the previous week and a decrease 43 from a year ago. There were 341 individuals that exhausted EUC08 and 103 individuals that exhausted EB.

Temporary Disability Insurance

Temporary Disability Insurance – 721 initial claims and 7,465 continued claims were processed for Temporary Disability Insurance. The average weekly TDI payment is \$424 per week. Rhode Island is currently paying an average of 10.8 weeks per new claim.

	Initial Claims	New Claims	Additional Claims	Continued Claims	Current Week	Previous Week	Year Ago	Two Years Ago
Total - All programs*	2,872	1,930	942	46,416	49,288	49,953	55,452	20,958
UI Claims	1,728	1,096	632	22,094	23,822	24,088	36,306	18,828
Change from:								
Previous Week	203	195	8	-469	-266			
Year Ago	-1,278	-759	-519	-11,206	-12,484			
Two Years Ago	460	264	196	4,534	4,994			
EUC08 Claims	812	634	178	20,534	21,346	21,698	12,211	
Extended Benefits	79	66	13	480	559	697	783	
UI Exhaustions	-	-	-	595	595	620	638	384
EUC08 Exhaustions	-	-	-	341	341	232	108	-
EB Exhaustions	-	-	-	103	103	131	36	-
Workshare	201	101	100	2,580	2,781	2,780	5,076	1,149
Workshare Equivalency	42	21	21	639	681	725	1,342	324
Interstate-Liable	52	33	19	728	780	690	1,076	981
TDI Claims	721	597	124	7,465	8,186	8,439	8,371	10,261
Change from:								
Previous Week	-16	-13	-3	-237	-253			
Year Ago	-94	-64	-30	-91	-185			

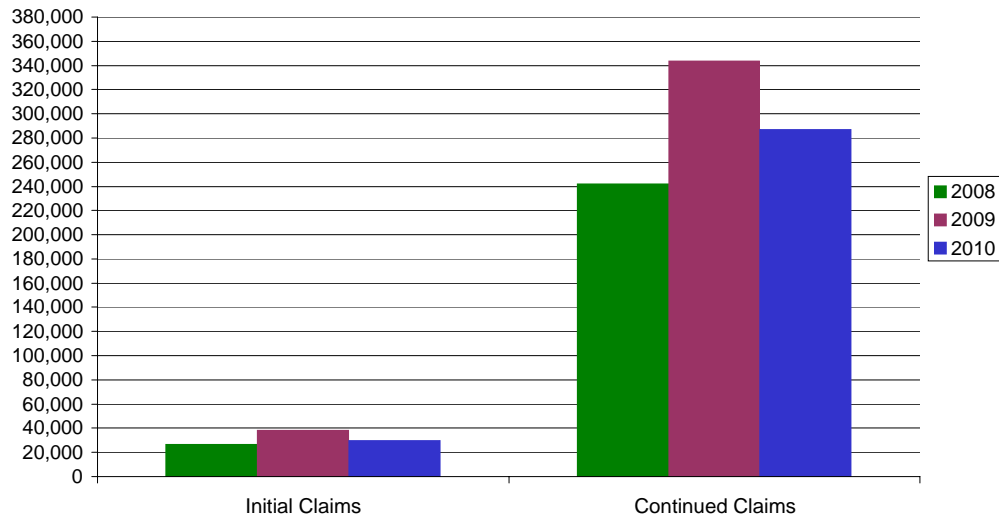
* Includes UI, EUC08, EB, Workshare & Interstate Liable.

a product of: Labor Market Information unit

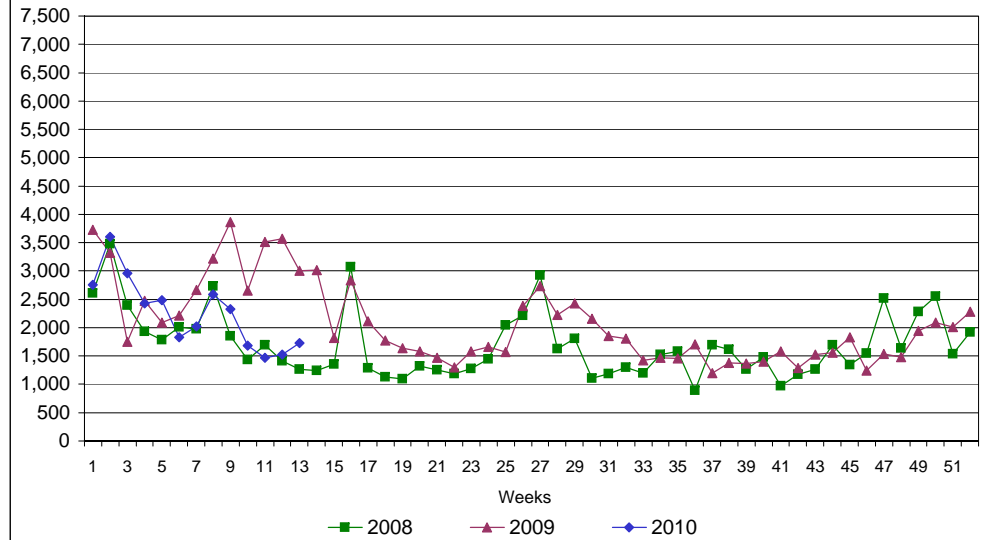
Rhode Island Department of Labor and Training

March 27, 2010

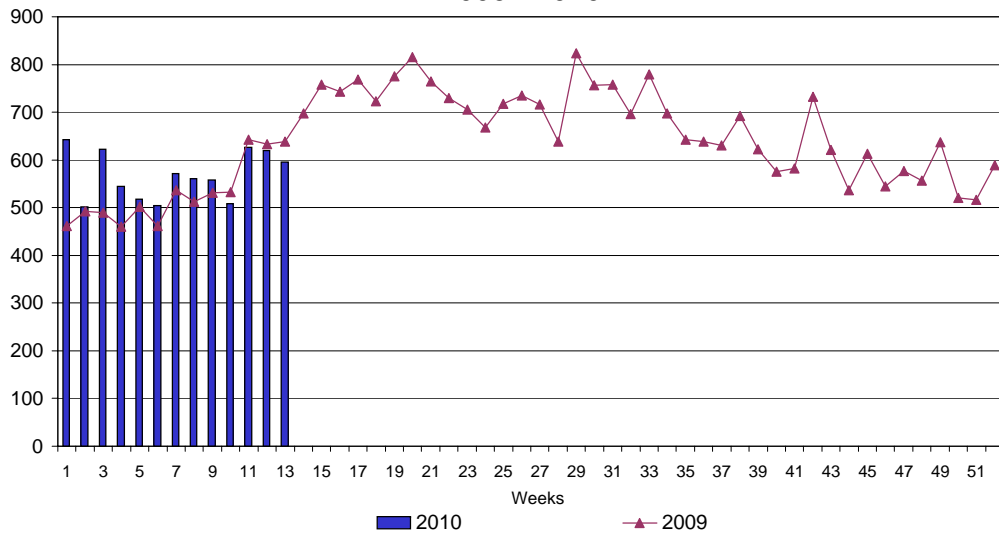
UI Claims Comparison Year to Date



UI Initial Claims 2008 - 2010



UI Exhaustions 2009 - 2010



TDI Claims Comparison Year to Date

