



Rhode Island Department of Labor and Training

Weekly Update of Claims Activity

Week Ending: April 17, 2010

Unemployment Insurance

Initial Claims – 2,004 initial claims were processed during the week ending 4/17/10, a decrease of 179 from the previous week, and a decrease of 829 from a year ago. Due to the March flood nearly a hundred companies have temporarily closed due to flood damage. The increase in initial claims is attributed to the filing of their employees. The number of initial claims filed to date is down 31.5 percent below last year and up 7.2 percent from two years ago.

Continued Claims – 18,177 continued claims were processed during the week of 4/17/10, a decrease of 1,480 from the previous week and a decrease of 7,121 from a year ago. The number of continued claims filed to date is down 23.4 percent from a year ago and up 16.1 percent from two years ago.

Workshare – gives employers an alternative to layoffs by allowing employees to work reduced hours and collect a percentage of regular UI benefits to compensate for lost pay. This week, 466 initial claims and 3,597 continued claims were processed. An estimated 110 layoffs were prevented this week, as a result of Workshare.

Emergency Unemployment Compensation 08 – EUC08, which became effective July 6, 2008, provides up to 53 weeks of federally funded benefits to eligible individuals who exhausted their UI claims. This week there were 88 new EUC08 claims processed and 17,875 continued claims processed (6,064 under tier I, 4,327 under tier II, 5,005 under tier III and 2,479 under tier IV).

Extended Benefits – are payable to individuals who have exhausted EUC08 claims. This week, 587 new EB claims and 786 continued EB claims were processed.

Exhaustions – 691 individuals exhausted their regular payments this week, an increase of 19 from the previous week and a decrease 52 from a year ago. There were 526 individuals that exhausted EUC08 and 19 individuals that exhausted EB.

Temporary Disability Insurance

Temporary Disability Insurance – 932 initial claims and 6,749 continued claims were processed for Temporary Disability Insurance. The average weekly TDI payment is \$433 per week. Rhode Island is currently paying an average of 10.7 weeks per new claim.

	Initial Claims	New Claims	Additional Claims	Continued Claims	Current Week	Previous Week	Year Ago	Two Years Ago
Total - All programs*	3,322	2,275	1,047	41,008	44,330	44,842	47,632	20,851
UI Claims	2,004	1,439	565	18,177	20,181	21,840	28,131	18,116
Change from:								
Previous Week	-179	-32	-147	-1,480	-1,659			
Year Ago	-829	200	-1,029	-7,121	-7,950			
Two Years Ago	-1,067	320	-1,387	3,132	2,065			
EUC08 Claims	238	88	150	17,875	18,113	19,452	11,644	
Extended Benefits	592	587	5	786	1,378	878	1,057	
UI Exhaustions	-	-	-	691	691	672	743	400
EUC08 Exhaustions	-	-	-	526	526	617	1,852	-
EB Exhaustions	-	-	-	19	19	28	26	-
Workshare	466	150	316	3,597	4,063	1,985	5,822	1,887
Workshare Equivalency	110	42	68	880	990	474	1,535	463
Interstate-Liable	22	11	11	573	595	687	978	848
TDI Claims	932	780	152	6,749	7,681	8,435	9,231	9,435
Change from:								
Previous Week	-12	-10	-2	-742	-754			
Year Ago	57	85	-28	-1,607	-1,550			

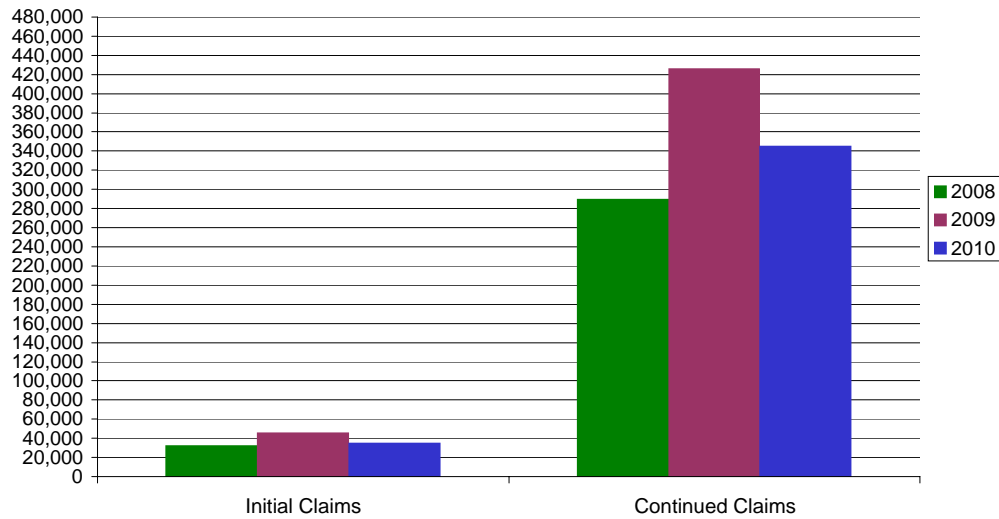
* Includes UI, EUC08, EB, Workshare & Interstate Liable.

a product of: Labor Market Information unit

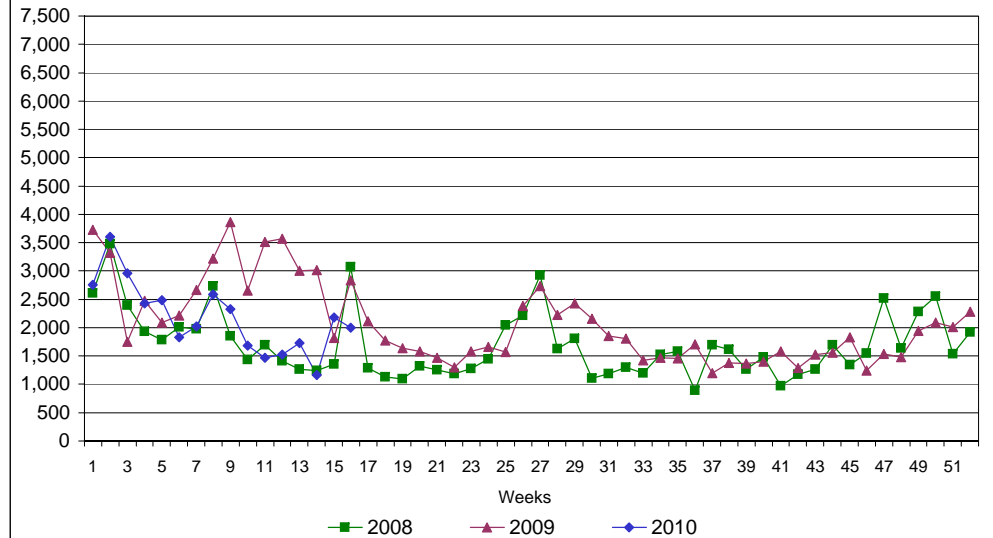
Rhode Island Department of Labor and Training

April 17, 2010

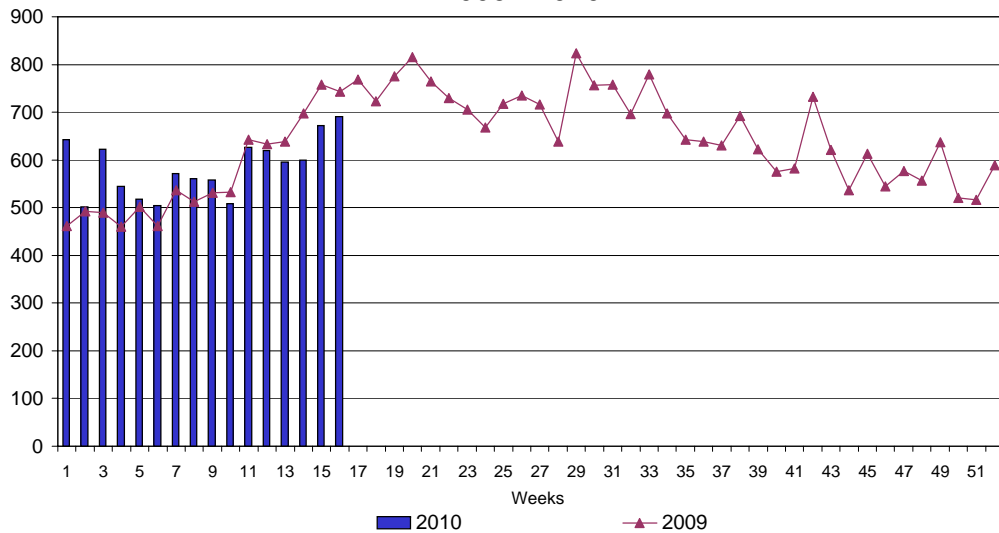
UI Claims Comparison Year to Date



UI Initial Claims 2008 - 2010



UI Exhaustions 2009 - 2010



TDI Claims Comparison Year to Date

