



## Rhode Island Department of Labor and Training

# *Weekly Update of Claims Activity*

*Week Ending: April 24, 2010*

### ***Unemployment Insurance***

**Initial Claims** – 2,269 initial claims were processed during the week ending 4/24/10, an increase of 265 from the previous week, and an increase of 157 from a year ago. The number of initial claims filed to date is down 29.2 percent below last year and up 9.4 percent from two years ago.

**Continued Claims** – 18,382 continued claims were processed during the week of 4/24/10, an increase of 205 from the previous week and a decrease of 8,357 from a year ago. The number of continued claims filed to date is down 24.5 percent from a year ago and up 15.8 percent from two years ago.

**Workshare** – gives employers an alternative to layoffs by allowing employees to work reduced hours and collect a percentage of regular UI benefits to compensate for lost pay. This week, 393 initial claims and 3,020 continued claims were processed. An estimated 90 layoffs were prevented this week, as a result of Workshare.

**Emergency Unemployment Compensation 08** – EUC08, which became effective July 6, 2008, provides up to 53 weeks of federally funded benefits to eligible individuals who exhausted their UI claims. This week there were 858 new EUC08 claims processed and 17,168 continued claims processed (5,868 under tier I, 4,328 under tier II, 4,857 under tier III and 2,115 under tier IV).

**Extended Benefits** – are payable to individuals who have exhausted EUC08 claims. This week, 120 new EB claims and 1,206 continued EB claims were processed.

**Exhaustions** – 630 individuals exhausted their regular payments this week, a decrease of 61 from the previous week and a decrease 139 from a year ago. There were 459 individuals that exhausted EUC08 and 25 individuals that exhausted EB.

### ***Temporary Disability Insurance***

**Temporary Disability Insurance** – 923 initial claims and 7,196 continued claims were processed for Temporary Disability Insurance. The average weekly TDI payment is \$437 per week. Rhode Island is currently paying an average of 10.6 weeks per new claim.

	Initial Claims	New Claims	Additional Claims	Continued Claims	Current Week	Previous Week	Year Ago	Two Years Ago
<b>Total - All programs*</b>	3,871	2,302	1,569	40,313	44,184	44,330	46,831	19,223
<b>UI Claims</b>	2,269	1,209	1,060	18,382	20,651	20,181	28,851	17,483
Change from:								
Previous Week	265	-230	495	205	470			
Year Ago	157	169	-12	-8,357	-8,200			
Two Years Ago	978	414	564	2,190	3,168			
<b>EUC08 Claims</b>	1,052	858	194	17,168	18,220	18,113	10,363	
<b>Extended Benefits</b>	132	120	12	1,206	1,338	1,378	1,725	
<b>UI Exhaustions</b>	-	-	-	630	630	691	769	414
<b>EUC08 Exhaustions</b>	-	-	-	459	459	526	548	-
<b>EB Exhaustions</b>	-	-	-	25	25	19	48	-
<b>Workshare</b>	393	103	290	3,020	3,413	4,063	4,949	861
<b>Workshare Equivalency</b>	90	25	65	697	787	990	1,352	265
<b>Interstate-Liable</b>	25	12	13	537	562	595	943	879
<b>TDI Claims</b>	923	764	159	7,196	8,119	7,681	8,242	9,674
Change from:								
Previous Week	-9	-16	7	447	438			
Year Ago	107	114	-7	-230	-123			

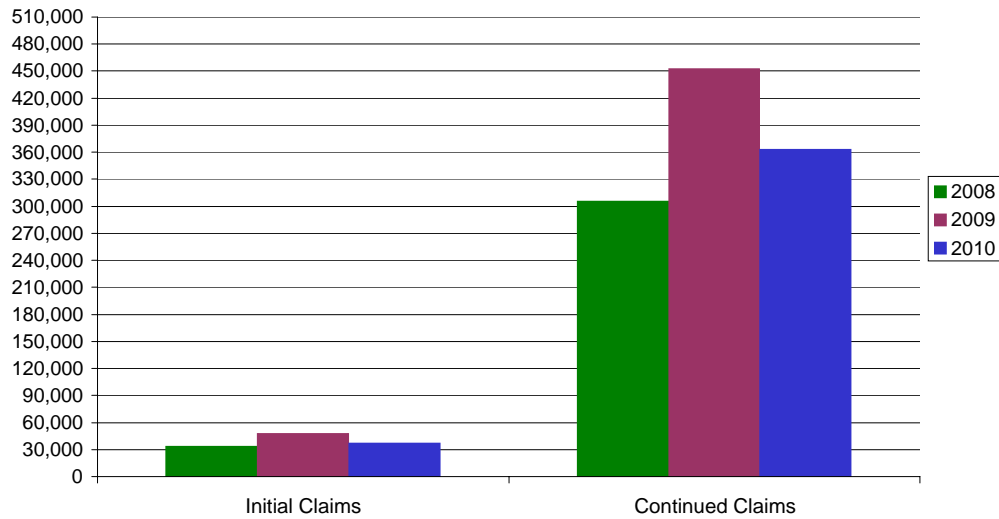
\* Includes UI, EUC08, EB, Workshare & Interstate Liable.

**a product of: Labor Market Information unit**

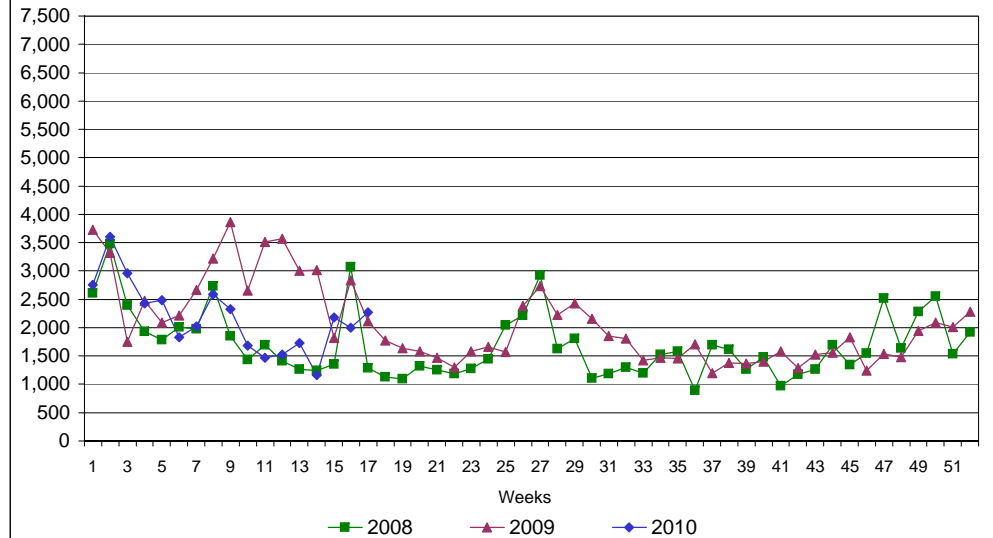
# Rhode Island Department of Labor and Training

## April 24, 2010

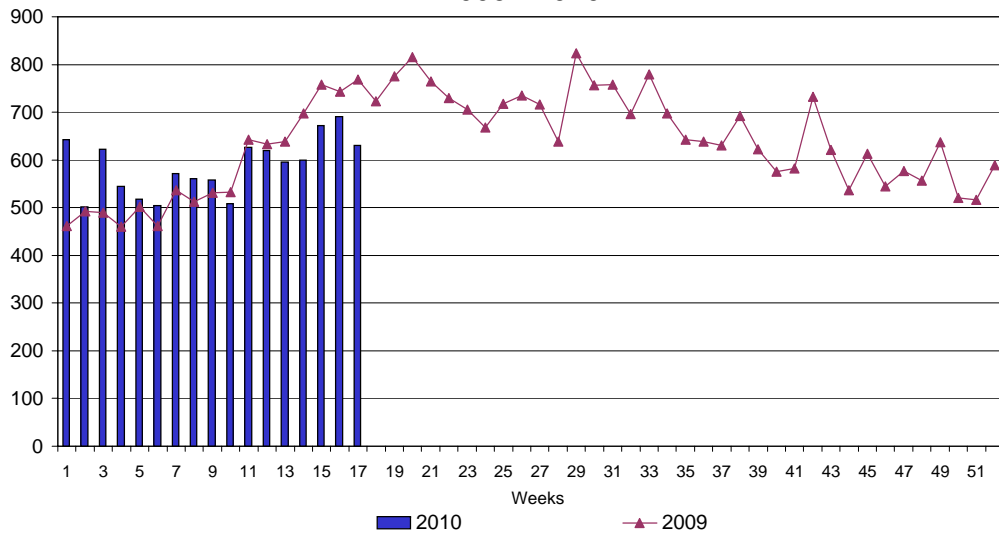
### UI Claims Comparison Year to Date



### UI Initial Claims 2008 - 2010



### UI Exhaustions 2009 - 2010



### TDI Claims Comparison Year to Date

