



Rhode Island Department of Labor and Training

Weekly Update of Claims Activity

Week Ending: May 1, 2010

Unemployment Insurance

Initial Claims – 2,078 initial claims were processed during the week ending 5/1/10, a decrease of 191 from the previous week, and an increase of 304 from a year ago. The number of initial claims filed to date is down 26.9 percent below last year and up 11.3 percent from two years ago.

Continued Claims – 19,283 continued claims were processed during the week of 5/1/10, an increase of 901 from the previous week and a decrease of 4,940 from a year ago. The number of continued claims filed to date is down 24.6 percent from a year ago and up 16.5 percent from two years ago.

Workshare – gives employers an alternative to layoffs by allowing employees to work reduced hours and collect a percentage of regular UI benefits to compensate for lost pay. This week, 201 initial claims and 3,128 continued claims were processed. An estimated 45 layoffs were prevented this week, as a result of Workshare.

Emergency Unemployment Compensation 08 – EUC08, which became effective July 6, 2008, provides up to 53 weeks of federally funded benefits to eligible individuals who exhausted their UI claims. This week there were 651 new EUC08 claims processed and 17,488 continued claims processed (6,279 under tier I, 4,369 under tier II, 4,851 under tier III and 1,989 under tier IV).

Extended Benefits – are payable to individuals who have exhausted EUC08 claims. This week, 157 new EB claims and 859 continued EB claims were processed.

Exhaustions – 636 individuals exhausted their regular payments this week, an increase of 6 from the previous week and a decrease 87 from a year ago. There were 432 individuals that exhausted EUC08 and 20 individuals that exhausted EB.

Temporary Disability Insurance

Temporary Disability Insurance – 791 initial claims and 7,652 continued claims were processed for Temporary Disability Insurance. The average weekly TDI payment is \$426 per week. Rhode Island is currently paying an average of 10.7 weeks per new claim.

	Initial Claims	New Claims	Additional Claims	Continued Claims	Current Week	Previous Week	Year Ago	Two Years Ago
Total - All programs*	3,329	1,879	1,450	41,263	44,592	44,184	46,289	17,449
UI Claims	2,078	1,040	1,038	19,283	21,361	20,651	25,997	14,967
Change from:								
Previous Week	-191	-169	-22	901	710			
Year Ago	304	97	207	-4,940	-4,636			
Two Years Ago	951	312	639	5,443	6,394			
EUC08 Claims	857	651	206	17,488	18,345	18,220	10,197	
Extended Benefits	173	157	16	859	1,032	1,338	2,161	
UI Exhaustions	-	-	-	636	636	630	723	398
EUC08 Exhaustions	-	-	-	432	432	459	250	-
EB Exhaustions	-	-	-	20	20	25	57	-
Workshare	201	16	185	3,128	3,329	3,413	6,954	1,589
Workshare Equivalency	45	4	41	698	743	787	1,869	351
Interstate-Liable	20	15	5	505	525	562	980	893
TDI Claims	791	644	147	7,652	8,443	8,119	8,591	9,425
Change from:								
Previous Week	-132	-120	-12	456	324			
Year Ago	-152	-104	-48	4	-148			

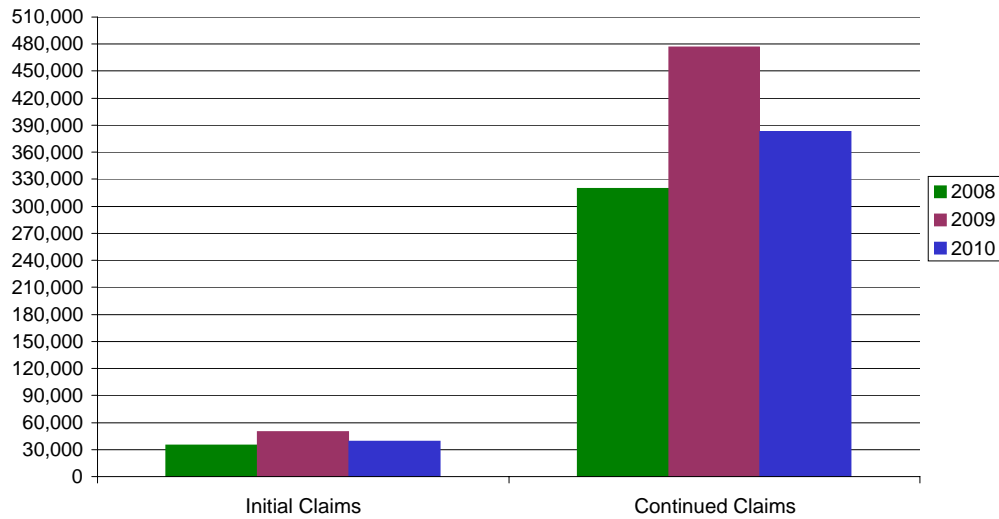
* Includes UI, EUC08, EB, Workshare & Interstate Liable.

a product of: Labor Market Information unit

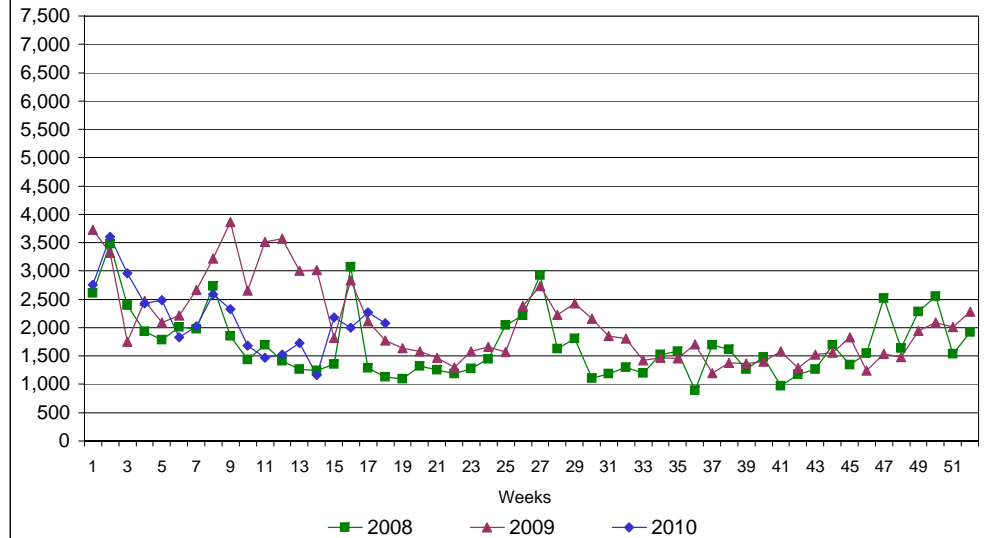
Rhode Island Department of Labor and Training

May 1, 2010

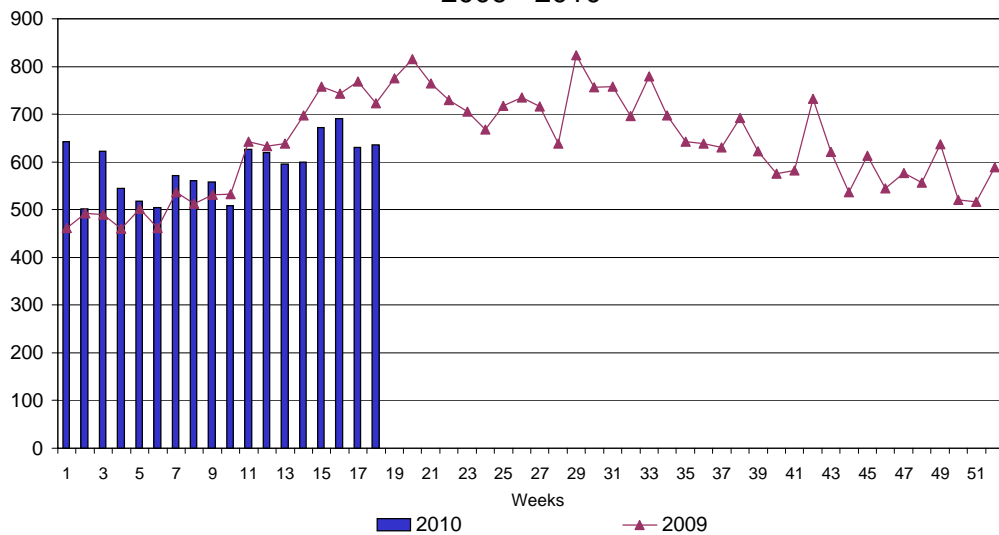
UI Claims Comparison Year to Date



UI Initial Claims 2008 - 2010



UI Exhaustions 2009 - 2010



TDI Claims Comparison Year to Date

