



Rhode Island Department of Labor and Training

Weekly Update of Claims Activity

Week Ending: May 8, 2010

Unemployment Insurance

Initial Claims – 1,719 initial claims were processed during the week ending 5/8/10, a decrease of 359 from the previous week, and an increase of 80 from a year ago. The number of initial claims filed to date is down 25.5 percent below last year and up 12.4 percent from two years ago.

Continued Claims – 18,206 continued claims were processed during the week of 5/8/10, a decrease of 1,077 from the previous week and a decrease of 4,537 from a year ago. The number of continued claims filed to date is down 24.6 percent from a year ago and up 16.9 percent from two years ago.

Workshare – gives employers an alternative to layoffs by allowing employees to work reduced hours and collect a percentage of regular UI benefits to compensate for lost pay. This week, 244 initial claims and 1,831 continued claims were processed. An estimated 54 layoffs were prevented this week, as a result of Workshare.

Emergency Unemployment Compensation 08 – EUC08, which became effective July 6, 2008, provides up to 53 weeks of federally funded benefits to eligible individuals who exhausted their UI claims. This week there were 575 new EUC08 claims processed and 17,553 continued claims processed (6,386 under tier I, 4,370 under tier II, 4,884 under tier III and 1,913 under tier IV).

Extended Benefits – are payable to individuals who have exhausted EUC08 claims. This week, 174 new EB claims and 1,098 continued EB claims were processed.

Exhaustions – 603 individuals exhausted their regular payments this week, a decrease of 33 from the previous week and a decrease 172 from a year ago. There were 377 individuals that exhausted EUC08 and 24 individuals that exhausted EB.

Temporary Disability Insurance

Temporary Disability Insurance – 742 initial claims and 7,697 continued claims were processed for Temporary Disability Insurance. The average weekly TDI payment is \$432 per week. Rhode Island is currently paying an average of 10.7 weeks per new claim.

	Initial Claims	New Claims	Additional Claims	Continued Claims	Current Week	Previous Week	Year Ago	Two Years Ago
Total - All programs*	2,971	1,697	1,274	39,242	42,213	44,592	42,520	16,320
UI Claims	1,719	878	841	18,206	19,925	21,361	24,382	14,520
Change from:								
Previous Week	-359	-162	-197	-1,077	-1,436			
Year Ago	80	-110	190	-4,537	-4,457			
Two Years Ago	624	228	396	4,781	5,405			
EUC08 Claims	794	575	219	17,553	18,347	18,345	10,295	
Extended Benefits	183	174	9	1,098	1,281	1,032	2,222	
UI Exhaustions	-	-	-	603	603	636	775	406
EUC08 Exhaustions	-	-	-	377	377	432	222	-
EB Exhaustions	-	-	-	24	24	20	64	-
Workshare	244	53	191	1,831	2,075	3,329	4,726	954
Workshare Equivalency	54	14	40	449	503	743	1,251	261
Interstate-Liable	31	17	14	554	585	525	895	846
TDI Claims	742	601	141	7,697	8,439	8,443	8,088	10,022
Change from:								
Previous Week	-49	-43	-6	45	-4			
Year Ago	5	-11	16	346	351			

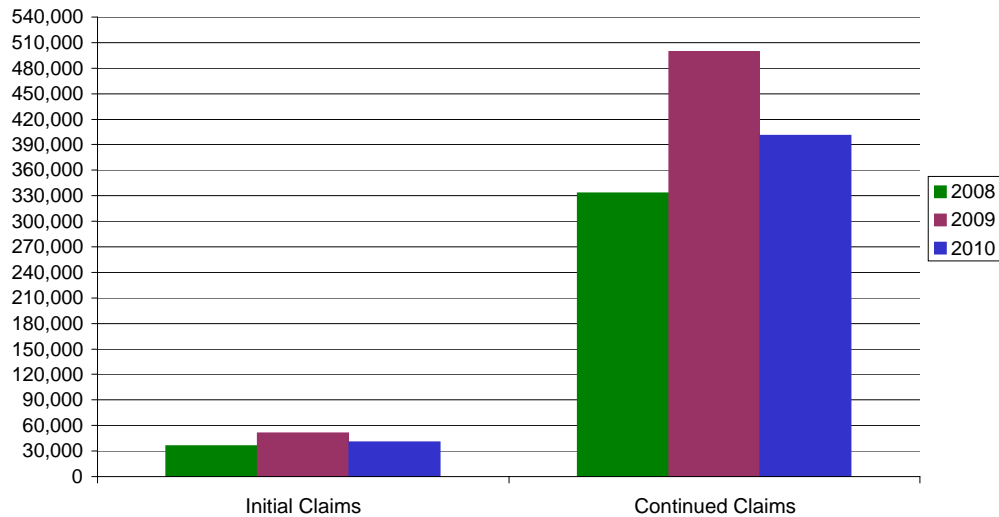
* Includes UI, EUC08, EB, Workshare & Interstate Liable.

a product of: Labor Market Information unit

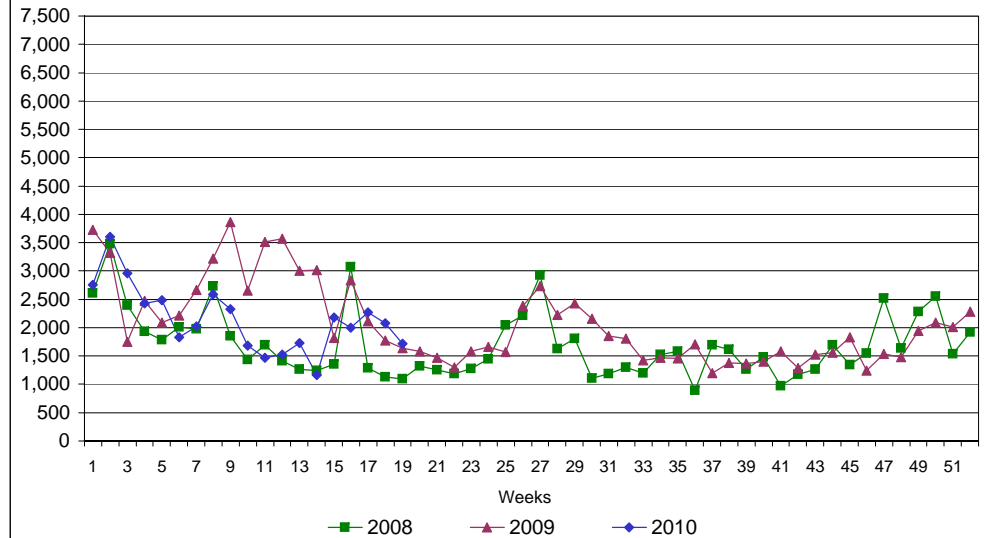
Rhode Island Department of Labor and Training

May 8, 2010

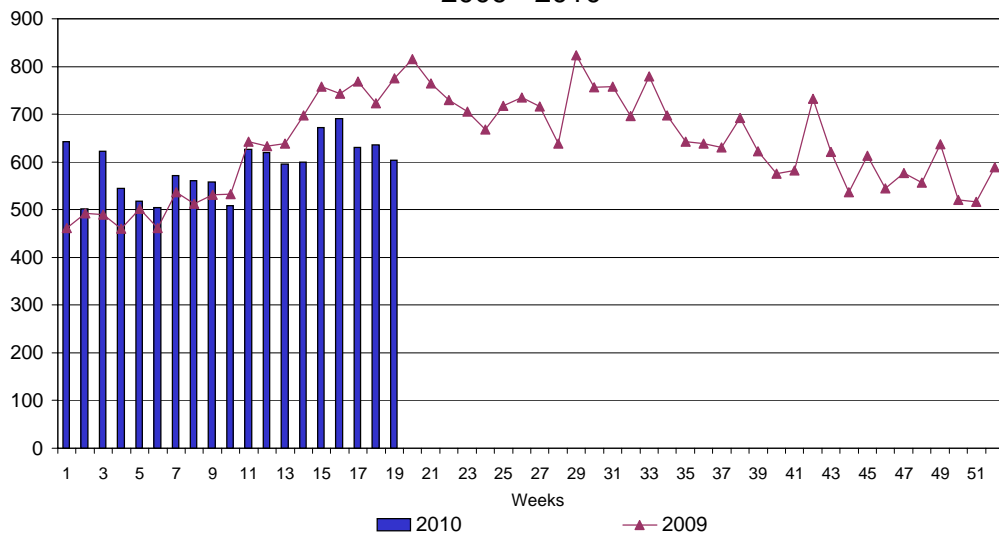
UI Claims Comparison Year to Date



UI Initial Claims 2008 - 2010



UI Exhaustions 2009 - 2010



TDI Claims Comparison Year to Date

