



Rhode Island Department of Labor and Training

Weekly Update of Claims Activity

Week Ending: May 15, 2010

Unemployment Insurance

Initial Claims – 1,491 initial claims were processed during the week ending 5/15/10, a decrease of 228 from the previous week, and a decrease of 88 from a year ago. The number of initial claims filed to date is down 24.8 percent below last year and up 12.4 percent from two years ago.

Continued Claims – 17,116 continued claims were processed during the week of 5/15/10, a decrease of 1,090 from the previous week and a decrease of 5,062 from a year ago. The number of continued claims filed to date is down 24.8 percent from a year ago and up 17.2 percent from two years ago.

Workshare – gives employers an alternative to layoffs by allowing employees to work reduced hours and collect a percentage of regular UI benefits to compensate for lost pay. This week, 267 initial claims and 2,666 continued claims were processed. An estimated 75 layoffs were prevented this week, as a result of Workshare.

Emergency Unemployment Compensation 08 – EUC08, which became effective July 6, 2008, provides up to 53 weeks of federally funded benefits to eligible individuals who exhausted their UI claims. This week there were 624 new EUC08 claims processed and 17,212 continued claims processed (6,296 under tier I, 4,340 under tier II, 4,759 under tier III and 1,817 under tier IV).

Extended Benefits – are payable to individuals who have exhausted EUC08 claims. This week, 198 new EB claims and 1,163 continued EB claims were processed.

Exhaustions – 586 individuals exhausted their regular payments this week, a decrease of 17 from the previous week and a decrease 229 from a year ago. There were 336 individuals that exhausted EUC08 and 18 individuals that exhausted EB.

Temporary Disability Insurance

Temporary Disability Insurance – 830 initial claims and 7,796 continued claims were processed for Temporary Disability Insurance. The average weekly TDI payment is \$434 per week. Rhode Island is currently paying an average of 10.7 weeks per new claim.

	Initial Claims	New Claims	Additional Claims	Continued Claims	Current Week	Previous Week	Year Ago	Two Years Ago
Total - All programs*	2,869	1,765	1,104	38,688	41,557	42,213	43,316	17,264
UI Claims	1,491	903	588	17,116	18,607	19,925	23,757	14,375
Change from:								
Previous Week	-228	25	-253	-1,090	-1,318			
Year Ago	-88	21	-109	-5,062	-5,150			
Two Years Ago	165	83	82	4,067	4,232			
EUC08 Claims	868	624	244	17,212	18,080	18,347	10,852	
Extended Benefits	208	198	10	1,163	1,371	1,281	2,426	
UI Exhaustions	-	-	-	586	586	603	815	367
EUC08 Exhaustions	-	-	-	336	336	377	219	-
EB Exhaustions	-	-	-	18	18	24	44	-
Workshare	267	17	250	2,666	2,933	2,075	5,434	2,075
Workshare Equivalency	75	10	65	648	723	503	1,412	468
Interstate-Liable	35	23	12	531	566	585	847	814
TDI Claims	830	678	152	7,796	8,626	8,439	8,650	9,897
Change from:								
Previous Week	88	77	11	99	187			
Year Ago	-123	-119	-4	99	-24			

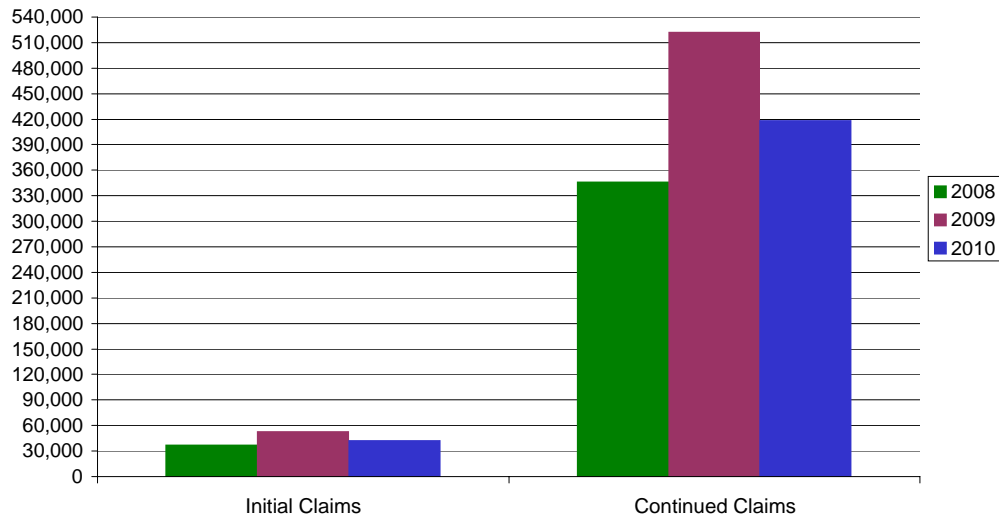
* Includes UI, EUC08, EB, Workshare & Interstate Liable.

a product of: Labor Market Information unit

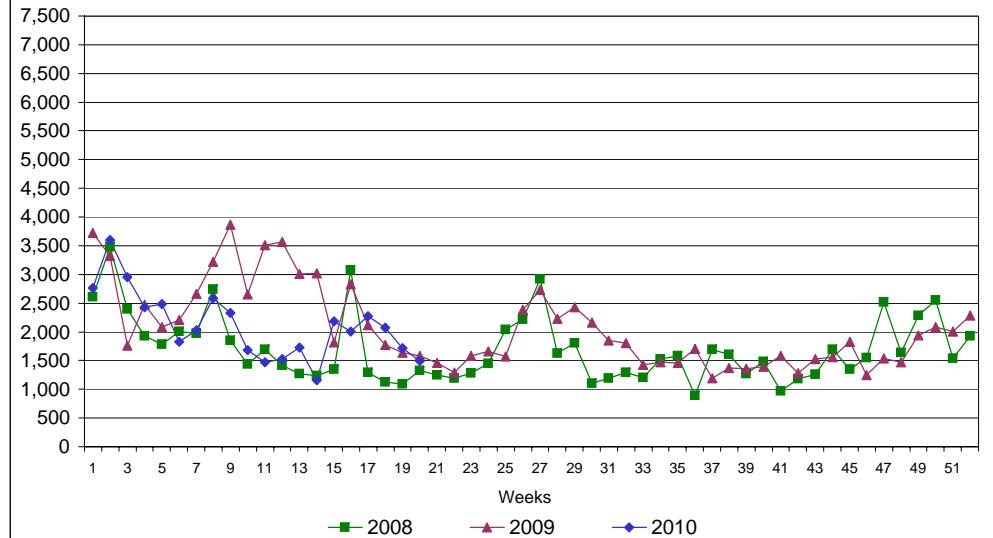
Rhode Island Department of Labor and Training

May 15, 2010

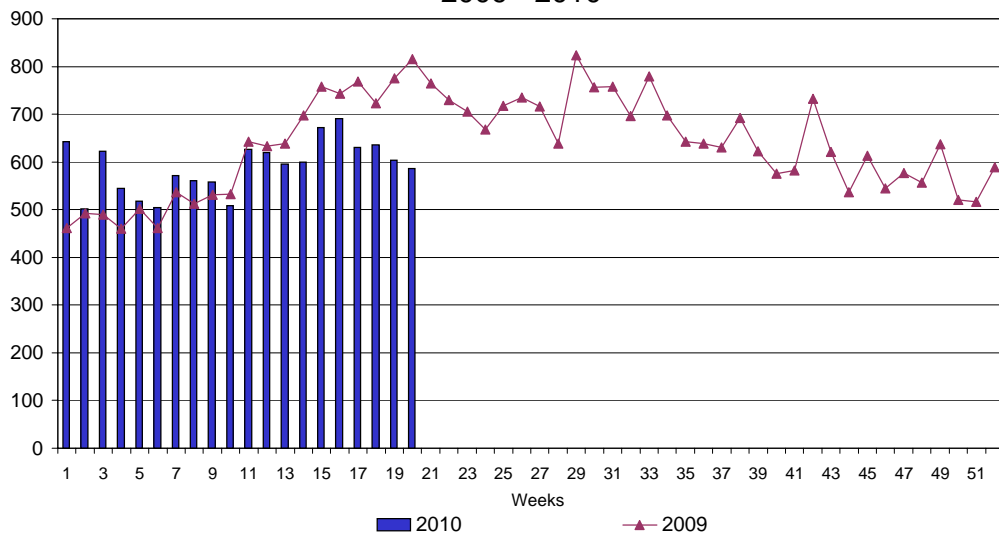
UI Claims Comparison Year to Date



UI Initial Claims 2008 - 2010



UI Exhaustions 2009 - 2010



TDI Claims Comparison Year to Date

