



## Rhode Island Department of Labor and Training

# *Weekly Update of Claims Activity*

*Week Ending: May 22, 2010*

### ***Unemployment Insurance***

**Initial Claims** – 1,817 initial claims were processed during the week ending 5/22/10, an increase of 326 from the previous week, and an increase of 353 from a year ago. The number of initial claims filed to date is down 23.0 percent below last year and up 13.1 percent from two years ago.

**Continued Claims** – 16,749 continued claims were processed during the week of 5/22/10, a decrease of 367 from the previous week and a decrease of 4,622 from a year ago. The number of continued claims filed to date is down 24.9 percent from a year ago and up 17.4 percent from two years ago.

**Workshare** – gives employers an alternative to layoffs by allowing employees to work reduced hours and collect a percentage of regular UI benefits to compensate for lost pay. This week, 244 initial claims and 2,413 continued claims were processed. An estimated 60 layoffs were prevented this week, as a result of Workshare.

**Emergency Unemployment Compensation 08** – EUC08, which became effective July 6, 2008, provides up to 53 weeks of federally funded benefits to eligible individuals who exhausted their UI claims. This week there were 737 new EUC08 claims processed and 17,138 continued claims processed (6,302 under tier I, 4,303 under tier II, 4,667 under tier III and 1,866 under tier IV).

**Extended Benefits** – are payable to individuals who have exhausted EUC08 claims. This week, 211 new EB claims and 1,322 continued EB claims were processed.

**Exhaustions** – 588 individuals exhausted their regular payments this week, an increase of 2 from the previous week and a decrease 177 from a year ago. There were 369 individuals that exhausted EUC08 and 32 individuals that exhausted EB.

### ***Temporary Disability Insurance***

**Temporary Disability Insurance** – 790 initial claims and 7,559 continued claims were processed for Temporary Disability Insurance. The average weekly TDI payment is \$428 per week. Rhode Island is currently paying an average of 10.7 weeks per new claim.

	Initial Claims	New Claims	Additional Claims	Continued Claims	Current Week	Previous Week	Year Ago	Two Years Ago
<b>Total - All programs*</b>	3,390	2,116	1,274	38,088	41,478	41,557	42,804	16,192
<b>UI Claims</b>	1,817	1,088	729	16,749	18,566	18,607	22,835	14,221
Change from:								
Previous Week	326	185	141	-367	-41			
Year Ago	353	227	126	-4,622	-4,269			
Two Years Ago	564	338	226	3,781	4,345			
<b>EUC08 Claims</b>	1,052	737	315	17,138	18,190	18,080	10,748	
<b>Extended Benefits</b>	226	211	15	1,322	1,548	1,371	3,006	
<b>UI Exhaustions</b>	-	-	-	588	588	586	765	366
<b>EUC08 Exhaustions</b>	-	-	-	369	369	336	198	-
<b>EB Exhaustions</b>	-	-	-	32	32	18	48	-
<b>Workshare</b>	244	54	190	2,413	2,657	2,933	5,354	1,216
<b>Workshare Equivalency</b>	60	20	40	575	635	723	1,305	322
<b>Interstate-Liable</b>	51	26	25	466	517	566	861	755
<b>TDI Claims</b>	790	641	149	7,599	8,389	8,626	7,996	9,378
Change from:								
Previous Week	-40	-37	-3	-197	-237			
Year Ago	237	193	44	156	393			

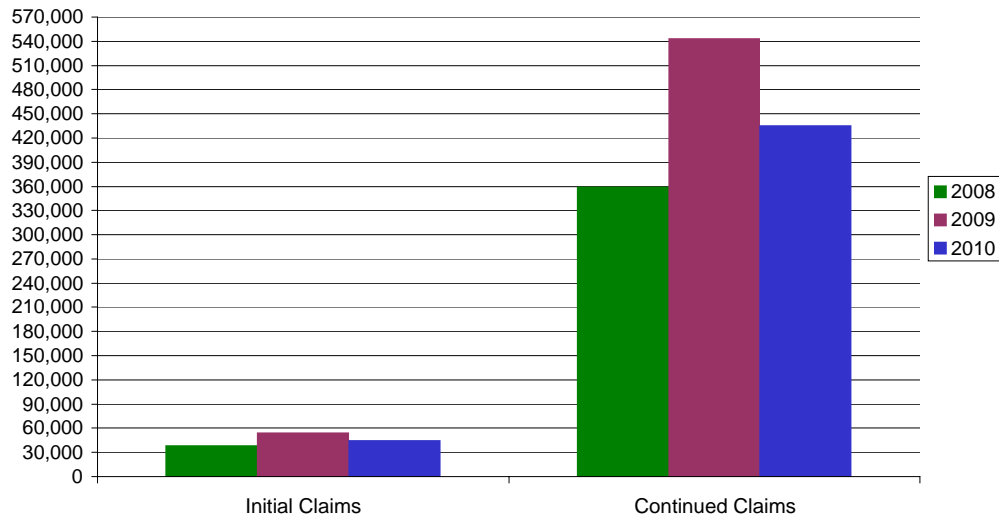
\* Includes UI, EUC08, EB, Workshare & Interstate Liable.

**a product of: Labor Market Information unit**

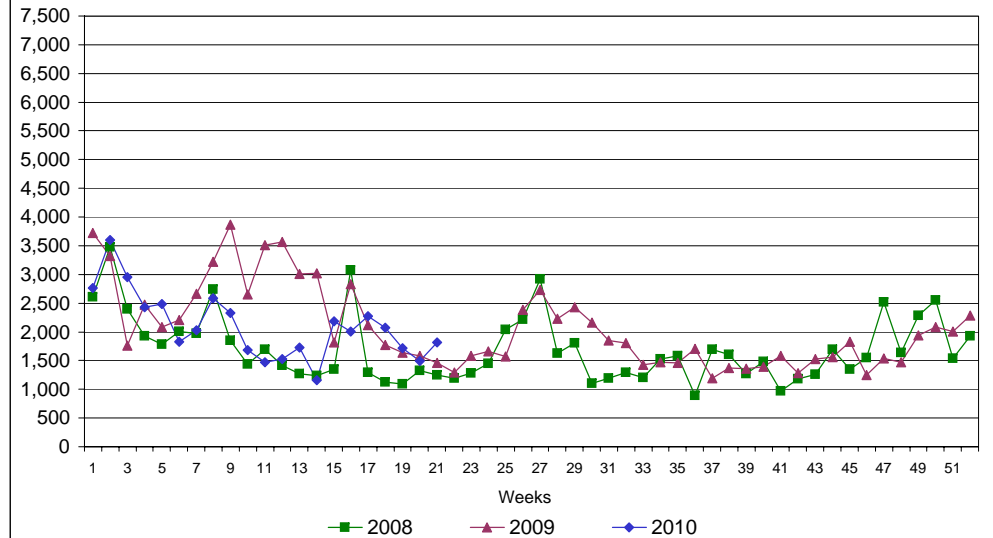
# Rhode Island Department of Labor and Training

## May 22, 2010

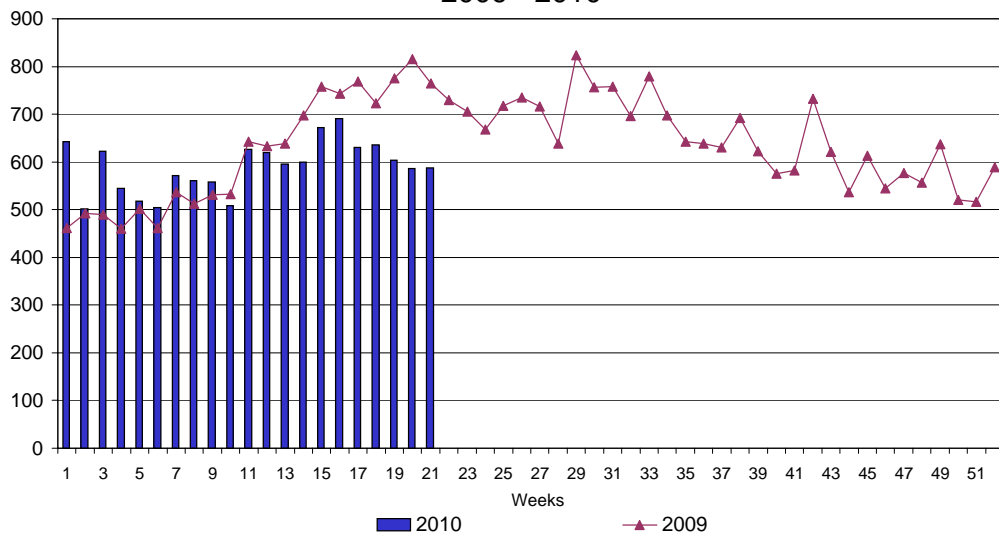
### UI Claims Comparison Year to Date



### UI Initial Claims 2008 - 2010



### UI Exhaustions 2009 - 2010



### TDI Claims Comparison Year to Date

