



## Rhode Island Department of Labor and Training

# *Weekly Update of Claims Activity*

*Week Ending: May 29, 2010*

### ***Unemployment Insurance***

**Initial Claims** – 1,497 initial claims were processed during the week ending 5/29/10, a decrease of 320 from the previous week, and an increase of 201 from a year ago. The number of initial claims filed to date is down 21.8 percent below last year and up 13.4 percent from two years ago.

**Continued Claims** – 16,640 continued claims were processed during the week of 5/29/10, a decrease of 109 from the previous week and a decrease of 3,417 from a year ago. The number of continued claims filed to date is down 24.8 percent from a year ago and up 17.7 percent from two years ago.

**Workshare** – gives employers an alternative to layoffs by allowing employees to work reduced hours and collect a percentage of regular UI benefits to compensate for lost pay. This week, 183 initial claims and 2,736 continued claims were processed. An estimated 47 layoffs were prevented this week, as a result of Workshare.

**Emergency Unemployment Compensation 08** – EUC08, which became effective July 6, 2008, provides up to 53 weeks of federally funded benefits to eligible individuals who exhausted their UI claims. This week there were 667 new EUC08 claims processed and 17,361 continued claims processed (6,475 under tier I, 4,338 under tier II, 4,605 under tier III and 1,943 under tier IV).

**Extended Benefits** – are payable to individuals who have exhausted EUC08 claims. This week, 288 new EB claims and 1,506 continued EB claims were processed.

**Exhaustions** – 584 individuals exhausted their regular payments this week, a decrease of 4 from the previous week and a decrease 145 from a year ago. There were 307 individuals that exhausted EUC08 and 16 individuals that exhausted EB.

### ***Temporary Disability Insurance***

**Temporary Disability Insurance** – 636 initial claims and 7,869 continued claims were processed for Temporary Disability Insurance. The average weekly TDI payment is \$432 per week. Rhode Island is currently paying an average of 10.7 weeks per new claim.

	Initial Claims	New Claims	Additional Claims	Continued Claims	Current Week	Previous Week	Year Ago	Two Years Ago
<b>Total - All programs*</b>	2,986	1,945	1,041	38,802	41,788	41,478	40,720	16,678
<b>UI Claims</b>	1,497	928	569	16,640	18,137	18,566	21,353	13,554
Change from:								
Previous Week	-320	-160	-160	-109	-429			
Year Ago	201	281	-80	-3,417	-3,216			
Two Years Ago	308	155	153	4,275	4,583			
<b>EUC08 Claims</b>	954	667	287	17,361	18,315	18,190	10,593	
<b>Extended Benefits</b>	306	288	18	1,506	1,812	1,548	3,418	
<b>UI Exhaustions</b>	-	-	-	584	584	588	729	341
<b>EUC08 Exhaustions</b>	-	-	-	307	307	369	203	-
<b>EB Exhaustions</b>	-	-	-	16	16	32	84	-
<b>Workshare</b>	183	31	152	2,736	2,919	2,657	4,573	2,367
<b>Workshare Equivalency</b>	47	9	38	645	692	635	1,178	511
<b>Interstate-Liable</b>	46	31	15	559	605	517	783	757
<b>TDI Claims</b>	636	527	109	7,869	8,505	8,389	6,775	9,522
Change from:								
Previous Week	-154	-114	-40	270	116			
Year Ago	-68	-59	-9	1,798	1,730			

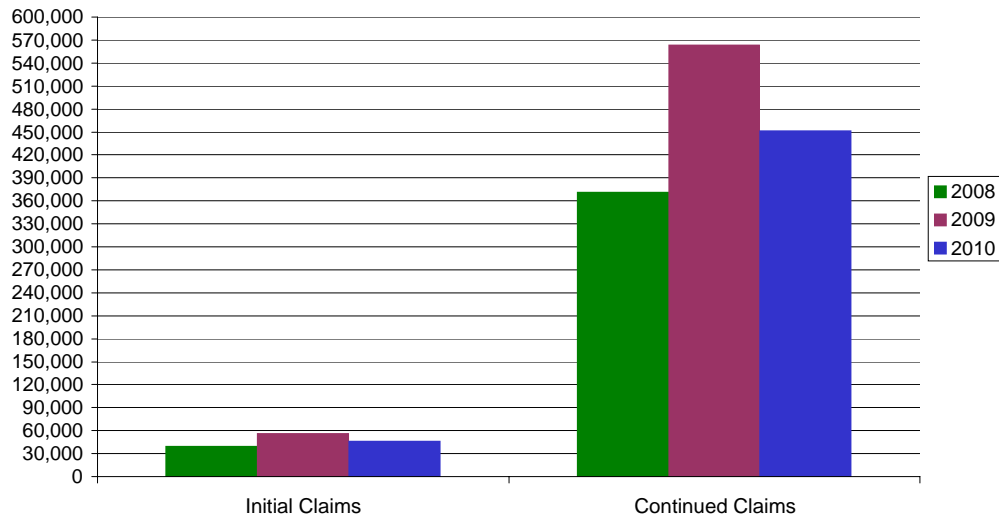
\* Includes UI, EUC08, EB, Workshare & Interstate Liable.

**a product of: Labor Market Information unit**

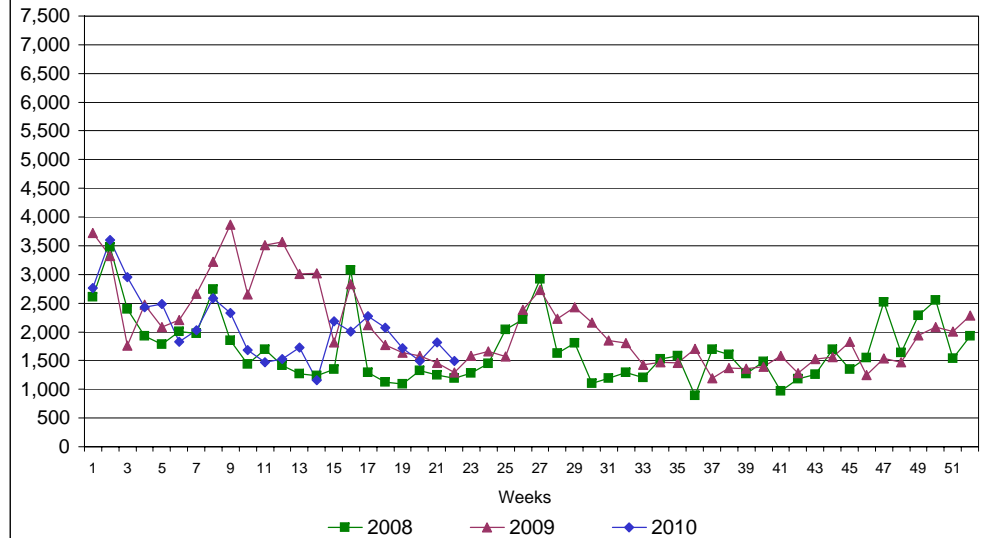
# Rhode Island Department of Labor and Training

## May 29, 2010

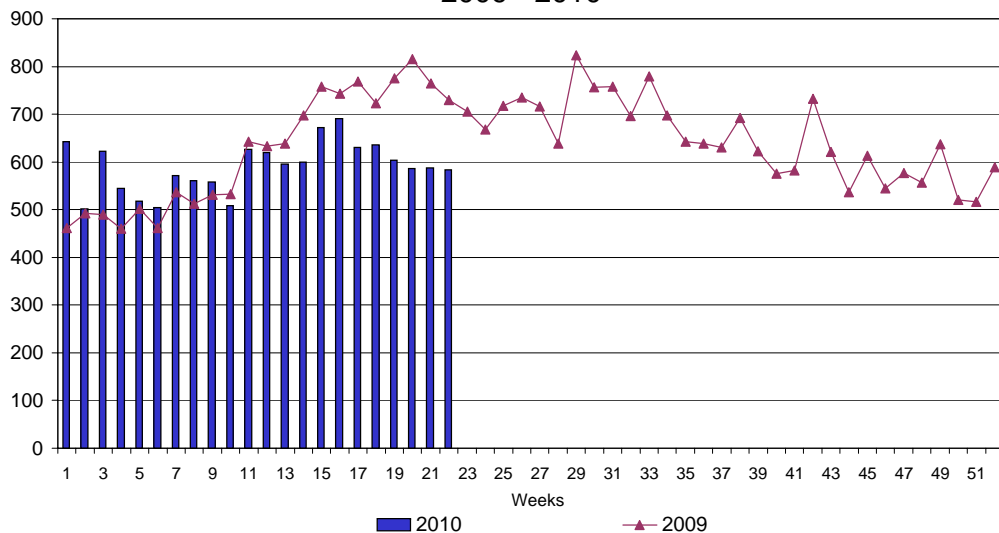
### UI Claims Comparison Year to Date



### UI Initial Claims 2008 - 2010



### UI Exhaustions 2009 - 2010



### TDI Claims Comparison Year to Date

