



Rhode Island Department of Labor and Training

Weekly Update of Claims Activity

Week Ending: June 12, 2010

Unemployment Insurance

Initial Claims – 1,468 initial claims were processed during the week ending 6/12/10, an increase of 186 from the previous week, and a decrease of 192 from a year ago. The number of initial claims filed to date is down 21.6 percent below last year and up 12.7 percent from two years ago.

Continued Claims – 15,461 continued claims were processed during the week of 6/12/10, an increase of 350 from the previous week and a decrease of 4,414 from a year ago. The number of continued claims filed to date is down 25.3 percent from a year ago and up 17.8 percent from two years ago.

Workshare – gives employers an alternative to layoffs by allowing employees to work reduced hours and collect a percentage of regular UI benefits to compensate for lost pay. This week, 234 initial claims and 2,557 continued claims were processed. An estimated 63 layoffs were prevented this week, as a result of Workshare.

Emergency Unemployment Compensation 08 – EUC08, which became effective July 6, 2008, provides up to 53 weeks of federally funded benefits to eligible individuals who exhausted their UI claims. This week there were 42 new EUC08 claims processed and 16,844 continued claims processed (6,014 under tier I, 4,210 under tier II, 4,388 under tier III and 2,232 under tier IV).

Extended Benefits – are payable to individuals who have exhausted EUC08 claims. This week, 1,129 new EB claims and 2,218 continued EB claims were processed.

Exhaustions – 483 individuals exhausted their regular payments this week, a decrease of 61 from the previous week and a decrease 185 from a year ago. There were 340 individuals that exhausted EUC08 and 29 individuals that exhausted EB.

Temporary Disability Insurance

Temporary Disability Insurance – 927 initial claims and 7,728 continued claims were processed for Temporary Disability Insurance. The average weekly TDI payment is \$429 per week. Rhode Island is currently paying an average of 10.7 weeks per new claim.

	Initial Claims	New Claims	Additional Claims	Continued Claims	Current Week	Previous Week	Year Ago	Two Years Ago
Total - All programs*	3,116	2,067	1,049	37,559	40,675	38,377	42,184	16,533
UI Claims	1,468	832	636	15,461	16,929	16,393	21,535	13,806
Change from:								
Previous Week	186	43	143	350	536			
Year Ago	-192	-99	-93	-4,414	-4,606			
Two Years Ago	24	14	10	3,099	3,123			
EUC08 Claims	230	42	188	16,844	17,074	17,336	11,270	
Extended Benefits	1,136	1,129	7	2,218	3,354	2,380	3,424	
UI Exhaustions	-	-	-	483	483	544	668	398
EUC08 Exhaustions	-	-	-	340	340	293	220	-
EB Exhaustions	-	-	-	29	29	33	72	-
Workshare	234	41	193	2,557	2,791	1,771	5,186	1,946
Workshare Equivalency	63	11	52	622	685	461	1,310	444
Interstate-Liable	48	23	25	479	527	497	769	781
TDI Claims	927	769	158	7,728	8,655	7,945	8,025	9,396
Change from:								
Previous Week	162	137	25	548	710			
Year Ago	64	63	1	566	630			

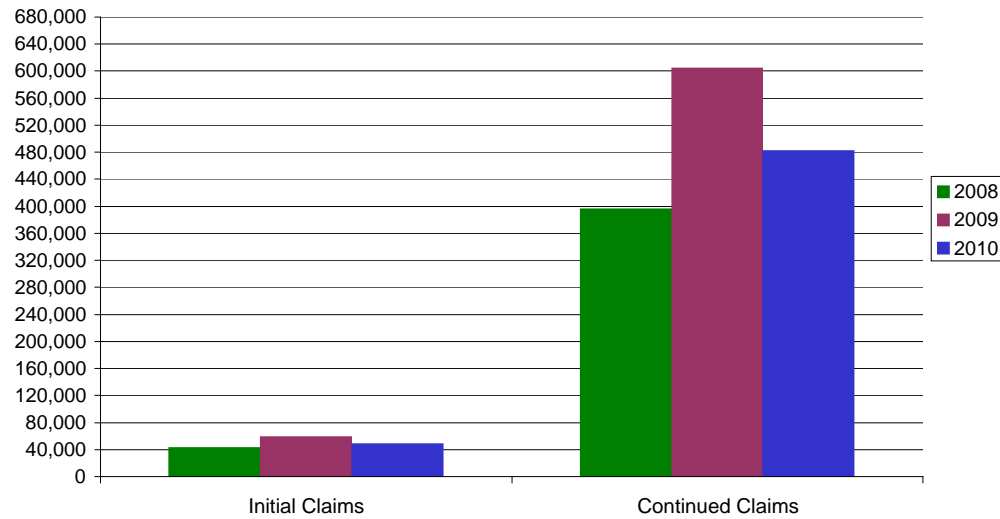
* Includes UI, EUC08, EB, Workshare & Interstate Liable.

a product of: Labor Market Information unit

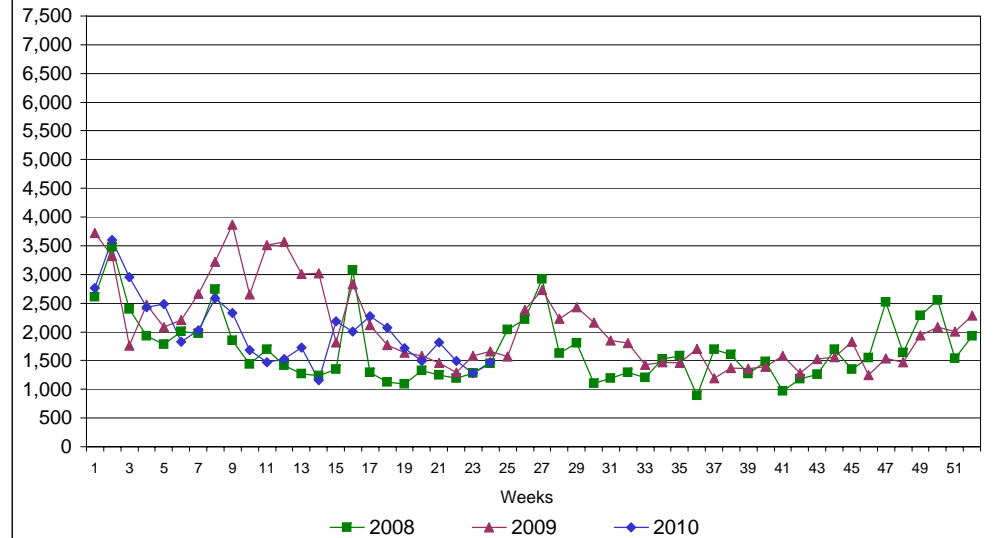
Rhode Island Department of Labor and Training

June 12, 2010

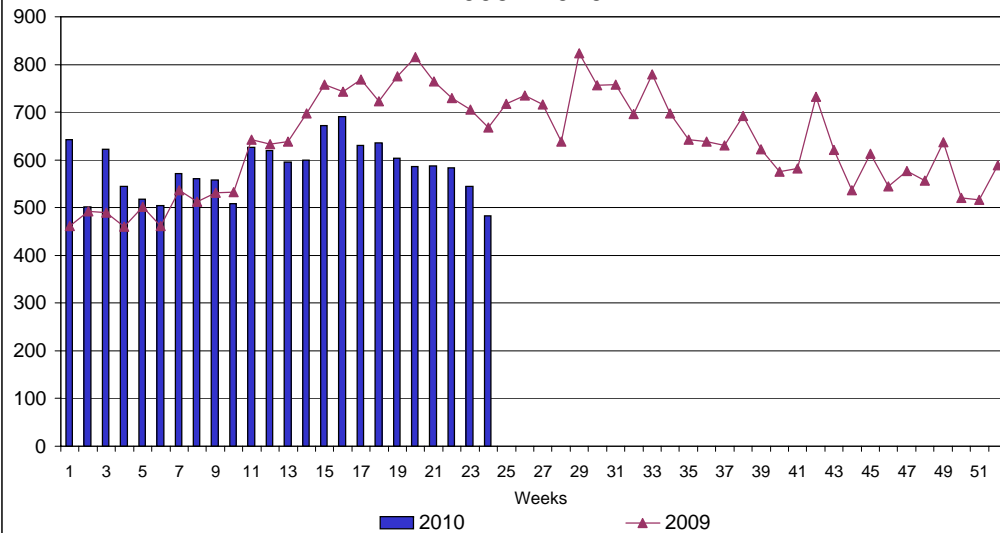
UI Claims Comparison Year to Date



UI Initial Claims 2008 - 2010



UI Exhaustions 2009 - 2010



TDI Claims Comparison Year to Date

