



Rhode Island Department of Labor and Training

Weekly Update of Claims Activity

Week Ending: June 19, 2010

Unemployment Insurance

Initial Claims – 1,762 initial claims were processed during the week ending 6/19/10, an increase of 294 from the previous week, and an increase of 187 from a year ago. The number of initial claims filed to date is down 20.5 percent below last year and up 11.7 percent from two years ago.

Continued Claims – 15,567 continued claims were processed during the week of 6/19/10, an increase of 106 from the previous week and a decrease of 4,766 from a year ago. The number of continued claims filed to date is down 25.5 percent from a year ago and up 17.9 percent from two years ago.

Workshare – gives employers an alternative to layoffs by allowing employees to work reduced hours and collect a percentage of regular UI benefits to compensate for lost pay. This week, 176 initial claims and 1,609 continued claims were processed. An estimated 39 layoffs were prevented this week, as a result of Workshare.

Emergency Unemployment Compensation 08 – EUC08, which became effective July 6, 2008, provides up to 53 weeks of federally funded benefits to eligible individuals who exhausted their UI claims. This week there were 28 new EUC08 claims processed and 15,667 continued claims processed (5,692 under tier I, 3,890 under tier II, 4,038 under tier III and 2,047 under tier IV). Individuals may establish initial eligibility for EUC08 benefits through June 2, 2010.

Extended Benefits – are payable to individuals who have exhausted UI or EUC08 claims. This week, 1,369 new EB claims and 3,125 continued EB claims were processed.

Exhaustions – 528 individuals exhausted their regular payments this week, an increase of 45 from the previous week and a decrease 190 from a year ago. There were 318 individuals that exhausted EUC08 and 38 individuals that exhausted EB.

Temporary Disability Insurance

Temporary Disability Insurance – 838 initial claims and 7,485 continued claims were processed for Temporary Disability Insurance. The average weekly TDI payment is \$430 per week. Rhode Island is currently paying an average of 10.7 weeks per new claim.

	Initial Claims	New Claims	Additional Claims	Continued Claims	Current Week	Previous Week	Year Ago	Two Years Ago
Total - All programs*	3,531	2,433	1,098	36,422	39,953	40,675	41,830	16,736
UI Claims	1,762	978	784	15,567	17,329	16,929	21,908	14,373
Change from:								
Previous Week	294	146	148	106	400			
Year Ago	187	140	47	-4,766	-4,579			
Two Years Ago	-279	13	-292	3,235	2,956			
EUC08 Claims	177	28	149	15,667	15,844	17,074	11,560	
Extended Benefits	1,376	1,369	7	3,125	4,501	3,354	3,532	
UI Exhaustions	-	-	-	528	528	483	718	326
EUC08 Exhaustions	-	-	-	318	318	340	248	-
EB Exhaustions	-	-	-	38	38	29	77	-
Workshare	176	37	139	1,609	1,785	2,791	3,978	1,592
Workshare Equivalency	39	10	29	401	440	685	937	380
Interstate-Liable	40	21	19	454	494	527	852	771
TDI Claims	838	721	117	7,485	8,323	8,655	8,425	10,403
Change from:								
Previous Week	-89	-48	-41	-243	-332			
Year Ago	-34	-12	-22	-68	-102			

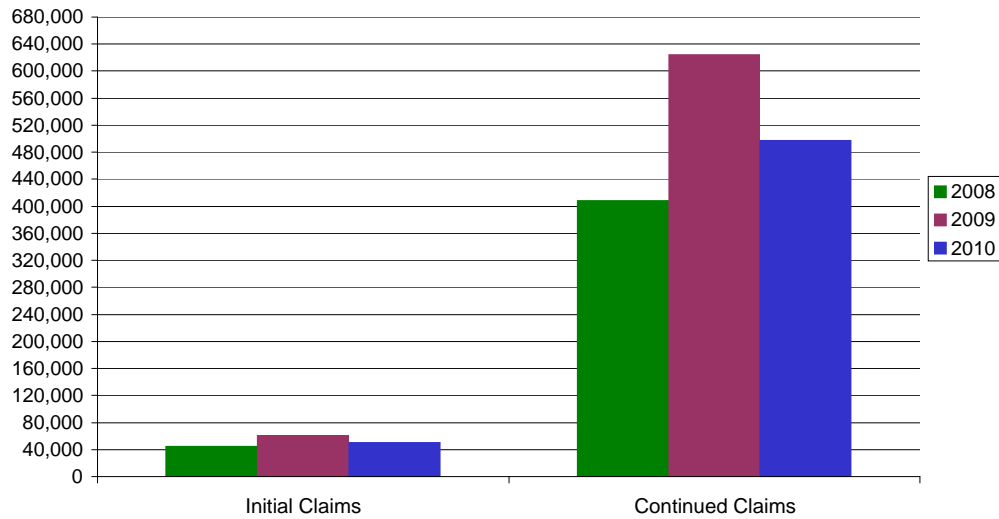
* Includes UI, EUC08, EB, Workshare & Interstate Liable.

a product of: Labor Market Information unit

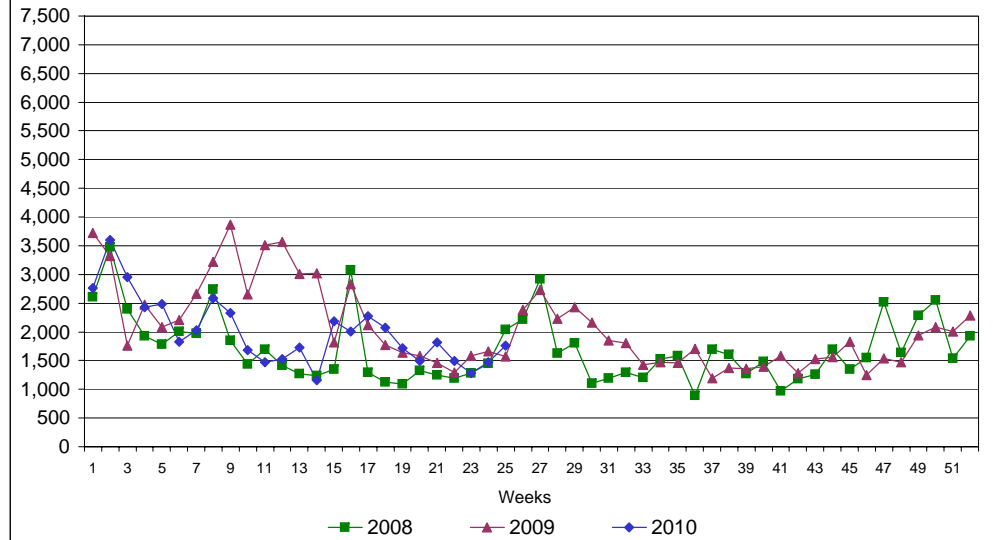
Rhode Island Department of Labor and Training

June 19, 2010

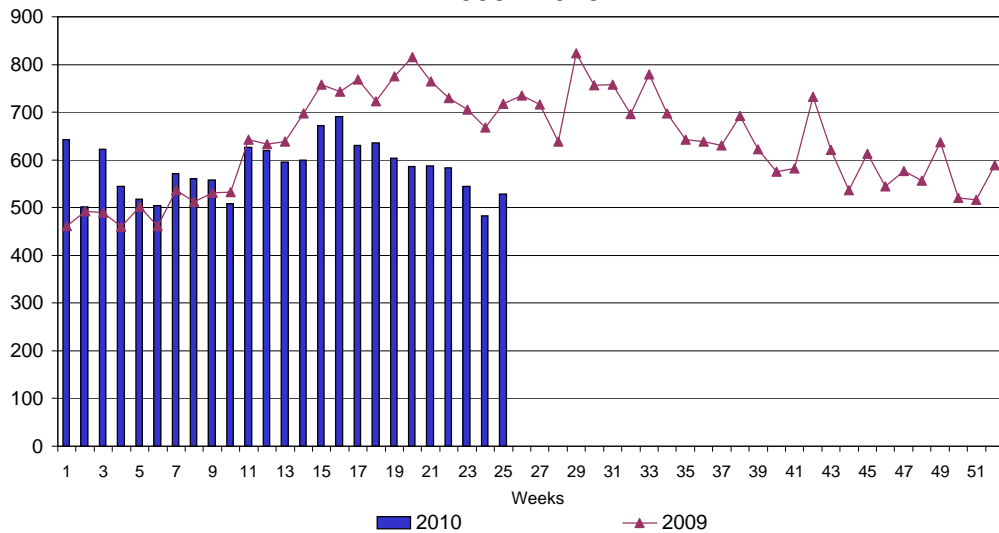
UI Claims Comparison Year to Date



UI Initial Claims 2008 - 2010



UI Exhaustions 2009 - 2010



TDI Claims Comparison Year to Date

