



Rhode Island Department of Labor and Training

Weekly Update of Claims Activity

Week Ending: June 26, 2010

Unemployment Insurance

Initial Claims – 2,859 initial claims were processed during the week ending 6/26/10, an increase of 1,097 from the previous week, and an increase of 479 from a year ago. The number of initial claims filed to date is down 18.5 percent below last year and up 12.2 percent from two years ago.

Continued Claims – 14,818 continued claims were processed during the week of 6/26/10, a decrease of 749 from the previous week and a decrease of 4,792 from a year ago. The number of continued claims filed to date is down 25.7 percent from a year ago and up 17.7 percent from two years ago.

Workshare – gives employers an alternative to layoffs by allowing employees to work reduced hours and collect a percentage of regular UI benefits to compensate for lost pay. This week, 293 initial claims and 1,909 continued claims were processed. An estimated 71 layoffs were prevented this week, as a result of Workshare.

Emergency Unemployment Compensation 08 – EUC08, which became effective July 6, 2008, provides up to 53 weeks of federally funded benefits to eligible individuals who exhausted their UI claims. This week there were 16 new EUC08 claims processed and 14,072 continued claims processed (5,214 under tier I, 3,466 under tier II, 3,644 under tier III and 1,748 under tier IV). Individuals may establish initial eligibility for EUC08 benefits through June 2, 2010.

Extended Benefits – are payable to individuals who have exhausted UI or EUC08 claims. This week, 1,320 new EB claims and 4,274 continued EB claims were processed.

Exhaustions – 480 individuals exhausted their regular payments this week, a decrease of 48 from the previous week and a decrease 255 from a year ago. There were 358 individuals that exhausted EUC08 and 36 individuals that exhausted EB.

Temporary Disability Insurance

Temporary Disability Insurance – 869 initial claims and 8,038 continued claims were processed for Temporary Disability Insurance. The average weekly TDI payment is \$431 per week. Rhode Island is currently paying an average of 10.7 weeks per new claim.

	Initial Claims	New Claims	Additional Claims	Continued Claims	Current Week	Previous Week	Year Ago	Two Years Ago
Total - All programs*	4,667	2,814	1,853	35,537	40,204	39,953	42,735	17,164
UI Claims	2,859	1,368	1,491	14,818	17,677	17,329	21,990	15,399
Change from:								
Previous Week	1,097	390	707	-749	348			
Year Ago	479	79	400	-4,792	-4,313			
Two Years Ago	644	95	549	1,634	2,278			
EUC08 Claims	155	16	139	14,072	14,227	15,844	11,514	
Extended Benefits	1,329	1,320	9	4,274	5,603	4,501	3,476	
UI Exhaustions	-	-	-	480	480	528	735	333
EUC08 Exhaustions	-	-	-	358	358	318	216	-
EB Exhaustions	-	-	-	36	36	38	78	-
Workshare	293	91	202	1,909	2,202	1,785	4,966	956
Workshare Equivalency	71	20	51	499	570	440	1,207	240
Interstate-Liable	31	19	12	464	495	494	789	809
TDI Claims	869	714	155	8,038	8,907	8,323	8,307	10,197
Change from:								
Previous Week	31	-7	38	553	584			
Year Ago	-58	-44	-14	658	600			

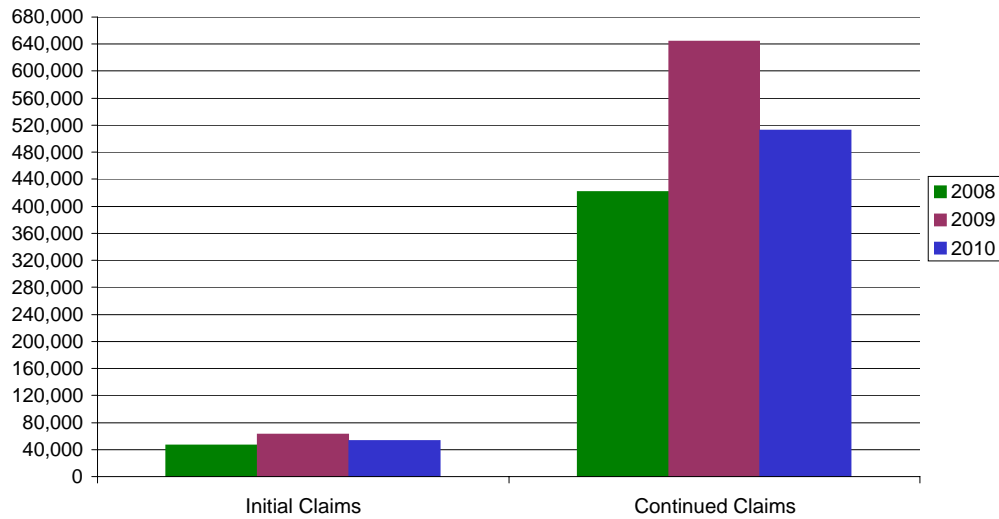
* Includes UI, EUC08, EB, Workshare & Interstate Liable.

a product of: Labor Market Information unit

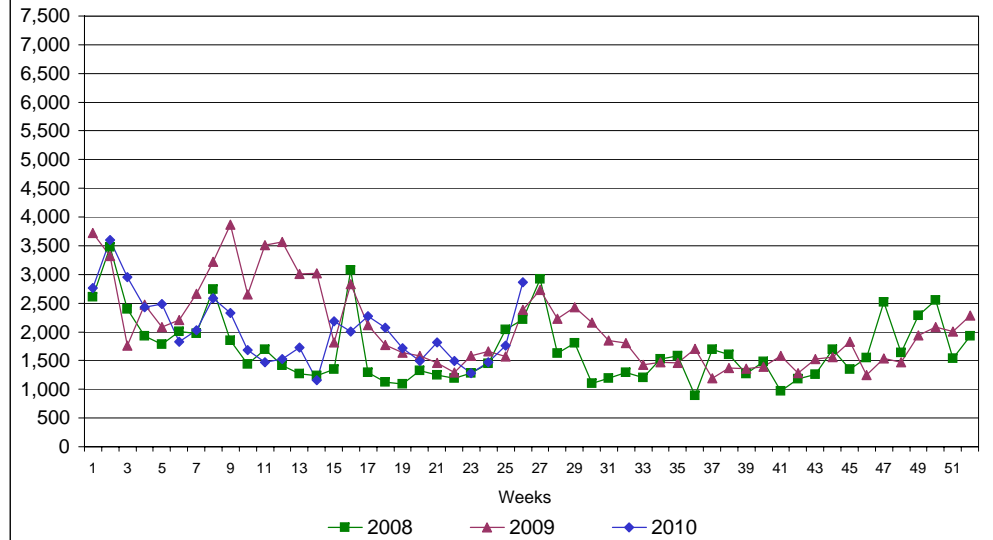
Rhode Island Department of Labor and Training

June 26, 2010

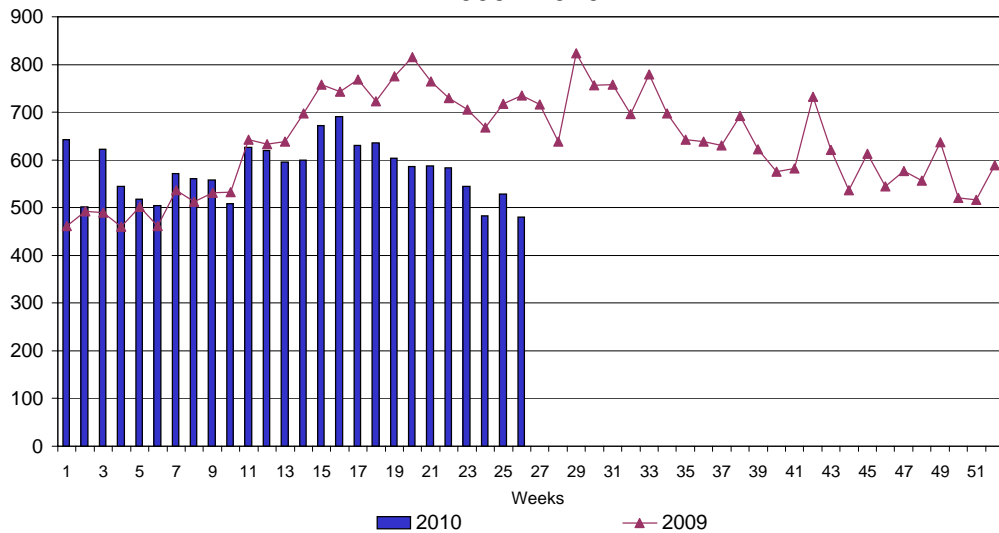
UI Claims Comparison Year to Date



UI Initial Claims 2008 - 2010



UI Exhaustions 2009 - 2010



TDI Claims Comparison Year to Date

