



Rhode Island Department of Labor and Training

Weekly Update of Claims Activity

Week Ending: July 3, 2010

Unemployment Insurance

Initial Claims – 2,391 initial claims were processed during the week ending 7/3/10, a decrease of 468 from the previous week, and a decrease of 341 from a year ago. The number of initial claims filed to date is down 18.3 percent below last year and up 10.8 percent from two years ago.

Continued Claims – 16,811 continued claims were processed during the week of 7/3/10, an increase of 1,993 from the previous week and a decrease of 4,898 from a year ago. The number of continued claims filed to date is down 25.8 percent from a year ago and up 17.6 percent from two years ago.

Workshare – gives employers an alternative to layoffs by allowing employees to work reduced hours and collect a percentage of regular UI benefits to compensate for lost pay. This week, 131 initial claims and 1,859 continued claims were processed. An estimated 27 layoffs were prevented this week, as a result of Workshare.

Emergency Unemployment Compensation 08 – EUC08, which became effective July 6, 2008, provides up to 53 weeks of federally funded benefits to eligible individuals who exhausted their UI claims. This week there were 18 new EUC08 claims processed and 12,627 continued claims processed (4,882 under tier I, 3,165 under tier II, 3,136 under tier III and 1,444 under tier IV). Individuals may establish initial eligibility for EUC08 benefits through June 2, 2010.

Extended Benefits – are payable to individuals who have exhausted UI or EUC08 claims. This week, 1,459 new EB claims and 5,481 continued EB claims were processed.

Exhaustions – 515 individuals exhausted their regular payments this week, an increase of 35 from the previous week and a decrease 201 from a year ago. There were 394 individuals that exhausted EUC08 and 40 individuals that exhausted EB.

Temporary Disability Insurance

Temporary Disability Insurance – 782 initial claims and 7,376 continued claims were processed for Temporary Disability Insurance. The average weekly TDI payment is \$429 per week. Rhode Island is currently paying an average of 10.8 weeks per new claim.

	Initial Claims	New Claims	Additional Claims	Continued Claims	Current Week	Previous Week	Year Ago	Two Years Ago
Total - All programs*	4,265	2,898	1,367	37,240	41,505	40,204	45,165	19,665
UI Claims	2,391	1,373	1,018	16,811	19,202	17,677	24,441	17,009
Change from:								
Previous Week	-468	5	-473	1,993	1,525			
Year Ago	-341	-95	-246	-4,898	-5,239			
Two Years Ago	-532	-392	-140	2,725	2,193			
EUC08 Claims	205	18	187	12,627	12,832	14,227	11,763	
Extended Benefits	1,483	1,459	24	5,481	6,964	5,603	3,747	
UI Exhaustions	-	-	-	515	515	480	716	301
EUC08 Exhaustions	-	-	-	394	394	358	226	-
EB Exhaustions	-	-	-	40	40	36	87	-
Workshare	131	7	124	1,859	1,990	2,202	4,310	1,806
Workshare Equivalency	27	1	26	432	459	570	1,064	535
Interstate-Liable	55	41	14	462	517	495	904	850
TDI Claims	782	640	142	7,376	8,158	8,907	9,214	7,076
Change from:								
Previous Week	-87	-74	-13	-662	-749			
Year Ago	-83	-100	17	-973	-1,056			

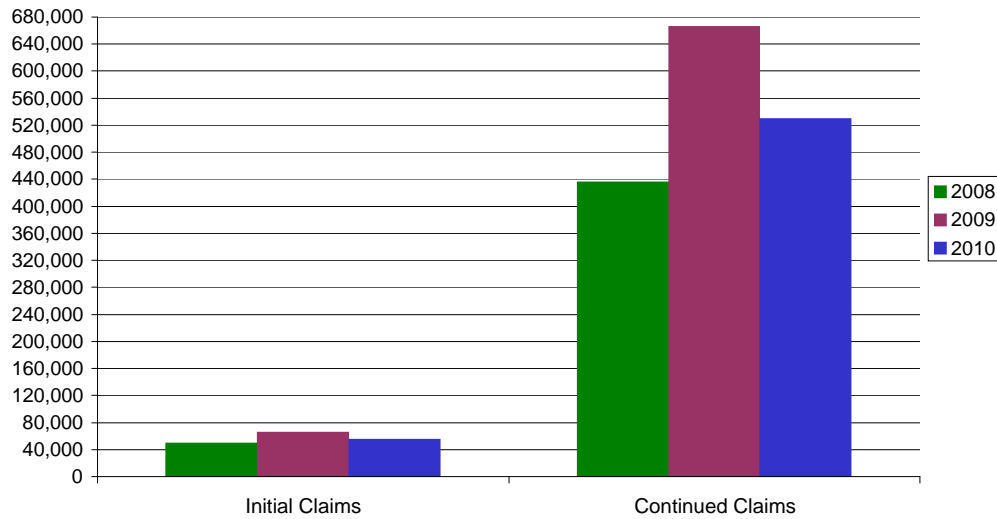
* Includes UI, EUC08, EB, Workshare & Interstate Liable.

a product of: Labor Market Information unit

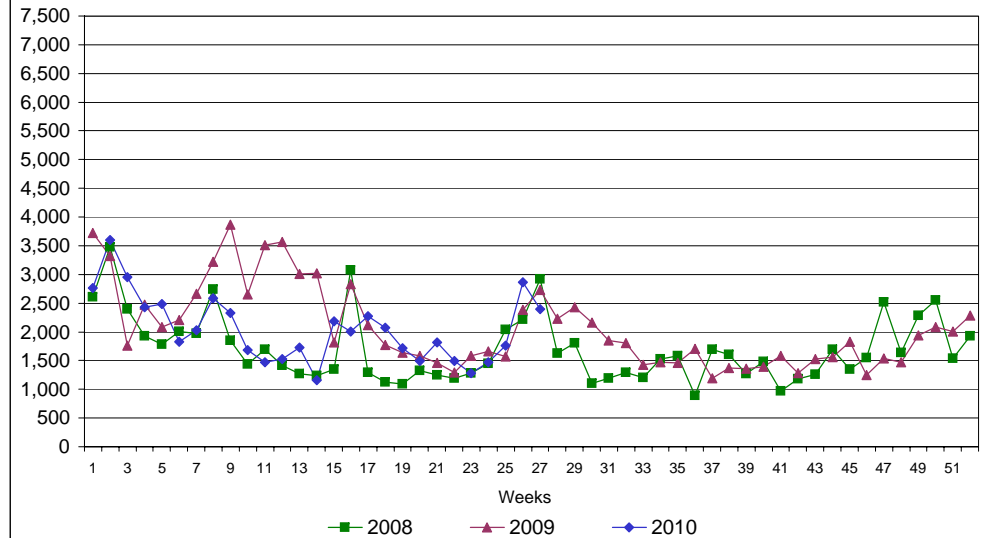
Rhode Island Department of Labor and Training

July 3, 2010

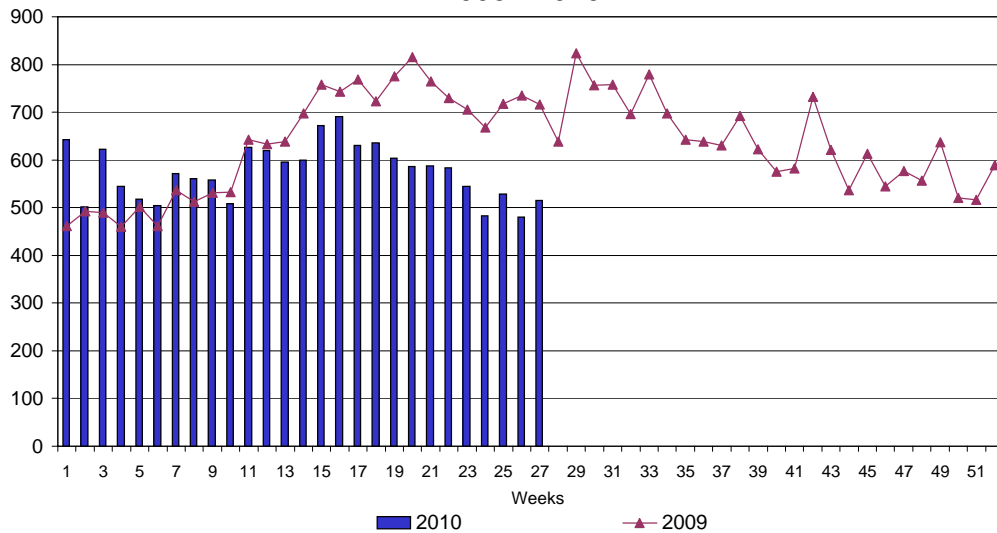
UI Claims Comparison Year to Date



UI Initial Claims 2008 - 2010



UI Exhaustions 2009 - 2010



TDI Claims Comparison Year to Date

