



Rhode Island Department of Labor and Training

Weekly Update of Claims Activity

Week Ending: July 10, 2010

Unemployment Insurance

Initial Claims – 1,668 initial claims were processed during the week ending 7/10/10, a decrease of 723 from the previous week, and a decrease of 556 from a year ago. The number of initial claims filed to date is down 18.7 percent below last year and up 10.5 percent from two years ago.

Continued Claims – 16,236 continued claims were processed during the week of 7/10/10, a decrease of 575 from the previous week and a decrease of 4,255 from a year ago. The number of continued claims filed to date is down 25.8 percent from a year ago and up 17.2 percent from two years ago.

Workshare – gives employers an alternative to layoffs by allowing employees to work reduced hours and collect a percentage of regular UI benefits to compensate for lost pay. This week, 41 initial claims and 1,590 continued claims were processed. An estimated 9 layoffs were prevented this week, as a result of Workshare.

Emergency Unemployment Compensation 08 – EUC08, which became effective July 6, 2008, provides up to 53 weeks of federally funded benefits to eligible individuals who exhausted their UI claims. This week there were 10 new EUC08 claims processed and 10,865 continued claims processed (4,376 under tier I, 2,706 under tier II, 2,716 under tier III and 1,067 under tier IV). Individuals may establish initial eligibility for EUC08 benefits through June 2, 2010.

Extended Benefits – are payable to individuals who have exhausted UI or EUC08 claims. This week, 1,176 new EB claims and 6,530 continued EB claims were processed.

Exhaustions – 464 individuals exhausted their regular payments this week, a decrease of 51 from the previous week and a decrease 175 from a year ago. There were 53 individuals that exhausted EB.

Temporary Disability Insurance

Temporary Disability Insurance – 691 initial claims and 7,348 continued claims were processed for Temporary Disability Insurance. The average weekly TDI payment is \$437 per week. Rhode Island is currently paying an average of 10.8 weeks per new claim.

	Initial Claims	New Claims	Additional Claims	Continued Claims	Current Week	Previous Week	Year Ago	Two Years Ago
Total - All programs*	3,083	2,316	767	35,690	38,773	41,505	42,892	20,549
UI Claims	1,668	1,109	559	16,236	17,904	19,202	22,715	17,329
Change from:								
Previous Week	-723	-264	-459	-575	-1,298			
Year Ago	-556	-112	-444	-4,255	-4,811			
Two Years Ago	37	14	23	538	575			
EUC08 Claims	158	10	148	10,865	11,023	12,832	11,429	1,510
Extended Benefits	1,190	1,176	14	6,530	7,720	6,964	3,449	
UI Exhaustions	-	-	-	464	464	515	639	343
EB Exhaustions	-	-	-	53	53	40	96	
Workshare	41	7	34	1,590	1,631	1,990	4,572	840
Workshare Equivalency	9	2	7	424	433	459	1,218	292
Interstate-Liable	26	14	12	469	495	517	727	870
TDI Claims	691	577	114	7,348	8,039	8,158	6,913	8,770
Change from:								
Previous Week	-91	-63	-28	-28	-119			
Year Ago	-3	-15	12	1,129	1,126			

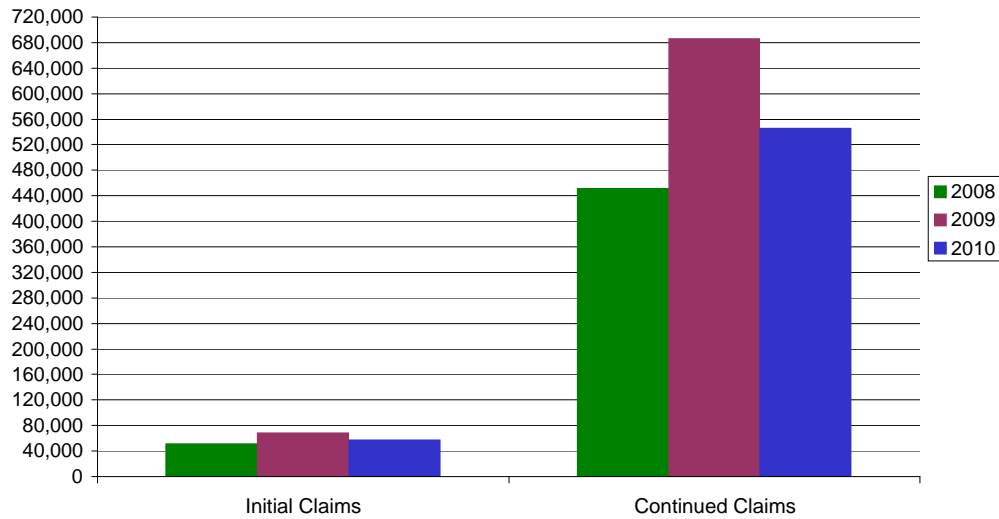
* Includes UI, EUC08, EB, Workshare & Interstate Liable.

a product of: Labor Market Information unit

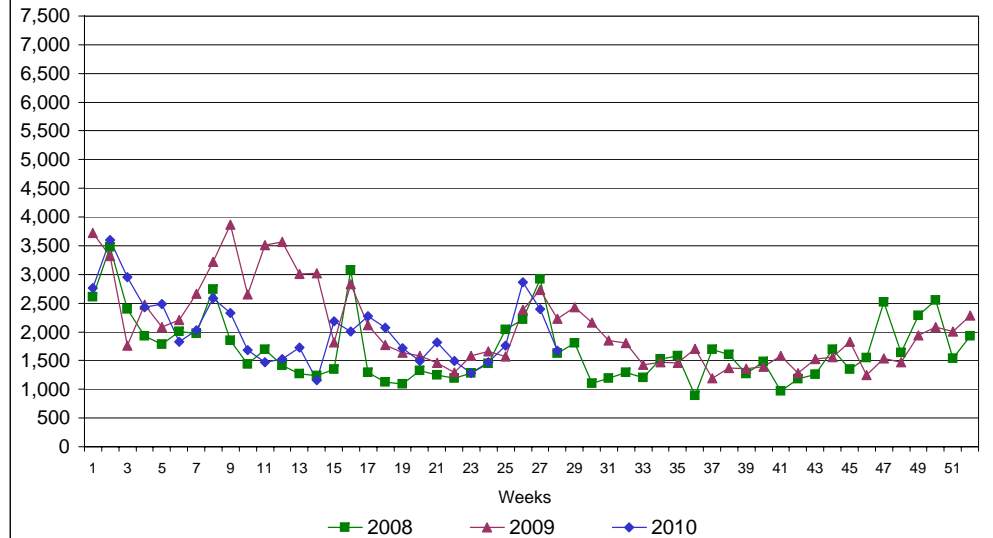
Rhode Island Department of Labor and Training

July 10, 2010

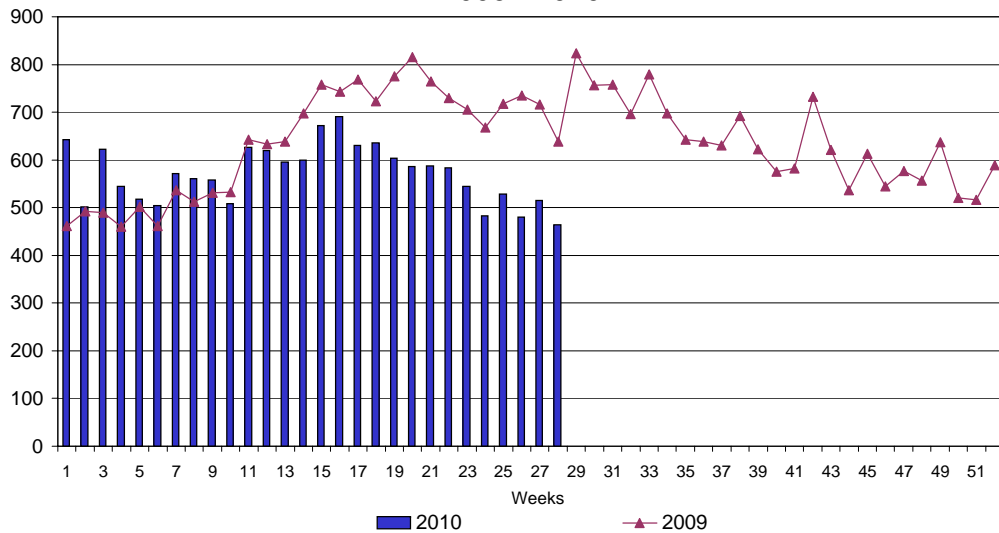
UI Claims Comparison Year to Date



UI Initial Claims 2008 - 2010



UI Exhaustions 2009 - 2010



TDI Claims Comparison Year to Date

