



Rhode Island Department of Labor and Training

Weekly Update of Claims Activity

Week Ending: July 17, 2010

Unemployment Insurance

Initial Claims – 1,467 initial claims were processed during the week ending 7/17/10, a decrease of 201 from the previous week, and a decrease of 960 from a year ago. The number of initial claims filed to date is down 19.9 percent below last year and up 9.7 percent from two years ago.

Continued Claims – 17,666 continued claims were processed during the week of 7/17/10, an increase of 1,430 from the previous week and a decrease of 3,689 from a year ago. The number of continued claims filed to date is down 25.7 percent from a year ago and up 17.1 percent from two years ago.

Workshare – gives employers an alternative to layoffs by allowing employees to work reduced hours and collect a percentage of regular UI benefits to compensate for lost pay. This week, 212 initial claims and 1,496 continued claims were processed. An estimated 56 layoffs were prevented this week, as a result of Workshare.

Emergency Unemployment Compensation 08 – EUC08, which became effective July 6, 2008, provides up to 53 weeks of federally funded benefits to eligible individuals who exhausted their UI claims. This week there were 8 new EUC08 claims processed and 9,418 continued claims processed (3,975 under tier I, 2,441 under tier II, 2,295 under tier III and 707 under tier IV). Individuals may establish initial eligibility for EUC08 benefits through June 2, 2010.

Extended Benefits – are payable to individuals who have exhausted UI or EUC08 claims. This week, 1,453 new EB claims and 7,640 continued EB claims were processed.

Exhaustions – 520 individuals exhausted their regular payments this week, an increase of 56 from the previous week and a decrease 304 from a year ago. There were 53 individuals that exhausted EB.

Temporary Disability Insurance

Temporary Disability Insurance – 836 initial claims and 8,297 continued claims were processed for Temporary Disability Insurance. The average weekly TDI payment is \$429 per week. Rhode Island is currently paying an average of 10.7 weeks per new claim.

	Initial Claims	New Claims	Additional Claims	Continued Claims	Current Week	Previous Week	Year Ago	Two Years Ago
Total - All programs*	3,315	2,549	766	36,722	40,037	38,773	43,537	23,857
UI Claims	1,467	959	508	17,666	19,133	17,904	23,782	17,051
Change from:								
Previous Week	-201	-150	-51	1,430	1,229			
Year Ago	-960	-490	-470	-3,689	-4,649			
Two Years Ago	-343	-282	-61	2,425	2,082			
EUC08 Claims	115	8	107	9,418	9,533	11,023	11,867	4,796
Extended Benefits	1,477	1,453	24	7,640	9,117	7,720	3,531	
UI Exhaustions	-			520	520	464	824	365
EB Exhaustions	-			53	53	53	411	
Workshare	212	99	113	1,496	1,708	1,631	3,615	1,135
Workshare Equivalency	56	28	28	481	537	433	1,068	452
Interstate-Liable	44	30	14	502	546	495	742	875
TDI Claims	836	697	139	8,297	9,133	8,039	9,005	10,387
Change from:								
Previous Week	145	120	25	949	1,094			
Year Ago	232	185	47	-104	128			

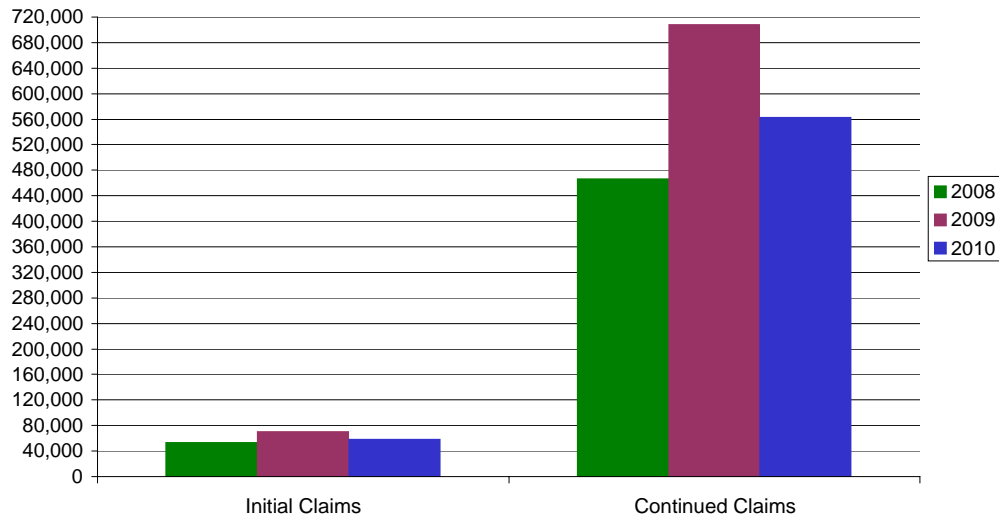
* Includes UI, EUC08, EB, Workshare & Interstate Liable.

a product of: Labor Market Information unit

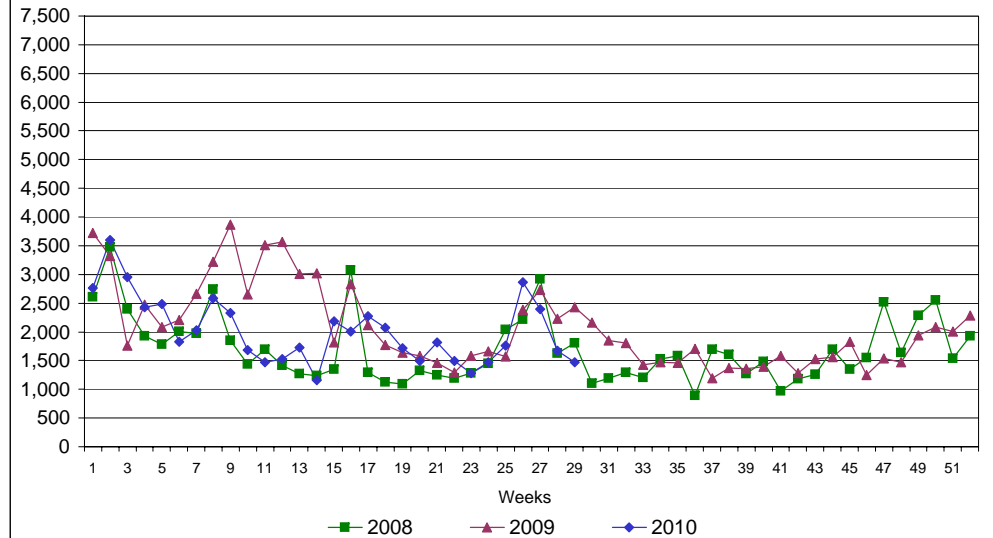
Rhode Island Department of Labor and Training

July 17, 2010

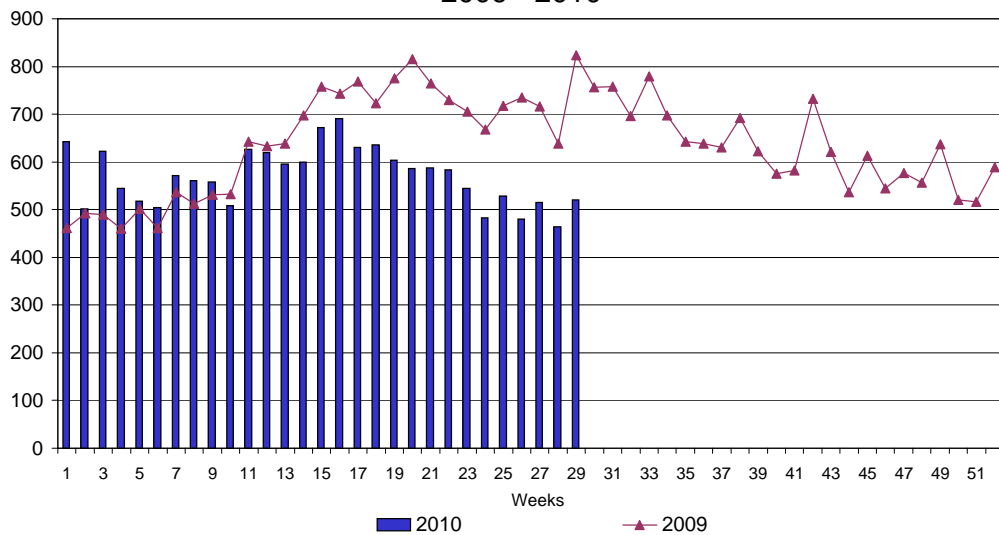
UI Claims Comparison Year to Date



UI Initial Claims 2008 - 2010



UI Exhaustions 2009 - 2010



TDI Claims Comparison Year to Date

