



## Rhode Island Department of Labor and Training

# *Weekly Update of Claims Activity*

*Week Ending: July 24, 2010*

### ***Unemployment Insurance***

**Initial Claims** – 1,321 initial claims were processed during the week ending 7/24/10, a decrease of 146 from the previous week, and a decrease of 837 from a year ago. The number of initial claims filed to date is down 20.8 percent below last year and up 9.8 percent from two years ago.

**Continued Claims** – 17,625 continued claims were processed during the week of 7/24/10, a decrease of 41 from the previous week and a decrease of 5,173 from a year ago. The number of continued claims filed to date is down 25.8 percent from a year ago and up 16.9 percent from two years ago.

**Workshare** – gives employers an alternative to layoffs by allowing employees to work reduced hours and collect a percentage of regular UI benefits to compensate for lost pay. This week, 455 initial claims and 2,169 continued claims were processed. An estimated 125 layoffs were prevented this week, as a result of Workshare.

**Emergency Unemployment Compensation 08** – EUC08, which became effective July 6, 2008, provides up to 53 weeks of federally funded benefits to eligible individuals who exhausted their UI claims. This week there were 56 new EUC08 claims processed and 8,413 continued claims processed (3,723 under tier I, 2,195 under tier II, 2,027 under tier III and 468 under tier IV). Individuals may establish initial eligibility for EUC08 benefits through June 2, 2010.

**Extended Benefits** – are payable to individuals who have exhausted UI or EUC08 claims. This week, 811 new EB claims and 8,672 continued EB claims were processed.

**Exhaustions** – 481 individuals exhausted their regular payments this week, a decrease of 39 from the previous week and a decrease 276 from a year ago. There were 36 individuals that exhausted EB.

### ***Temporary Disability Insurance***

**Temporary Disability Insurance** – 847 initial claims and 8,151 continued claims were processed for Temporary Disability Insurance. The average weekly TDI payment is \$436 per week. Rhode Island is currently paying an average of 10.8 weeks per new claim.

	Initial Claims	New Claims	Additional Claims	Continued Claims	Current Week	Previous Week	Year Ago	Two Years Ago
<b>Total - All programs*</b>	2,830	1,896	934	37,400	40,230	40,037	46,050	26,286
<b>UI Claims</b>	1,321	883	438	17,625	18,946	19,133	24,956	16,701
Change from:								
Previous Week	-146	-76	-70	-41	-187			
Year Ago	-837	-414	-423	-5,173	-6,010			
Two Years Ago	217	154	63	2,028	2,245			
<b>EUC08 Claims</b>	179	56	123	8,413	8,592	9,533	12,142	7,504
<b>Extended Benefits</b>	838	811	27	8,672	9,510	9,117	3,285	
<b>UI Exhaustions</b>	-			481	481	520	757	361
<b>EB Exhaustions</b>	-			36	36	53	179	
<b>Workshare</b>	455	124	331	2,169	2,624	1,708	4,859	1,232
<b>Workshare Equivalency</b>	125	40	85	707	832	537	1,277	459
<b>Interstate-Liable</b>	37	22	15	521	558	546	808	849
<b>TDI Claims</b>	847	711	136	8,151	8,998	9,133	8,807	10,250
Change from:								
Previous Week	11	14	-3	-146	-135			
Year Ago	-333	-276	-57	524	191			

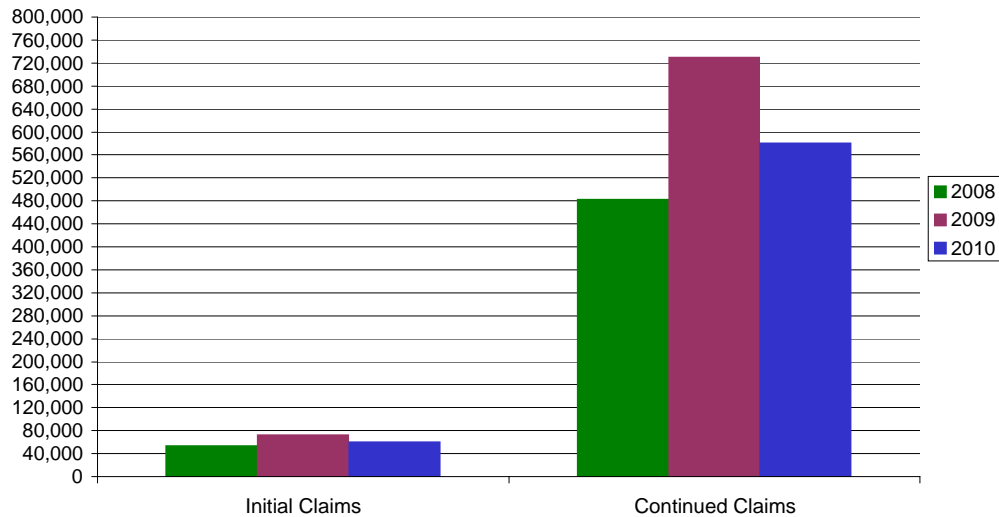
\* Includes UI, EUC08, EB, Workshare & Interstate Liable.

**a product of: Labor Market Information unit**

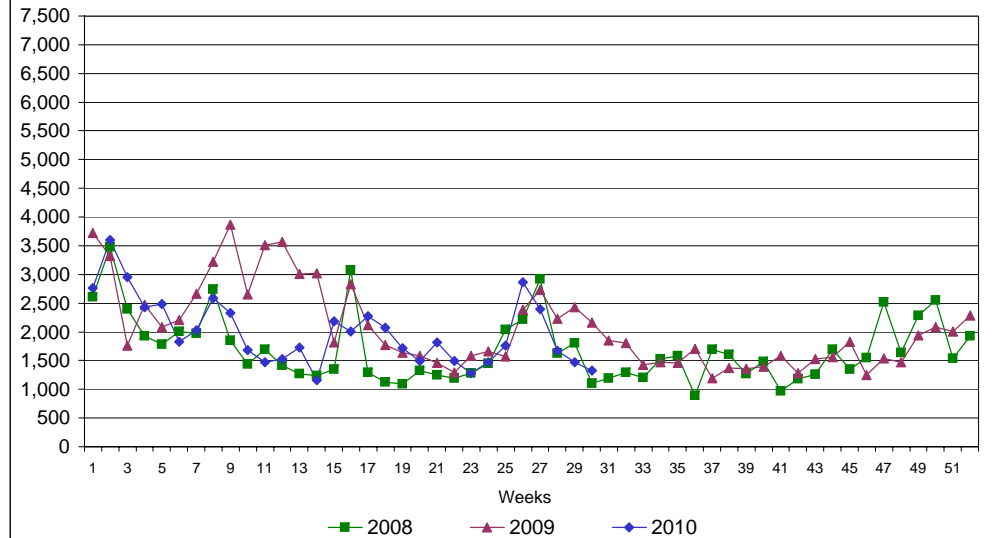
# Rhode Island Department of Labor and Training

## July 24, 2010

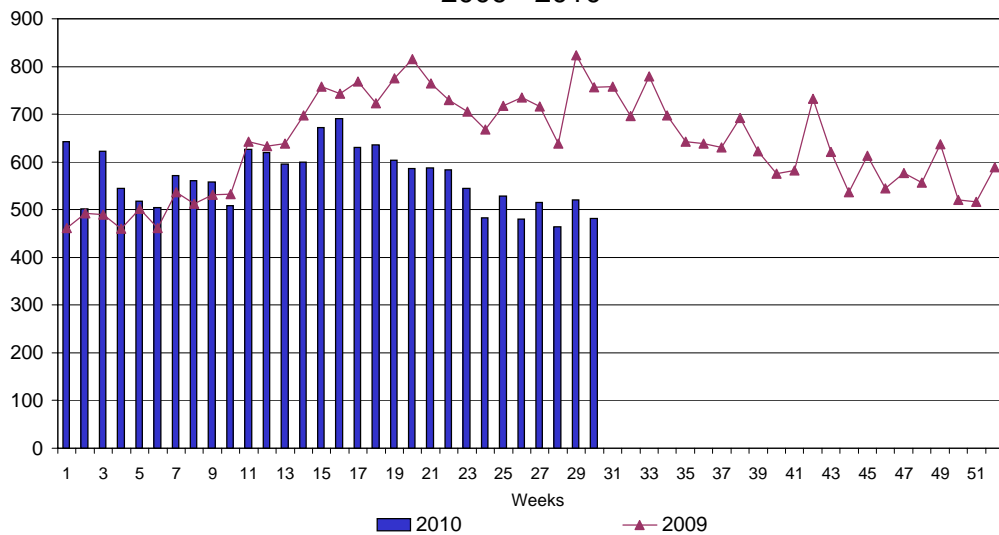
### UI Claims Comparison Year to Date



### UI Initial Claims 2008 - 2010



### UI Exhaustions 2009 - 2010



### TDI Claims Comparison Year to Date

