



Rhode Island Department of Labor and Training

Weekly Update of Claims Activity

Week Ending: July 31, 2010

Unemployment Insurance

Initial Claims – 1,276 initial claims were processed during the week ending 7/31/10, a decrease of 45 from the previous week, and a decrease of 571 from a year ago. The number of initial claims filed to date is down 21.3 percent below last year and up 9.7 percent from two years ago.

Continued Claims – 17,323 continued claims were processed during the week of 7/31/10, a decrease of 302 from the previous week and a decrease of 4,982 from a year ago. The number of continued claims filed to date is down 25.9 percent from a year ago and up 16.7 percent from two years ago.

Workshare – gives employers an alternative to layoffs by allowing employees to work reduced hours and collect a percentage of regular UI benefits to compensate for lost pay. This week, 418 initial claims and 1,578 continued claims were processed. An estimated 103 layoffs were prevented this week, as a result of Workshare.

Emergency Unemployment Compensation 08 – EUC08, which became effective July 6, 2008, provides up to 53 weeks of federally funded benefits to eligible individuals who exhausted their UI claims. This week there were 766 new EUC08 claims processed and 8,860 continued claims processed (3,758 under tier I, 2,272 under tier II, 2,085 under tier III and 745 under tier IV).

Extended Benefits – are payable to individuals who have exhausted UI or EUC08 claims. This week, 95 new EB claims and 9,068 continued EB claims were processed.

Exhaustions – 500 individuals exhausted their regular payments this week, an increase of 19 from the previous week and a decrease 258 from a year ago. There were 92 individuals that exhausted EUC08 and 48 individuals that exhausted EB.

Temporary Disability Insurance

Temporary Disability Insurance – 917 initial claims and 7,975 continued claims were processed for Temporary Disability Insurance. The average weekly TDI payment is \$431 per week. Rhode Island is currently paying an average of 10.7 weeks per new claim.

	Initial Claims	New Claims	Additional Claims	Continued Claims	Current Week	Previous Week	Year Ago	Two Years Ago
Total - All programs*	2,840	1,740	1,100	37,346	40,186	40,230	45,035	27,465
UI Claims	1,276	789	487	17,323	18,599	18,946	24,152	16,764
Change from:								
Previous Week	-45	-94	49	-302	-347			
Year Ago	-571	-304	-267	-4,982	-5,553			
Two Years Ago	89	158	-69	1,746	1,835			
EUC08 Claims	968	766	202	8,860	9,828	8,592	12,412	8,234
Extended Benefits	142	95	47	9,068	9,210	9,510	3,245	
UI Exhaustions	-			500	500	481	758	343
EUC08 Exhaustions	-			92	92	150	263	
EB Exhaustions	-			48	48	36	160	
Workshare	418	74	344	1,578	1,996	2,624	4,495	1,616
Workshare Equivalency	103	24	79	418	521	832	1,096	426
Interstate-Liable	36	16	20	517	553	558	731	851
TDI Claims	917	767	150	7,975	8,892	8,998	8,778	10,754
Change from:								
Previous Week	70	56	14	-176	-106			
Year Ago	209	181	28	-95	114			

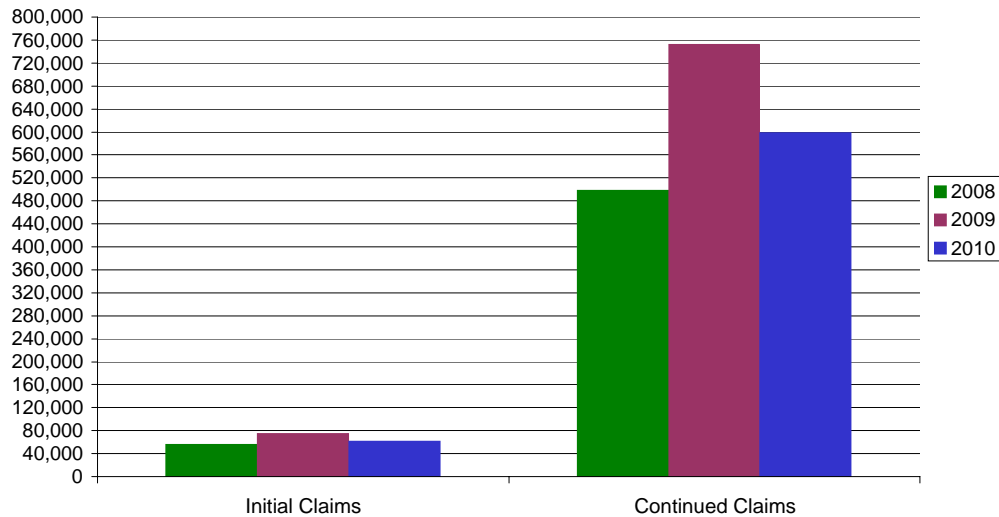
* Includes UI, EUC08, EB, Workshare & Interstate Liable.

a product of: Labor Market Information unit

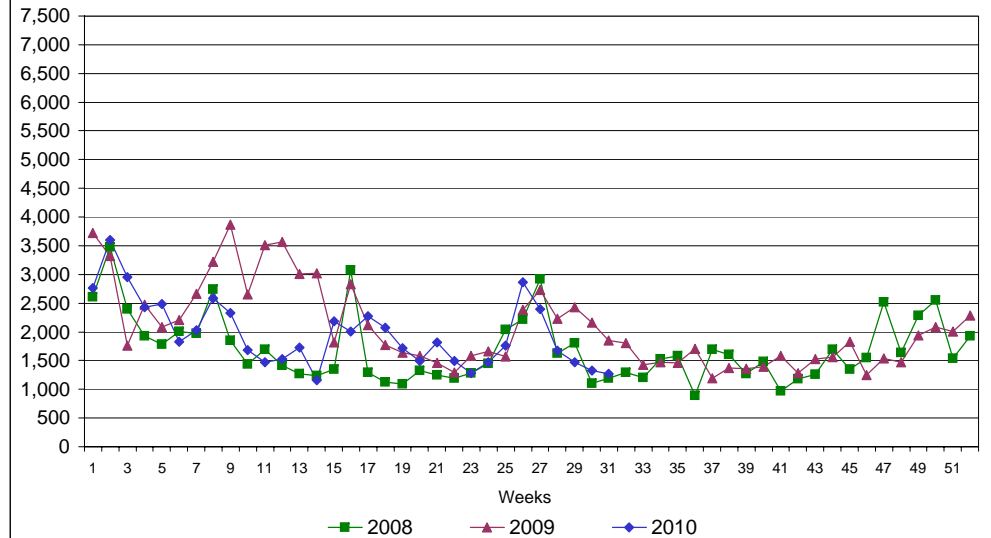
Rhode Island Department of Labor and Training

July 31, 2010

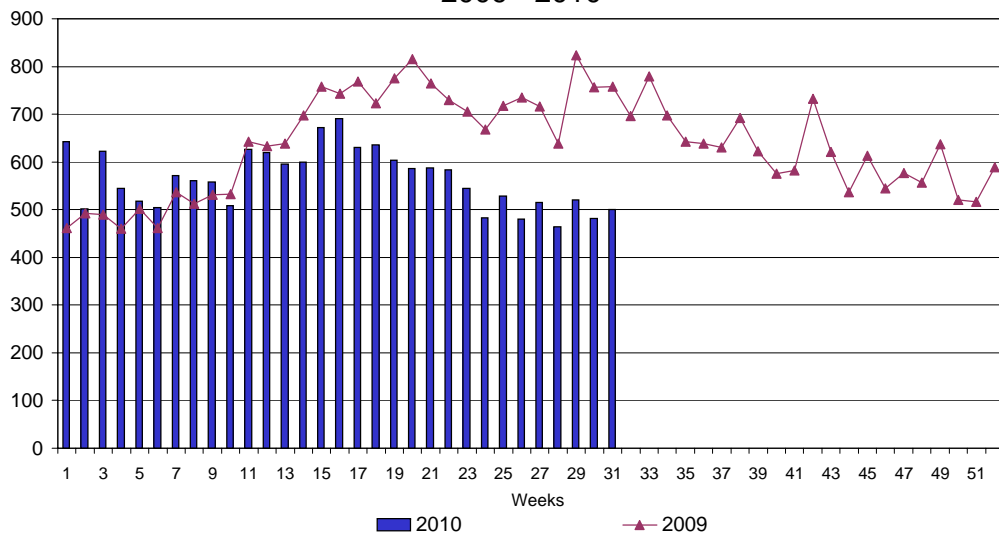
UI Claims Comparison Year to Date



UI Initial Claims 2008 - 2010



UI Exhaustions 2009 - 2010



TDI Claims Comparison Year to Date

