



Rhode Island Department of Labor and Training

Weekly Update of Claims Activity

Week Ending: August 14, 2010

Unemployment Insurance

Initial Claims – 1,363 initial claims were processed during the week ending 8/14/10, a decrease of 1 from the previous week, and a decrease of 59 from a year ago. The number of initial claims filed to date is down 21.2 percent below last year and up 9.7 percent from two years ago.

Continued Claims – 16,651 continued claims were processed during the week of 8/14/10, a decrease of 271 from the previous week and a decrease of 4,382 from a year ago. The number of continued claims filed to date is down 25.9 percent from a year ago and up 16.4 percent from two years ago.

Workshare – gives employers an alternative to layoffs by allowing employees to work reduced hours and collect a percentage of regular UI benefits to compensate for lost pay. This week, 43 initial claims and 1,267 continued claims were processed. An estimated 10 layoffs were prevented this week, as a result of Workshare.

Emergency Unemployment Compensation 08 – EUC08, which became effective July 6, 2008, provides up to 53 weeks of federally funded benefits to eligible individuals who exhausted their UI claims. This week there were 479 new EUC08 claims processed and 9,511 continued claims processed (3,842 under tier I, 2,350 under tier II, 2,111 under tier III and 1,208 under tier IV).

Extended Benefits – are payable to individuals who have exhausted UI or EUC08 claims. This week, 37 new EB claims and 8,815 continued EB claims were processed.

Exhaustions – 465 individuals exhausted their regular payments this week, an increase of 2 from the previous week and a decrease 314 from a year ago. There were 109 individuals that exhausted EUC08 and 74 individuals that exhausted EB.

Temporary Disability Insurance

Temporary Disability Insurance – 565 initial claims and 7,499 continued claims were processed for Temporary Disability Insurance. The average weekly TDI payment is \$434 per week. Rhode Island is currently paying an average of 10.9 weeks per new claim.

	Initial Claims	New Claims	Additional Claims	Continued Claims	Current Week	Previous Week	Year Ago	Two Years Ago
Total - All programs*	2,164	1,330	834	36,853	39,017	40,501	42,979	26,731
UI Claims	1,363	784	579	16,651	18,014	18,286	22,455	16,191
Change from:								
Previous Week	-1	-58	57	-271	-272			
Year Ago	-59	19	-78	-4,382	-4,441			
Two Years Ago	163	94	69	1,660	1,823			
EUC08 Claims	650	479	171	9,511	10,161	10,134	12,976	7,876
Extended Benefits	71	37	34	8,815	8,886	9,033	3,319	
UI Exhaustions	-			465	465	463	779	415
EUC08 Exhaustions	-			109	109	103	255	2
EB Exhaustions	-			74	74	63	142	
Workshare	43	5	38	1,267	1,310	2,458	3,543	1,836
Workshare Equivalency	10	1	9	319	329	667	890	440
Interstate-Liable	37	25	12	609	646	590	686	828
TDI Claims	565	471	94	7,499	8,064	8,623	7,912	10,372
Change from:								
Previous Week	-72	-55	-17	-487	-559			
Year Ago	141	118	23	11	152			

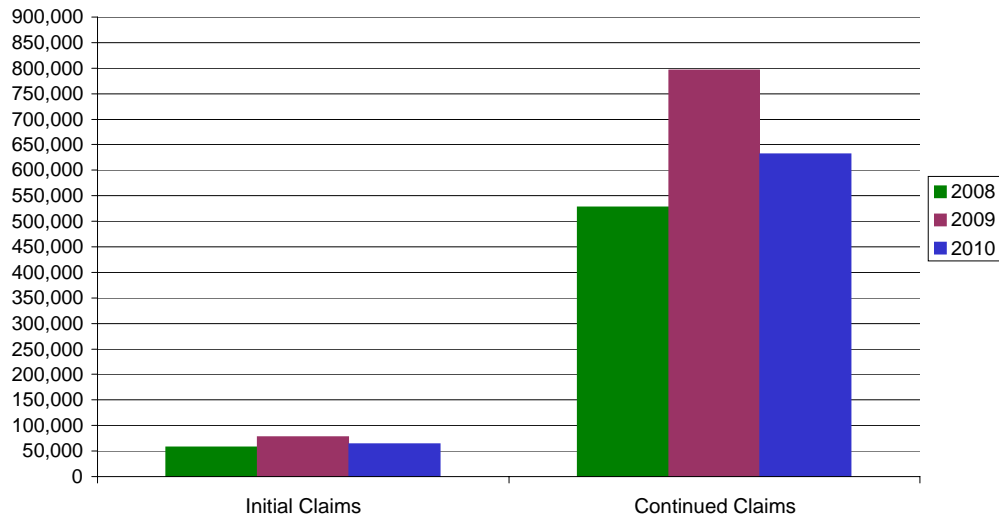
* Includes UI, EUC08, EB, Workshare & Interstate Liable.

a product of: Labor Market Information unit

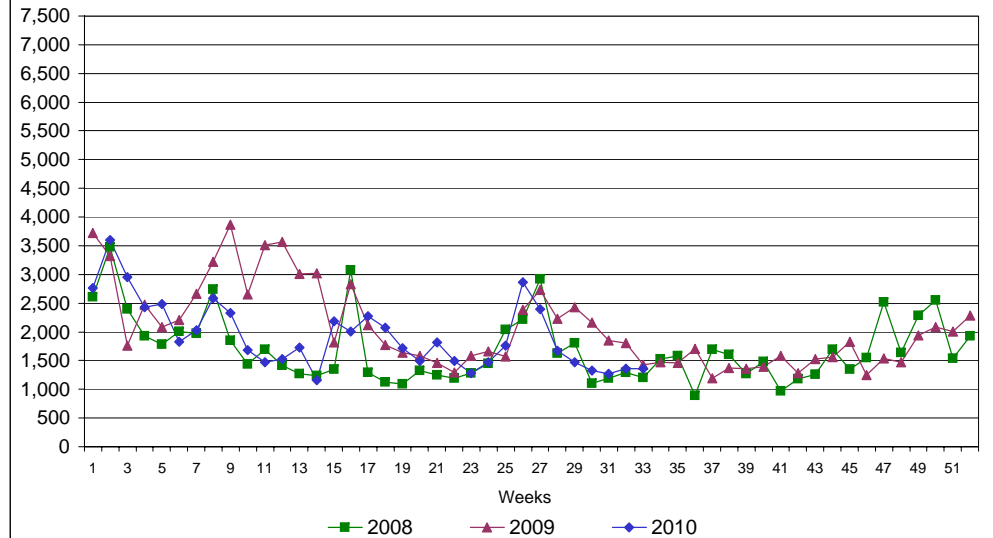
Rhode Island Department of Labor and Training

August 14, 2010

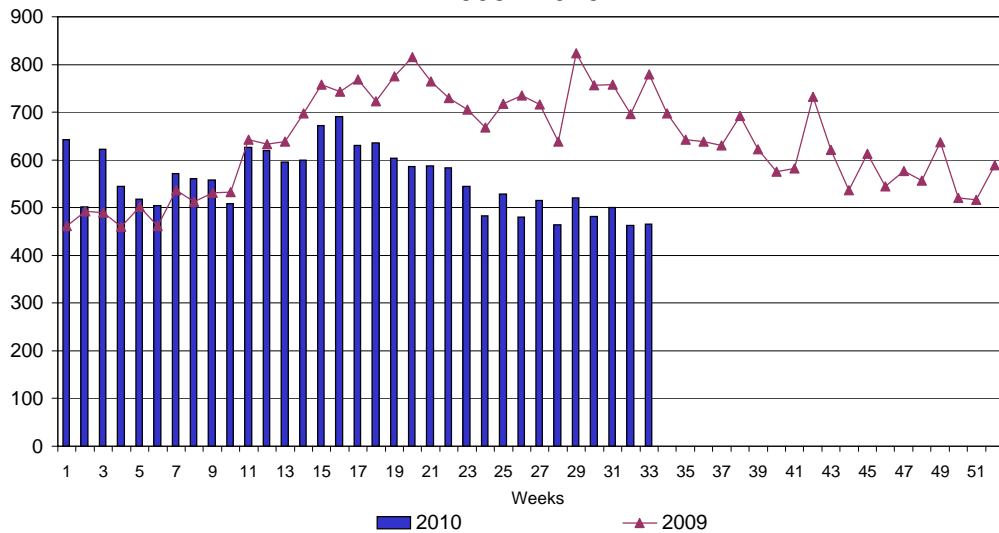
UI Claims Comparison Year to Date



UI Initial Claims 2008 - 2010



UI Exhaustions 2009 - 2010



TDI Claims Comparison Year to Date

