



Rhode Island Department of Labor and Training

Weekly Update of Claims Activity

Week Ending: August 28, 2010

Unemployment Insurance

Initial Claims – 1,350 initial claims were processed during the week ending 8/28/10, an increase 38 from the previous week, and a decrease of 109 from a year ago. The number of initial claims filed to date is down 20.8 percent below last year and up 8.6 percent from two years ago.

Continued Claims – 16,787 continued claims were processed during the week of 8/28/10, a decrease of 138 from the previous week and a decrease of 3,700 from a year ago. The number of continued claims filed to date is down 25.8 percent from a year ago and up 16.0 percent from two years ago.

Workshare – gives employers an alternative to layoffs by allowing employees to work reduced hours and collect a percentage of regular UI benefits to compensate for lost pay. This week, 195 initial claims and 1,753 continued claims were processed. An estimated 49 layoffs were prevented this week, as a result of Workshare.

Emergency Unemployment Compensation 08 – EUC08, which became effective July 6, 2008, provides up to 53 weeks of federally funded benefits to eligible individuals who exhausted their UI claims. This week there were 502 new EUC08 claims processed and 9,967 continued claims processed (4,065 under tier I, 2,401 under tier II, 2,042 under tier III and 1,459 under tier IV).

Extended Benefits – are payable to individuals who have exhausted UI or EUC08 claims. This week, 75 new EB claims and 8,494 continued EB claims were processed.

Exhaustions – 473 individuals exhausted their regular payments this week, a decrease of 7 from the previous week and a decrease 169 from a year ago. There were 151 individuals that exhausted EUC08 and 183 individuals that exhausted EB.

Temporary Disability Insurance

Temporary Disability Insurance – 985 initial claims and 8,045 continued claims were processed for Temporary Disability Insurance. The average weekly TDI payment is \$427 per week. Rhode Island is currently paying an average of 10.9 weeks per new claim.

	Initial Claims	New Claims	Additional Claims	Continued Claims	Current Week	Previous Week	Year Ago	Two Years Ago
Total - All programs*	2,420	1,397	1,023	37,517	39,937	40,103	43,701	27,441
UI Claims	1,350	763	587	16,787	18,137	18,237	21,946	17,047
Change from:								
Previous Week	38	-33	71	-138	-100			
Year Ago	-109	-9	-100	-3,700	-3,809			
Two Years Ago	-234	-226	-8	1,324	1,090			
EUC08 Claims	706	502	204	9,967	10,673	10,446	13,461	7,722
Extended Benefits	126	75	51	8,494	8,620	8,753	3,329	63
UI Exhaustions	-			473	473	480	642	362
EUC08 Exhaustions	-			151	151	136	240	334
EB Exhaustions	-			183	183	142	140	
Workshare	195	39	156	1,753	1,948	2,130	4,198	1,719
Workshare Equivalency	49	11	38	548	597	562	973	442
Interstate-Liable	43	18	25	516	559	537	767	890
TDI Claims	985	826	159	8,045	9,030	8,946	9,935	10,844
Change from:								
Previous Week	110	95	15	-26	84			
Year Ago	-245	-174	-71	-660	-905			

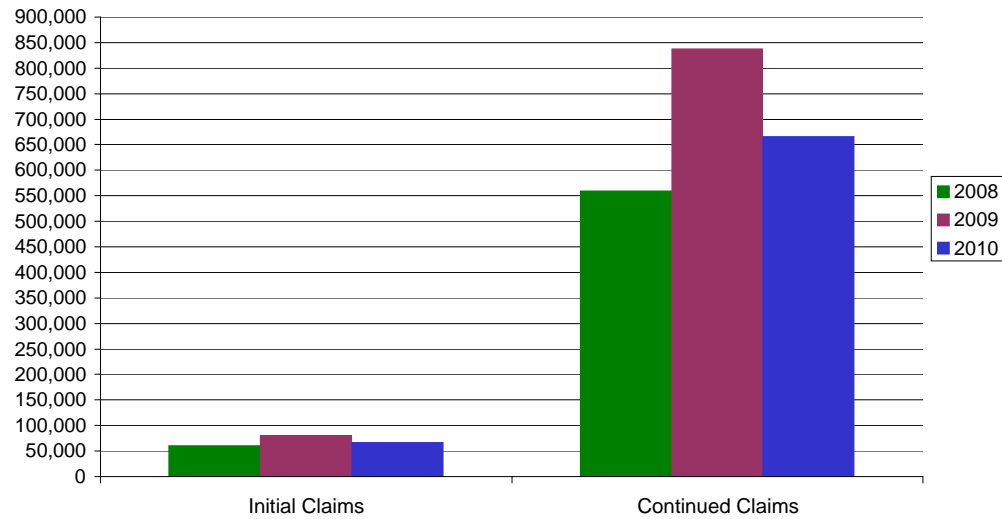
* Includes UI, EUC08, EB, Workshare & Interstate Liable.

a product of: Labor Market Information unit

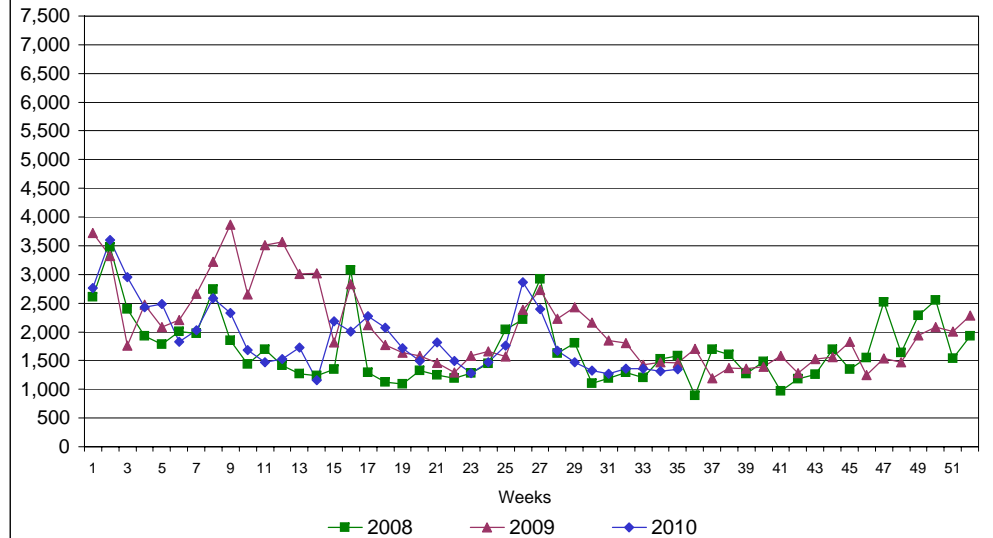
Rhode Island Department of Labor and Training

August 28, 2010

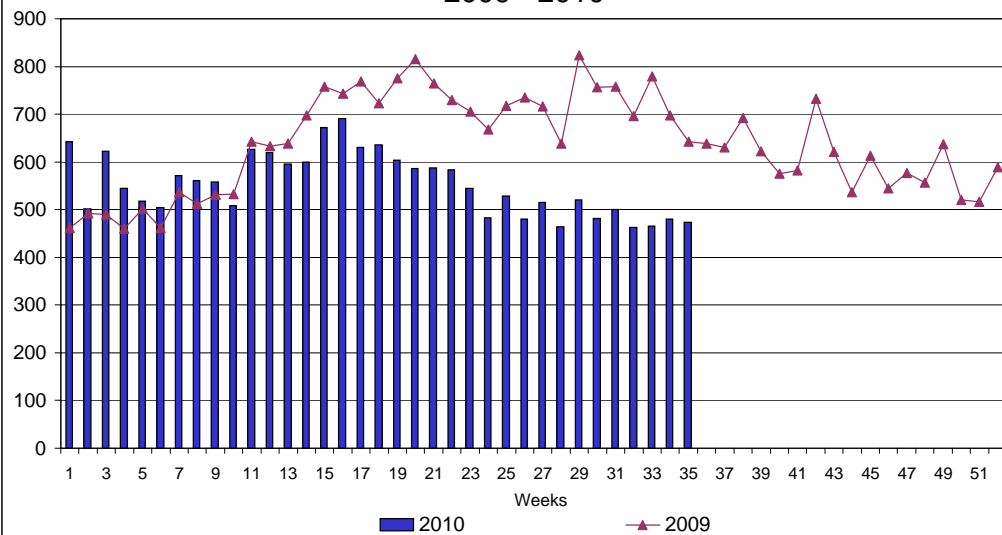
UI Claims Comparison Year to Date



UI Initial Claims 2008 - 2010



UI Exhaustions 2009 - 2010



TDI Claims Comparison Year to Date

