



Rhode Island Department of Labor and Training

Weekly Update of Claims Activity

Week Ending: September 3, 2011

Unemployment Insurance

Initial Claims – 1,678 initial claims were processed during the week ending 9/3/11, an increase of 195 from the previous week, and an increase of 445 from a year ago. The number of initial claims filed to date is down 5.4 percent from last year and down 21.8 percent from two years ago.

Continued Claims – 14,602 continued claims were processed during the week of 9/3/11, a decrease of 1,170 from the previous week and a decrease of 1,847 from a year ago. The number of continued claims filed to date is down 9.8 percent from a year ago and down 28.3 percent from two years ago.

Workshare – gives employers an alternative to layoffs by allowing employees to work reduced hours and collect a percentage of regular UI benefits to compensate for lost pay. This week, 140 initial claims and 863 continued claims were processed. An estimated 35 layoffs were prevented this week, as a result of Workshare.

Emergency Unemployment Compensation 08 – EUC08, which became effective July 6, 2008, provides up to 53 weeks of federally funded benefits to eligible individuals who exhausted their UI claims. This week there were 364 new EUC08 claims processed and 13,304 continued claims processed (5,534 under tier I, 3,445 under tier II, 2,999 under tier III and 1,326 under tier IV).

Extended Benefits – are payable to individuals who have exhausted UI or EUC08 claims. This week, 103 new EB claims and 1,349 continued EB claims were processed.

Exhaustions – 372 individuals exhausted their regular payments this week, a decrease of 87 from the previous week and a decrease of 90 from a year ago. There were 209 individuals that exhausted EUC08 and 94 individuals that exhausted EB.

Temporary Disability Insurance

Temporary Disability Insurance – 765 initial claims and 8,103 continued claims were processed for Temporary Disability Insurance. The average weekly TDI payment is \$436 per week. Rhode Island is currently paying an average of 10.7 weeks per new claim.

	Initial Claims			Continued Claims	TOTAL - Initial and Continued Claims			
	Total	New	Additional		Current Week	Previous Week	Year Ago	Two Years Ago
Total - All programs*	2,554	1,609	945	30,583	33,137	35,036	39,679	44,631
UI Claims	1,678	1,016	662	14,602	16,280	17,255	17,682	22,455
Change from:								
Previous Week	195	59	136	-1,170	-975			
Year Ago	445	257	188	-1,847	-1,402			
Two Years Ago	-27	116	-143	-6,148	-6,175			
EUC08 Claims	592	364	228	13,304	13,896	14,068	10,958	13,566
Extended Benefits	111	103	8	1,349	1,460	1,462	8,468	3,291
Interstate-Liable	33	21	12	465	498	478	618	848
Workshare	140	105	35	863	1,003	1,773	1,953	4,471
Workshare Equivalency	35	26	9	224	259	298	548	1,071
UI Exhaustions	-	-	-	372	372	459	462	638
EUC08 Exhaustions	-	-	-	209	209	215	229	273
EB Exhaustions	-	-	-	94	94	95	231	329
TDI Claims	765	636	129	8,103	8,868	9,004	9,124	9,501
Change from:								
Previous Week	-75	-57	-18	-61	-136			
Year Ago	-153	-135	-18	-103	-256			

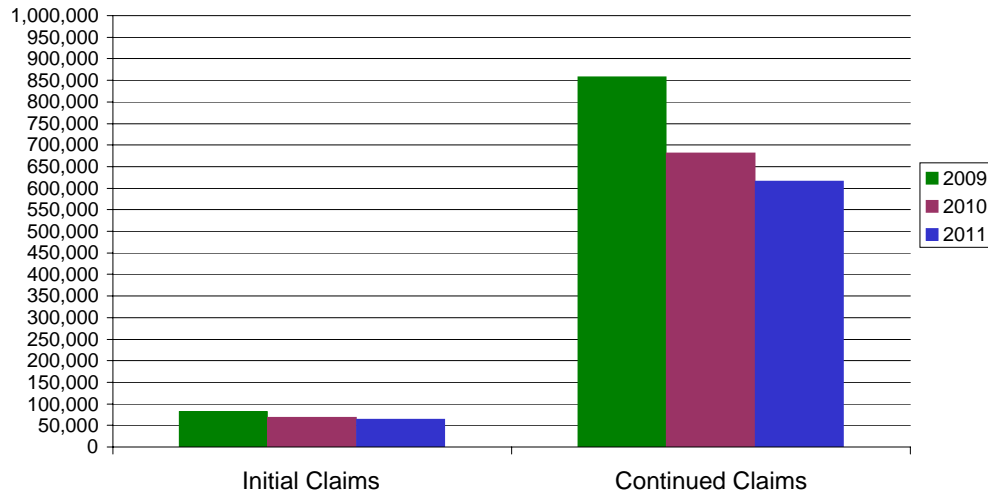
* Includes UI, EUC08, EB, Workshare & Interstate Liable.

Equal Opportunity Employer / Program / Auxiliary aids and services available upon request to individuals with disabilities / TTY via RI Relay 711.

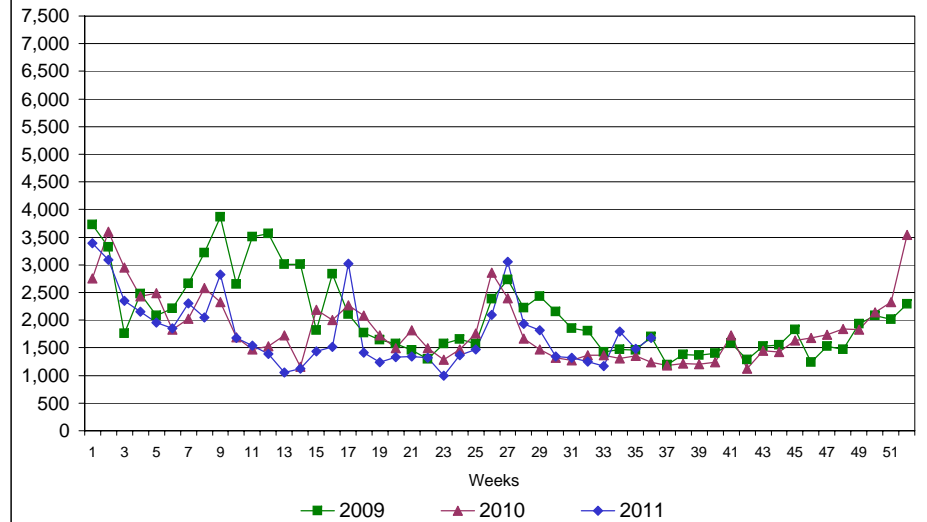
Rhode Island Department of Labor and Training

September 3, 2011

UI Claims Comparison Year to Date



UI Initial Claims 2009 - 2011



UI Exhaustions 2010 - 2011



TDI Claims Comparison Year to Date

