



Rhode Island Department of Labor and Training

Weekly Update of Claims Activity

Week Ending: September 17, 2011

Unemployment Insurance

Initial Claims – 1,713 initial claims were processed during the week ending 9/17/11, an increase of 34 from the previous week, and an increase of 497 from a year ago. The number of initial claims filed to date is down 3.8 percent from last year and down 20.2 percent from two years ago.

Continued Claims – 12,699 continued claims were processed during the week of 9/17/11, a decrease of 1,377 from the previous week and a decrease of 1,271 from a year ago. The number of continued claims filed to date is down 9.6 percent from a year ago and down 28.0 percent from two years ago.

Workshare – gives employers an alternative to layoffs by allowing employees to work reduced hours and collect a percentage of regular UI benefits to compensate for lost pay. This week, 57 initial claims and 1,273 continued claims were processed. An estimated 13 layoffs were prevented this week, as a result of Workshare.

Emergency Unemployment Compensation 08 – EUC08, which became effective July 6, 2008, provides up to 53 weeks of federally funded benefits to eligible individuals who exhausted their UI claims. This week there were 421 new EUC08 claims processed and 13,281 continued claims processed (5,495 under tier I, 3,462 under tier II, 3,030 under tier III and 1,294 under tier IV).

Extended Benefits – are payable to individuals who have exhausted UI or EUC08 claims. This week, 145 new EB claims and 1,433 continued EB claims were processed.

Exhaustions – 394 individuals exhausted their regular payments this week, a decrease of 29 from the previous week and a decrease of 25 from a year ago. There were 245 individuals that exhausted EUC08 and 53 individuals that exhausted EB.

Temporary Disability Insurance

Temporary Disability Insurance – 817 initial claims and 7,458 continued claims were processed for Temporary Disability Insurance. The average weekly TDI payment is \$435 per week. Rhode Island is currently paying an average of 10.8 weeks per new claim.

	Initial Claims			Continued Claims	TOTAL - Initial and Continued Claims			
	Total	New	Additional		Current Week	Previous Week	Year Ago	Two Years Ago
Total - All programs*	2,615	1,745	870	29,136	31,751	32,595	37,137	40,454
UI Claims	1,713	1,110	603	12,699	14,412	15,755	15,186	18,385
Change from:								
Previous Week	34	213	-179	-1,377	-1,343			
Year Ago	497	355	142	-1,271	-774			
Two Years Ago	337	362	-25	-4,310	-3,973			
EUC08 Claims	643	421	222	13,281	13,924	13,753	11,177	13,699
Extended Benefits	159	145	14	1,433	1,592	1,448	8,014	3,080
Interstate-Liable	43	23	20	450	493	444	586	692
Workshare	57	46	11	1,273	1,330	1,195	2,174	4,598
Workshare Equivalency	13	10	3	371	384	314	547	1,168
UI Exhaustions	-	-	-	394	394	423	419	692
EUC08 Exhaustions	-	-	-	245	245	283	262	260
EB Exhaustions	-	-	-	53	53	43	342	153
TDI Claims	817	669	148	7,458	8,275	7,633	9,502	8,659
Change from:								
Previous Week	163	128	35	479	642			
Year Ago	-79	-75	-4	-1,148	-1,227			

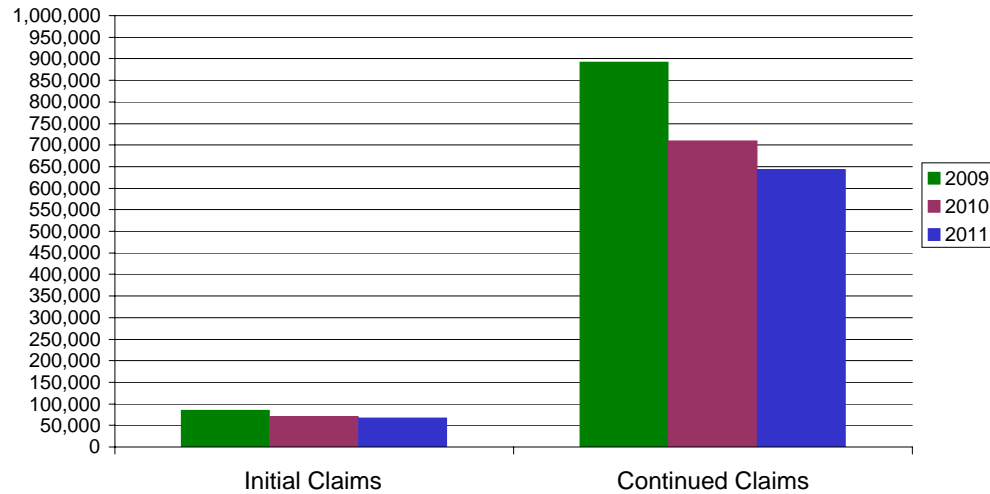
* Includes UI, EUC08, EB, Workshare & Interstate Liable.

Equal Opportunity Employer / Program / Auxiliary aids and services available upon request to individuals with disabilities / TTY via RI Relay 711.

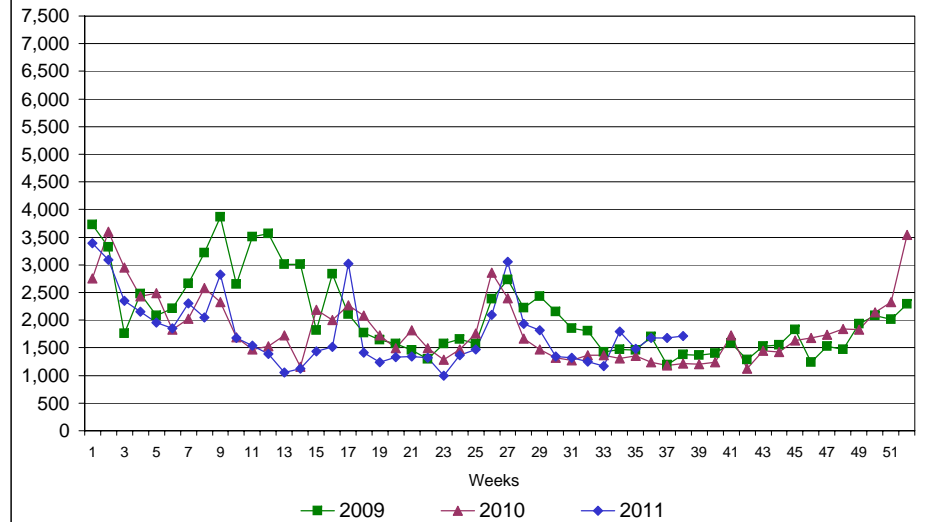
Rhode Island Department of Labor and Training

September 17, 2011

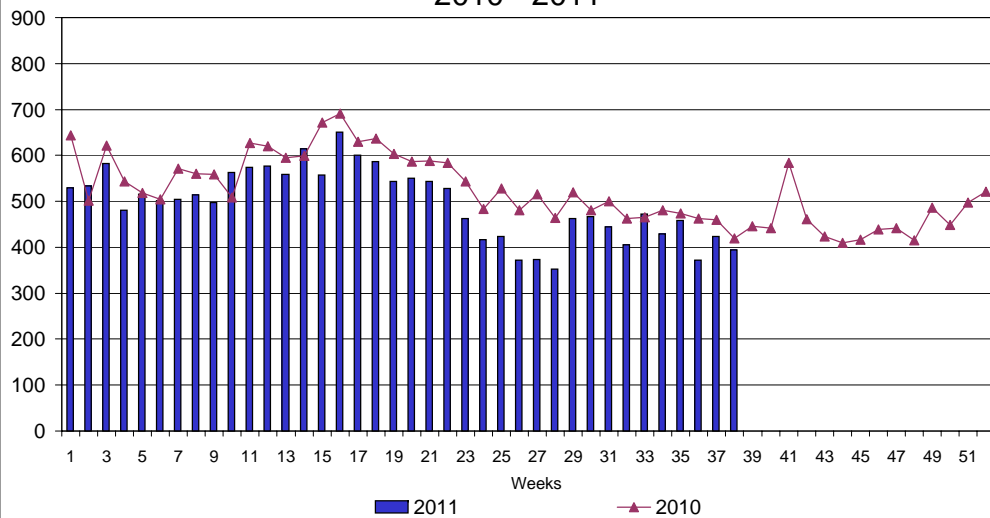
UI Claims Comparison Year to Date



UI Initial Claims 2009 - 2011



UI Exhaustions 2010 - 2011



TDI Claims Comparison Year to Date

