



Rhode Island Department of Labor and Training

Weekly Update of Claims Activity

Week Ending: October 1, 2011

Unemployment Insurance

Initial Claims – 1,435 initial claims were processed during the week ending 10/1/11, an increase of 175 from the previous week, and an increase of 196 from a year ago. The number of initial claims filed to date is down 3.3 percent from last year and down 19.6 percent from two years ago.

Continued Claims – 11,851 continued claims were processed during the week of 10/1/11, a decrease of 49 from the previous week and a decrease of 992 from a year ago. The number of continued claims filed to date is down 9.6 percent from a year ago and down 28.0 percent from two years ago.

Workshare – gives employers an alternative to layoffs by allowing employees to work reduced hours and collect a percentage of regular UI benefits to compensate for lost pay. This week, 25 initial claims and 997 continued claims were processed. An estimated 6 layoffs were prevented this week, as a result of Workshare.

Emergency Unemployment Compensation 08 – EUC08, which became effective July 6, 2008, provides up to 53 weeks of federally funded benefits to eligible individuals who exhausted their UI claims. This week there were 355 new EUC08 claims processed and 13,154 continued claims processed (5,285 under tier I, 3,546 under tier II, 3,001 under tier III and 1,322 under tier IV).

Extended Benefits – are payable to individuals who have exhausted UI or EUC08 claims. This week, 151 new EB claims and 1,520 continued EB claims were processed.

Exhaustions – 371 individuals exhausted their regular payments this week, a decrease of 41 from the previous week and a decrease of 71 from a year ago. There were 241 individuals that exhausted EUC08 and 95 individuals that exhausted EB.

Temporary Disability Insurance

Temporary Disability Insurance – 859 initial claims and 6,936 continued claims were processed for Temporary Disability Insurance. The average weekly TDI payment is \$430 per week. Rhode Island is currently paying an average of 10.7 weeks per new claim.

	Initial Claims			Continued Claims	TOTAL - Initial and Continued Claims			
	Total	New	Additional		Current Week	Previous Week	Year Ago	Two Years Ago
Total - All programs*	2,261	1,466	795	28,001	30,262	29,991	35,677	39,495
UI Claims	1,435	909	526	11,851	13,286	13,160	14,082	17,421
Change from:								
Previous Week	175	128	47	-49	126			
Year Ago	196	189	7	-992	-796			
Two Years Ago	39	84	-45	-4,174	-4,135			
EUC08 Claims	581	355	226	13,154	13,735	13,752	11,573	14,024
Extended Benefits	167	151	16	1,520	1,687	1,656	7,391	3,142
Interstate-Liable	53	33	20	479	532	503	546	684
Workshare	25	18	7	997	1,022	920	2,085	4,224
Workshare Equivalency	6	4	2	266	272	250	517	1,033
UI Exhaustions	-	-	-	371	371	412	442	576
EUC08 Exhaustions	-	-	-	241	241	234	243	286
EB Exhaustions	-	-	-	95	95	90	354	135
TDI Claims	859	718	141	6,936	7,795	8,643	9,084	7,773
Change from:								
Previous Week	-117	-90	-27	-731	-848			
Year Ago	-57	-17	-40	-1,232	-1,289			

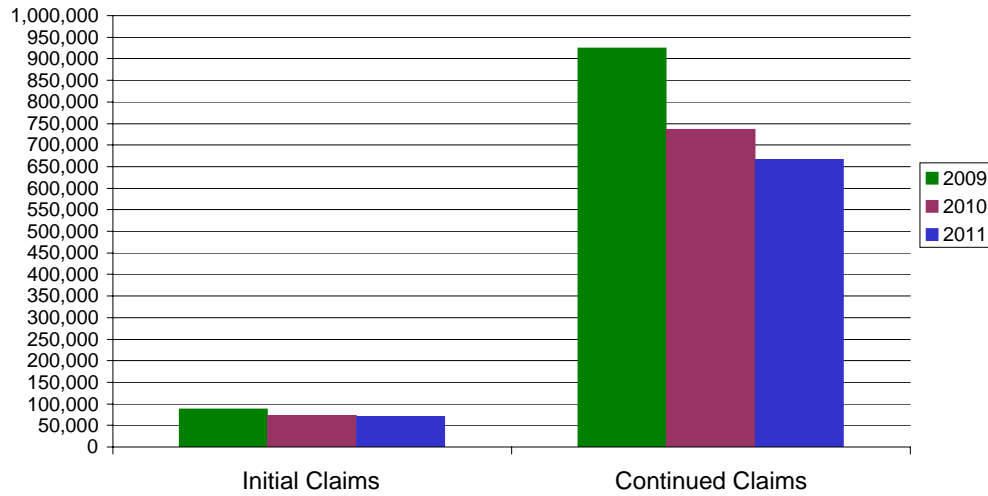
* Includes UI, EUC08, EB, Workshare & Interstate Liable.

Equal Opportunity Employer / Program / Auxiliary aids and services available upon request to individuals with disabilities / TTY via RI Relay 711.

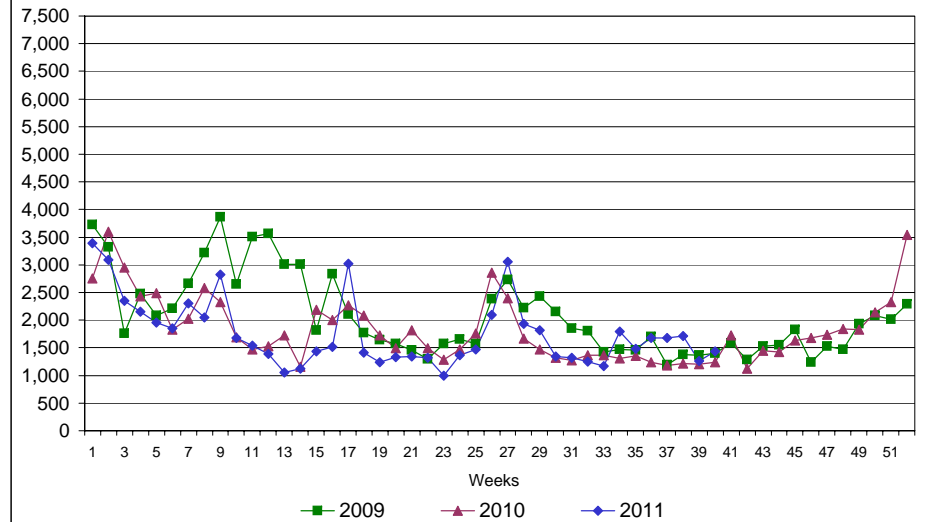
Rhode Island Department of Labor and Training

October 1, 2011

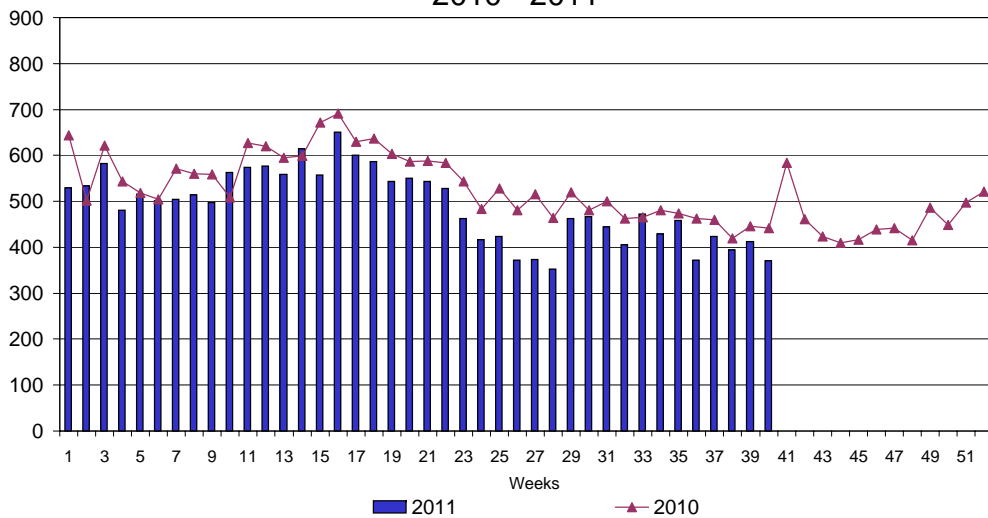
UI Claims Comparison Year to Date



UI Initial Claims 2009 - 2011



UI Exhaustions 2010 - 2011



TDI Claims Comparison Year to Date

