



Rhode Island Department of Labor and Training

Weekly Update of Claims Activity

Week Ending: October 8, 2011

Unemployment Insurance

Initial Claims – 1,710 initial claims were processed during the week ending 10/8/11, an increase of 275 from the previous week, and a decrease of 10 from a year ago. The number of initial claims filed to date is down 3.2 percent from last year and down 19.1 percent from two years ago.

Continued Claims – 11,644 continued claims were processed during the week of 10/8/11, a decrease of 207 from the previous week and a decrease of 1,301 from a year ago. The number of continued claims filed to date is down 9.6 percent from a year ago and down 28.0 percent from two years ago.

Workshare – gives employers an alternative to layoffs by allowing employees to work reduced hours and collect a percentage of regular UI benefits to compensate for lost pay. This week, 40 initial claims and 956 continued claims were processed. An estimated 9 layoffs were prevented this week, as a result of Workshare.

Emergency Unemployment Compensation 08 – EUC08, which became effective July 6, 2008, provides up to 53 weeks of federally funded benefits to eligible individuals who exhausted their UI claims. This week there were 313 new EUC08 claims processed and 12,985 continued claims processed (5,235 under tier I, 3,491 under tier II, 2,951 under tier III and 1,308 under tier IV).

Extended Benefits – are payable to individuals who have exhausted UI or EUC08 claims. This week, 109 new EB claims and 1,554 continued EB claims were processed.

Exhaustions – 340 individuals exhausted their regular payments this week, a decrease of 31 from the previous week and a decrease of 244 from a year ago. There were 216 individuals that exhausted EUC08 and 114 individuals that exhausted EB.

Temporary Disability Insurance

Temporary Disability Insurance – 750 initial claims and 7,723 continued claims were processed for Temporary Disability Insurance. The average weekly TDI payment is \$442 per week. Rhode Island is currently paying an average of 10.7 weeks per new claim.

	Initial Claims			Continued Claims	TOTAL - Initial and Continued Claims			
	Total	New	Additional		Current Week	Previous Week	Year Ago	Two Years Ago
Total - All programs*	2,431	1,653	778	27,563	29,994	30,262	35,990	38,011
UI Claims	1,710	1,173	537	11,644	13,354	13,286	14,665	16,946
Change from:								
Previous Week	275	264	11	-207	68			
Year Ago	-10	32	-42	-1,301	-1,311			
Two Years Ago	129	225	-96	-3,721	-3,592			
EUC08 Claims	516	313	203	12,985	13,501	13,735	11,763	14,003
Extended Benefits	116	109	7	1,554	1,670	1,687	7,131	3,112
Interstate-Liable	49	35	14	424	473	532	543	693
Workshare	40	23	17	956	996	1,022	1,888	3,257
Workshare Equivalency	9	5	4	249	258	272	416	772
UI Exhaustions	-	-	-	340	340	371	584	582
EUC08 Exhaustions	-	-	-	216	216	241	236	254
EB Exhaustions	-	-	-	114	114	95	376	158
TDI Claims	750	621	129	7,723	8,473	7,795	9,201	9,209
Change from:								
Previous Week	-109	-97	-12	787	678			
Year Ago	-38	-31	-7	-690	-728			

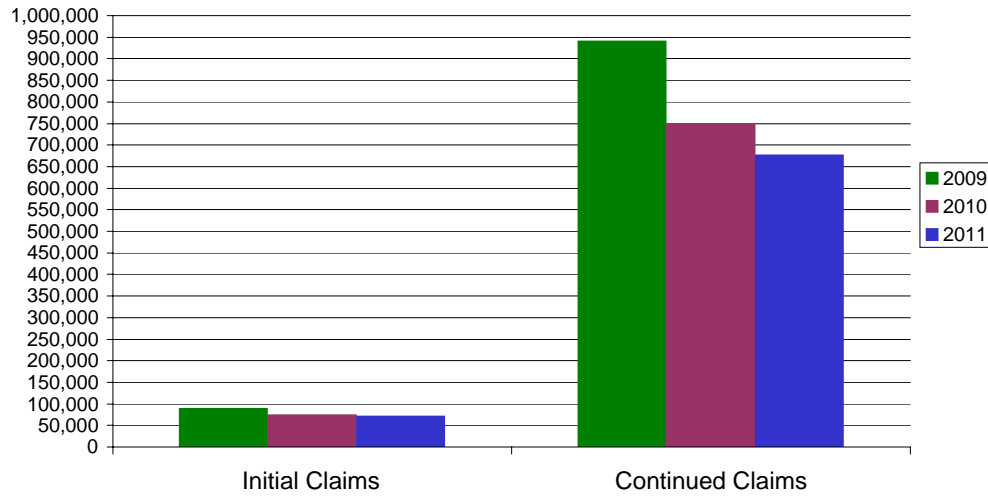
* Includes UI, EUC08, EB, Workshare & Interstate Liable.

Equal Opportunity Employer / Program / Auxiliary aids and services available upon request to individuals with disabilities / TTY via RI Relay 711.

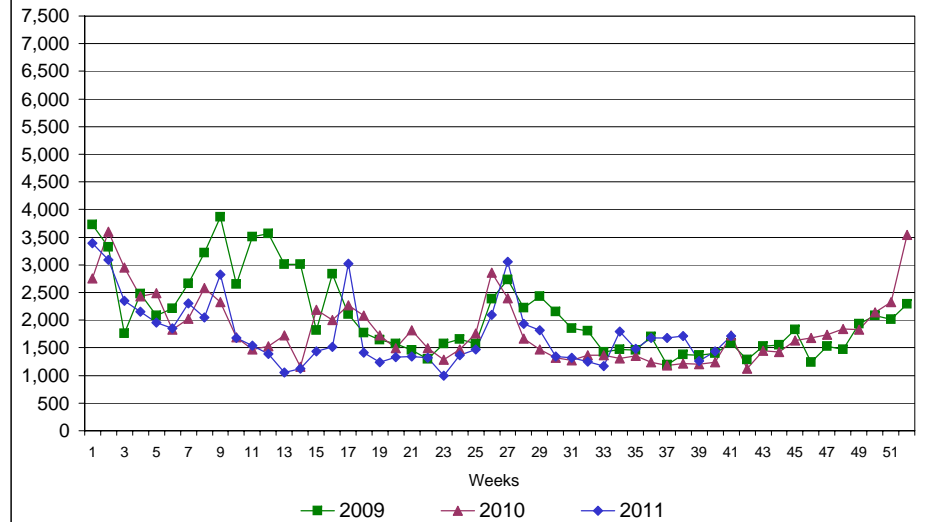
Rhode Island Department of Labor and Training

October 8, 2011

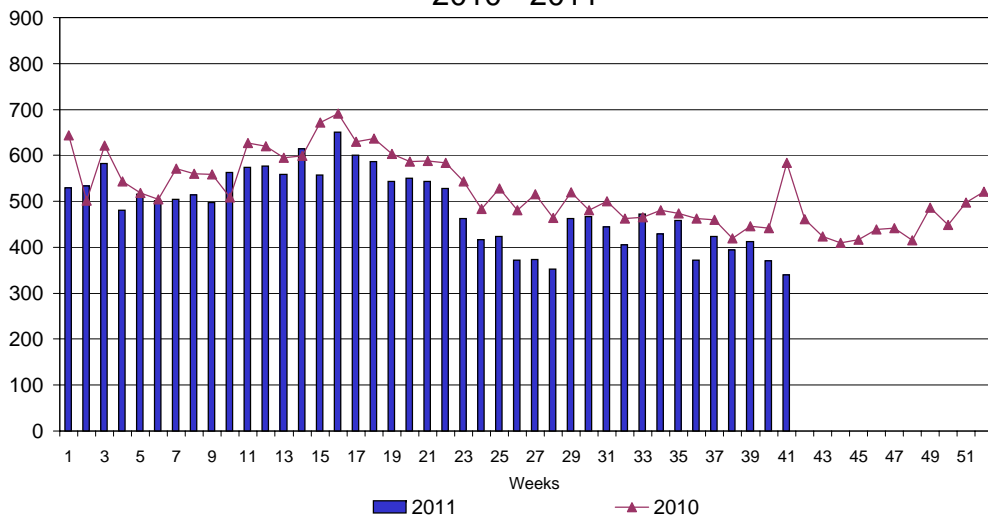
UI Claims Comparison Year to Date



UI Initial Claims 2009 - 2011



UI Exhaustions 2010 - 2011



TDI Claims Comparison Year to Date

