



Rhode Island Department of Labor and Training

Weekly Update of Claims Activity

Week Ending: October 29, 2011

Unemployment Insurance

Initial Claims – 1,435 initial claims were processed during the week ending 10/29/11, a decrease of 3 from the previous week, and an increase of 17 from a year ago. The number of initial claims filed to date is down 2.8 percent from last year and down 18.4 percent from two years ago.

Continued Claims – 12,022 continued claims were processed during the week of 10/29/11, an increase of 272 from the previous week and a decrease of 1,348 from a year ago. The number of continued claims filed to date is down 9.6 percent from a year ago and down 27.7 percent from two years ago.

Workshare – gives employers an alternative to layoffs by allowing employees to work reduced hours and collect a percentage of regular UI benefits to compensate for lost pay. This week, 88 initial claims and 763 continued claims were processed. An estimated 21 layoffs were prevented this week, as a result of Workshare.

Emergency Unemployment Compensation 08 – EUC08, which became effective July 6, 2008, provides up to 53 weeks of federally funded benefits to eligible individuals who exhausted their UI claims. This week there were 381 new EUC08 claims processed and 12,768 continued claims processed (5,082 under tier I, 3,480 under tier II, 2,799 under tier III and 1,407 under tier IV).

Extended Benefits – are payable to individuals who have exhausted UI or EUC08 claims. This week, 118 new EB claims and 1,525 continued EB claims were processed.

Exhaustions – 401 individuals exhausted their regular payments this week, an increase of 11 from the previous week and a decrease of 9 from a year ago. There were 259 individuals that exhausted EUC08 and 50 individuals that exhausted EB.

Temporary Disability Insurance

Temporary Disability Insurance – 831 initial claims and 7,605 continued claims were processed for Temporary Disability Insurance. The average weekly TDI payment is \$434 per week. Rhode Island is currently paying an average of 10.7 weeks per new claim.

| | Initial Claims | | | Continued Claims | TOTAL - Initial and Continued Claims | | | |
|------------------------------|-----------------------|------------|-------------------|-------------------------|---|----------------------|-----------------|----------------------|
| | Total | New | Additional | | Current Week | Previous Week | Year Ago | Two Years Ago |
| Total - All programs* | 2,356 | 1,413 | 943 | 27,558 | 29,914 | 29,614 | 35,781 | 38,451 |
| UI Claims | 1,435 | 818 | 617 | 12,022 | 13,457 | 13,188 | 14,788 | 16,749 |
| Change from: | | | | | | | | |
| Previous Week | -3 | -83 | 80 | 272 | 269 | | | |
| Year Ago | 17 | -62 | 79 | -1,348 | -1,331 | | | |
| Two Years Ago | -120 | -43 | -77 | -3,172 | -3,292 | | | |
| EUC08 Claims | 660 | 381 | 279 | 12,768 | 13,428 | 13,391 | 12,568 | 14,382 |
| Extended Benefits | 130 | 118 | 12 | 1,525 | 1,655 | 1,670 | 6,018 | 3,206 |
| Interstate-Liable | 43 | 25 | 18 | 480 | 523 | 501 | 565 | 628 |
| Workshare | 88 | 71 | 17 | 763 | 851 | 864 | 1,842 | 3,486 |
| Workshare Equivalency | 21 | 16 | 5 | 205 | 226 | 228 | 447 | 819 |
| UI Exhaustions | - | - | - | 401 | 401 | 390 | 410 | 536 |
| EUC08 Exhaustions | - | - | - | 259 | 259 | 225 | 97 | 339 |
| EB Exhaustions | - | - | - | 50 | 50 | 91 | 761 | 145 |
| TDI Claims | 831 | 692 | 139 | 7,605 | 8,436 | 8,192 | 8,103 | 8,568 |
| Change from: | | | | | | | | |
| Previous Week | 100 | 74 | 26 | 144 | 244 | | | |
| Year Ago | 5 | 9 | -4 | 328 | 333 | | | |

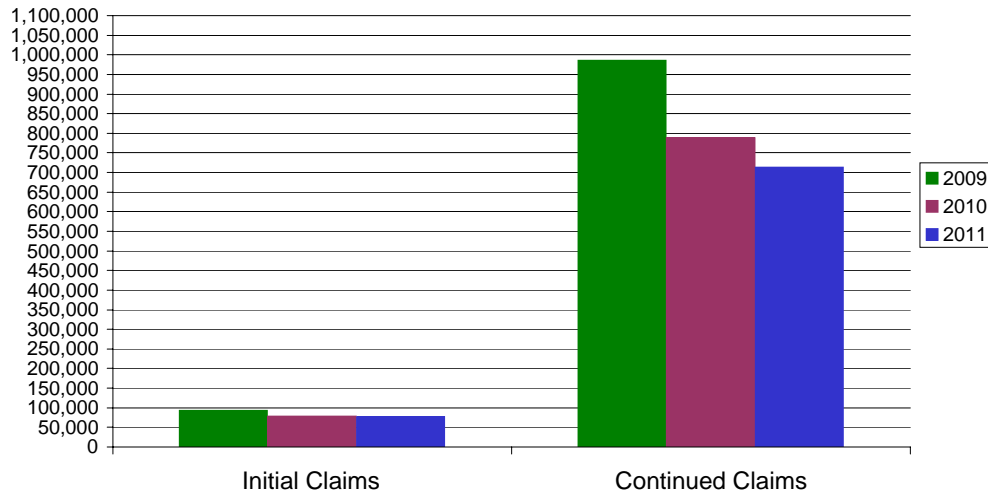
* Includes UI, EUC08, EB, Workshare & Interstate Liable.

Equal Opportunity Employer / Program / Auxiliary aids and services available upon request to individuals with disabilities / TTY via RI Relay 711.

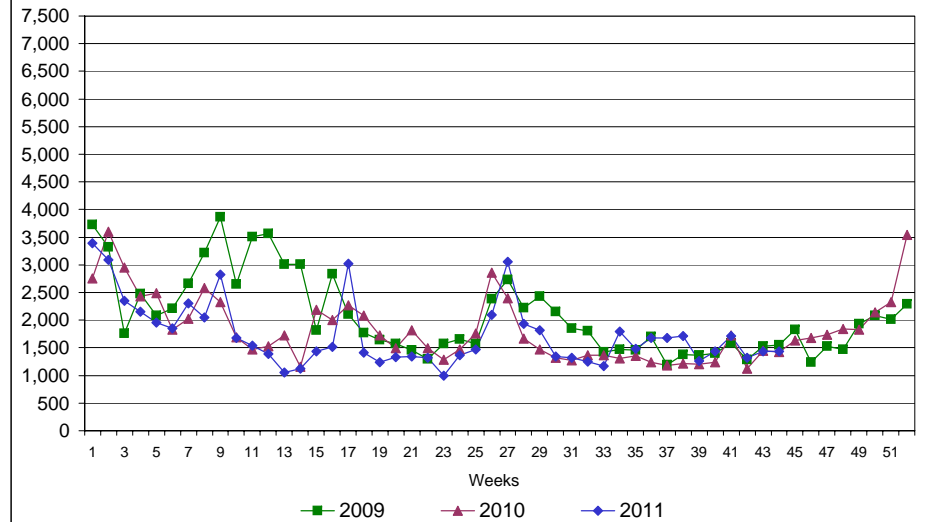
Rhode Island Department of Labor and Training

October 29, 2011

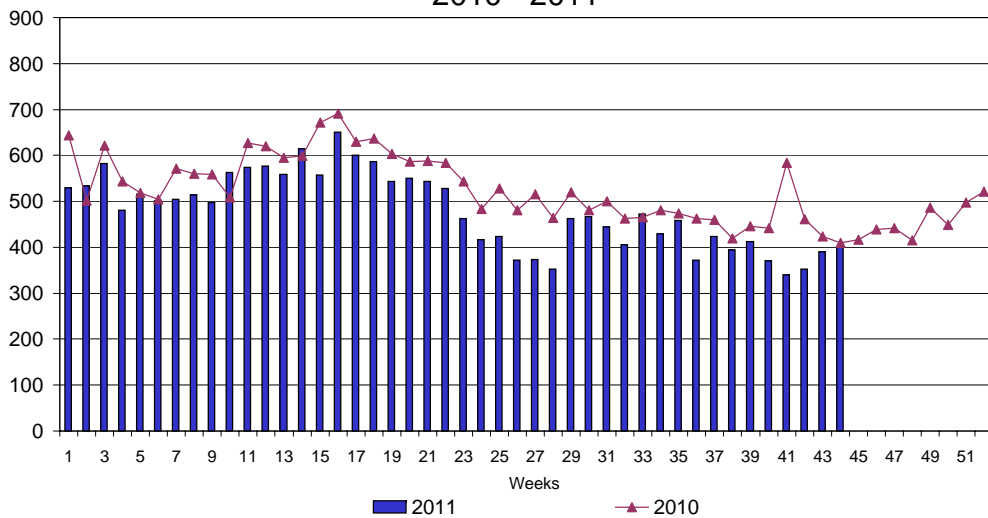
UI Claims Comparison Year to Date



UI Initial Claims 2009 - 2011



UI Exhaustions 2010 - 2011



TDI Claims Comparison Year to Date

