



Rhode Island Department of Labor and Training

Weekly Update of Claims Activity

Week Ending: November 6, 2010

Unemployment Insurance

Initial Claims – 1,634 initial claims were processed during the week ending 11/6/10, an increase 216 from the previous week, and a decrease of 198 from a year ago. The number of initial claims filed to date is down 19.0 percent below last year and up 7.2 percent from two years ago.

Continued Claims – 13,354 continued claims were processed during the week of 11/6/10, a decrease of 16 from the previous week and a decrease of 1,767 from a year ago. The number of continued claims filed to date is down 24.9 percent from a year ago and up 14.4 percent from two years ago.

Workshare – gives employers an alternative to layoffs by allowing employees to work reduced hours and collect a percentage of regular UI benefits to compensate for lost pay. This week, 228 initial claims and 1,533 continued claims were processed. An estimated 49 layoffs were prevented this week, as a result of Workshare.

Emergency Unemployment Compensation 08 – EUC08, which became effective July 6, 2008, provides up to 53 weeks of federally funded benefits to eligible individuals who exhausted their UI claims. This week there were 577 new EUC08 claims processed and 12,313 continued claims processed (5,492 under tier I, 3,280 under tier II, 2,551 under tier III and 990 under tier IV).

Extended Benefits – are payable to individuals who have exhausted UI or EUC08 claims. This week, 43 new EB claims and 5,123 continued EB claims were processed.

Exhaustions – 416 individuals exhausted their regular payments this week, an increase of 6 from the previous week and a decrease of 197 from a year ago. There were 127 individuals that exhausted EUC08 and 697 individuals that exhausted EB.

Temporary Disability Insurance

Temporary Disability Insurance – 691 initial claims and 7,267 continued claims were processed for Temporary Disability Insurance. The average weekly TDI payment is \$423 per week. Rhode Island is currently paying an average of 10.7 weeks per new claim.

	Initial Claims	New Claims	Additional Claims	Continued Claims	Current Week	Previous Week	Year Ago	Two Years Ago
Total - All programs*	2,816	1,631	1,185	32,866	35,682	35,781	38,449	21,912
UI Claims	1,634	974	660	13,354	14,988	14,788	16,953	13,970
Change from:								
Previous Week	216	94	122	-16	200			
Year Ago	-198	-42	-156	-1,767	-1,965			
Two Years Ago	287	138	149	731	1,018			
EUC08 Claims	817	577	240	12,313	13,130	12,568	14,419	3,750
Extended Benefits	84	43	41	5,123	5,207	6,018	3,268	2,190
UI Exhaustions	-			416	416	410	613	390
EUC08 Exhaustions	-			127	127	97	275	278
EB Exhaustions	-			697	697	761	142	24
Workshare	228	15	213	1,533	1,761	1,842	3,042	1,268
Workshare Equivalency	49	3	46	366	415	447	693	301
Interstate-Liable	53	22	31	543	596	565	767	734
TDI Claims	691	570	121	7,267	7,958	8,103	8,926	9,292
Change from:								
Previous Week	-135	-113	-22	-10	-145			
Year Ago	-210	-148	-62	-758	-968			

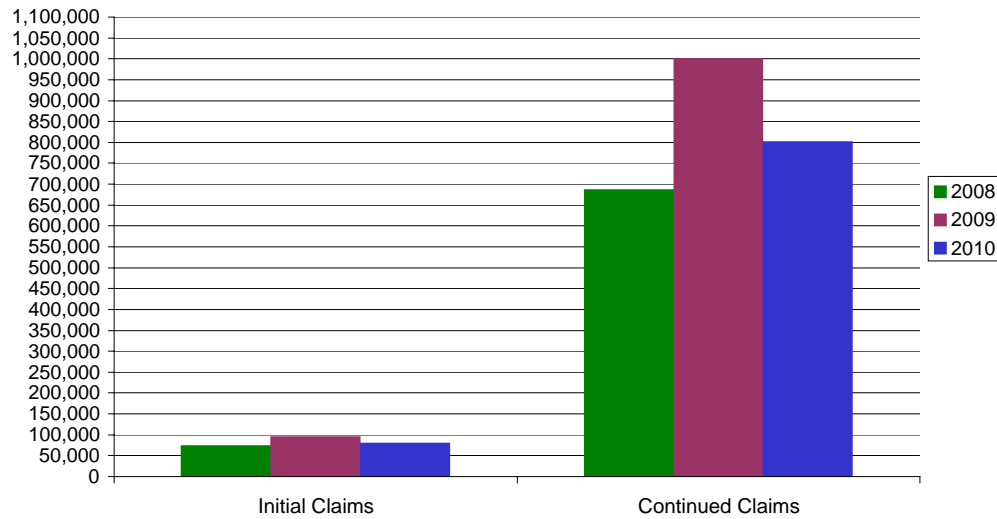
* Includes UI, EUC08, EB, Workshare & Interstate Liable.

a product of: Labor Market Information unit

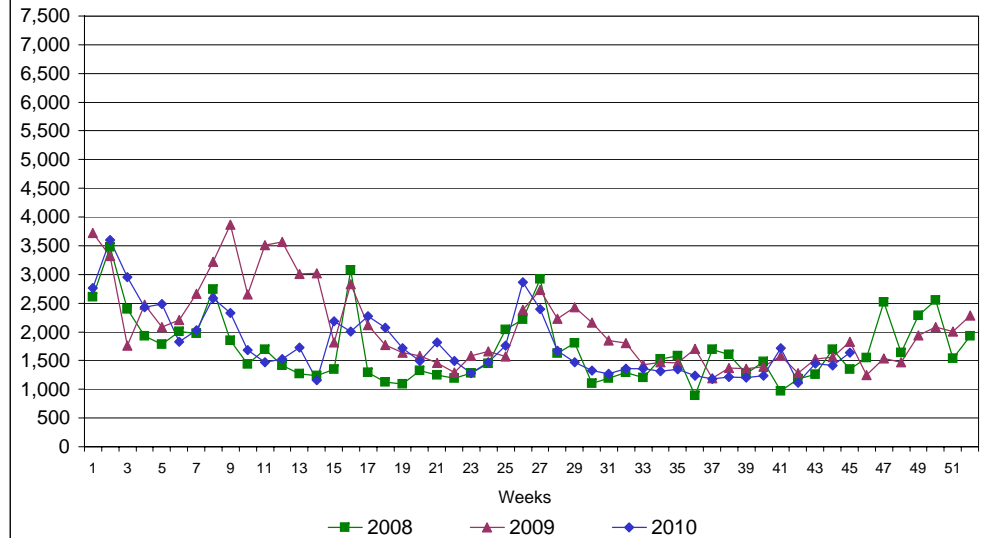
Rhode Island Department of Labor and Training

November 6, 2010

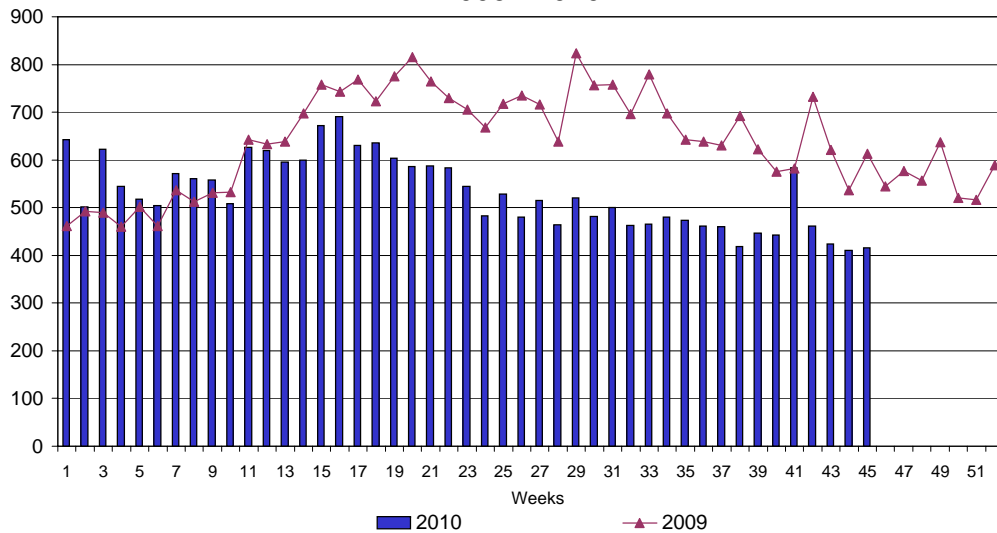
UI Claims Comparison Year to Date



UI Initial Claims 2008 - 2010



UI Exhaustions 2009 - 2010



TDI Claims Comparison Year to Date

