



Rhode Island Department of Labor and Training

Weekly Update of Claims Activity

Week Ending: November 13, 2010

Unemployment Insurance

Initial Claims – 1,678 initial claims were processed during the week ending 11/13/10, an increase 44 from the previous week, and an increase of 434 from a year ago. The number of initial claims filed to date is down 18.1 percent below last year and up 7.2 percent from two years ago.

Continued Claims – 12,976 continued claims were processed during the week of 11/13/10, a decrease of 378 from the previous week and a decrease of 2,066 from a year ago. The number of continued claims filed to date is down 24.8 percent from a year ago and up 14.1 percent from two years ago.

Workshare – gives employers an alternative to layoffs by allowing employees to work reduced hours and collect a percentage of regular UI benefits to compensate for lost pay. This week, 85 initial claims and 1,497 continued claims were processed. An estimated 18 layoffs were prevented this week, as a result of Workshare.

Emergency Unemployment Compensation 08 – EUC08, which became effective July 6, 2008, provides up to 53 weeks of federally funded benefits to eligible individuals who exhausted their UI claims. This week there were 697 new EUC08 claims processed and 12,814 continued claims processed (5,809 under tier I, 3,191 under tier II, 2,608 under tier III and 1,206 under tier IV).

Extended Benefits – are payable to individuals who have exhausted UI or EUC08 claims. This week, 43 new EB claims and 4,402 continued EB claims were processed.

Exhaustions – 439 individuals exhausted their regular payments this week, an increase of 23 from the previous week and a decrease of 106 from a year ago. There were 115 individuals that exhausted EUC08 and 667 individuals that exhausted EB.

Temporary Disability Insurance

Temporary Disability Insurance – 829 initial claims and 7,583 continued claims were processed for Temporary Disability Insurance. The average weekly TDI payment is \$434 per week. Rhode Island is currently paying an average of 10.7 weeks per new claim.

	Initial Claims	New Claims	Additional Claims	Continued Claims	Current Week	Previous Week	Year Ago	Two Years Ago
Total - All programs*	2,836	1,777	1,059	32,260	35,096	35,682	38,031	22,643
UI Claims	1,678	1,010	668	12,976	14,654	14,988	16,286	14,944
Change from:								
Previous Week	44	36	8	-378	-334			
Year Ago	434	335	99	-2,066	-1,632			
Two Years Ago	127	-16	143	-417	-290			
EUC08 Claims	949	697	252	12,814	13,763	13,130	14,245	3,749
Extended Benefits	84	43	41	4,402	4,486	5,207	3,049	2,369
UI Exhaustions	-			439	439	416	545	370
EUC08 Exhaustions	-			115	115	127	304	260
EB Exhaustions	-			667	667	697	153	64
Workshare	85	1	84	1,497	1,582	1,761	3,799	801
Workshare Equivalency	18	0	18	372	390	415	864	189
Interstate-Liable	40	26	14	571	611	596	652	780
TDI Claims	829	711	118	7,583	8,412	7,958	7,795	9,333
Change from:								
Previous Week	138	141	-3	316	454			
Year Ago	3	37	-34	614	617			

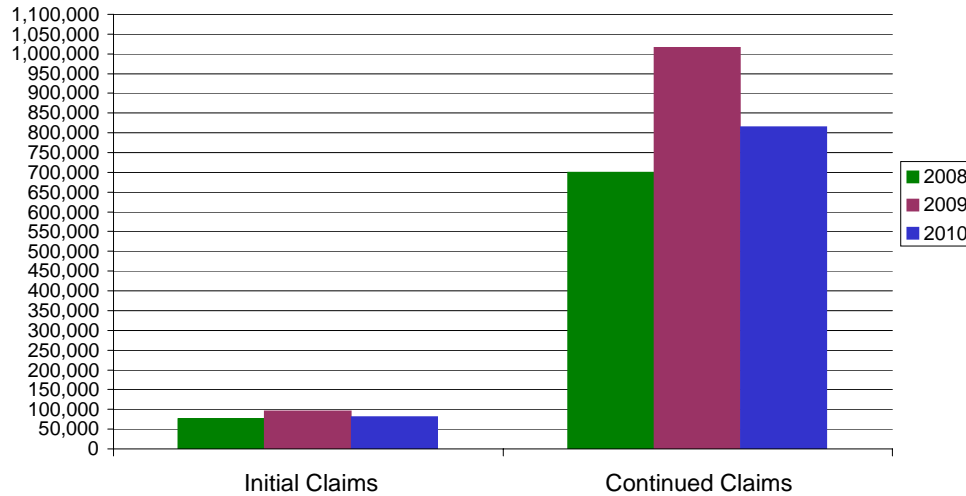
* Includes UI, EUC08, EB, Workshare & Interstate Liable.

a product of: Labor Market Information unit

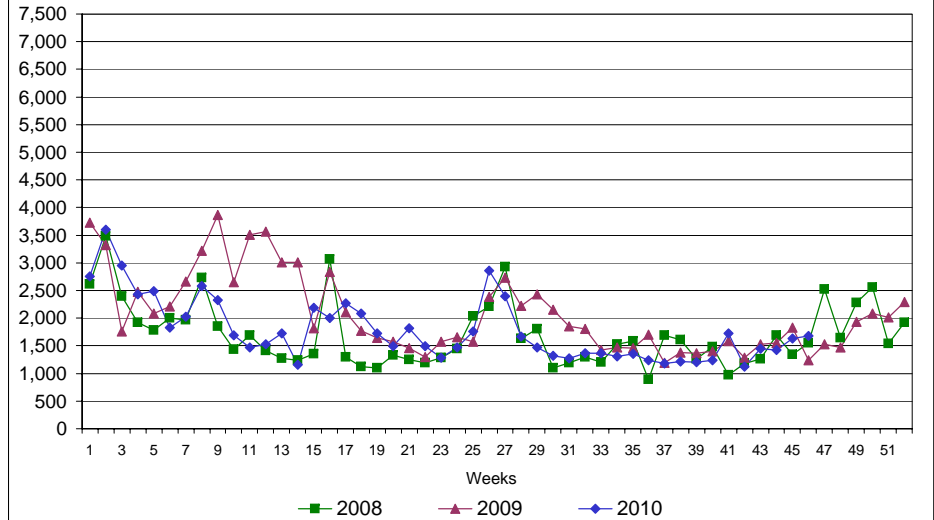
Rhode Island Department of Labor and Training

November 13, 2010

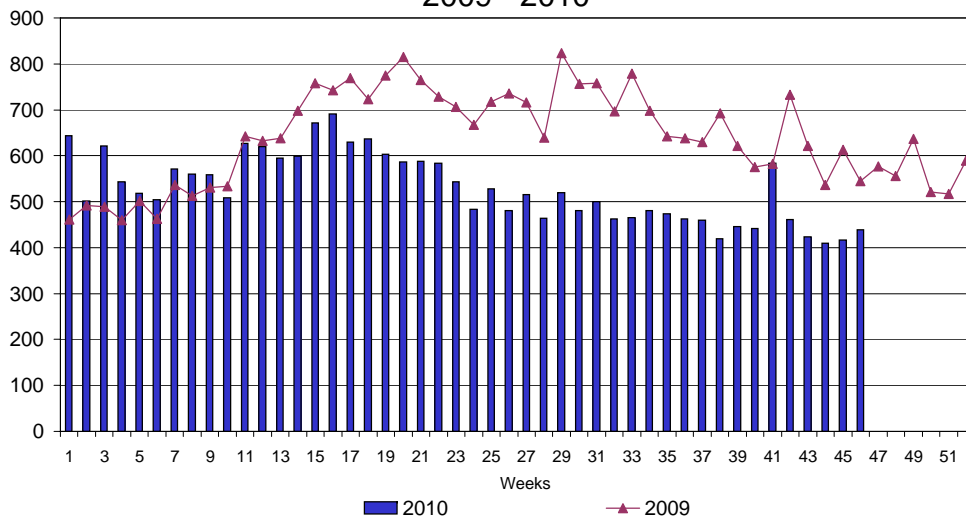
UI Claims Comparison Year to Date



UI Initial Claims 2008 - 2010



UI Exhaustions 2009 - 2010



TDI Claims Comparison Year to Date

