



Rhode Island Department of Labor and Training

Weekly Update of Claims Activity

Week Ending: November 20, 2010

Unemployment Insurance

Initial Claims – 1,735 initial claims were processed during the week ending 11/20/10, an increase 57 from the previous week, and an increase of 202 from a year ago. The number of initial claims filed to date is down 17.5 percent below last year and up 6.1 percent from two years ago.

Continued Claims – 13,882 continued claims were processed during the week of 11/20/10, an increase of 906 from the previous week and a decrease of 1,988 from a year ago. The number of continued claims filed to date is down 24.6 percent from a year ago and up 13.8 percent from two years ago.

Workshare – gives employers an alternative to layoffs by allowing employees to work reduced hours and collect a percentage of regular UI benefits to compensate for lost pay. This week, 254 initial claims and 1,823 continued claims were processed. An estimated 59 layoffs were prevented this week, as a result of Workshare.

Emergency Unemployment Compensation 08 – EUC08, which became effective July 6, 2008, provides up to 53 weeks of federally funded benefits to eligible individuals who exhausted their UI claims. This week there were 684 new EUC08 claims processed and 13,562 continued claims processed (6,262 under tier I, 3,169 under tier II, 2,691 under tier III and 1,440 under tier IV).

Extended Benefits – are payable to individuals who have exhausted UI or EUC08 claims. This week, 48 new EB claims and 3,748 continued EB claims were processed.

Exhaustions – 442 individuals exhausted their regular payments this week, an increase of 3 from the previous week and a decrease of 135 from a year ago. There were 122 individuals that exhausted EUC08 and 671 individuals that exhausted EB.

Temporary Disability Insurance

Temporary Disability Insurance – 823 initial claims and 7,523 continued claims were processed for Temporary Disability Insurance. The average weekly TDI payment is \$431 per week. Rhode Island is currently paying an average of 10.8 weeks per new claim.

	Initial Claims	New Claims	Additional Claims	Continued Claims	Current Week	Previous Week	Year Ago	Two Years Ago
Total - All programs*	3,063	1,873	1,190	33,618	36,681	35,096	40,232	26,059
UI Claims	1,735	1,079	656	13,882	15,617	14,654	17,403	16,709
Change from:								
Previous Week	57	69	-12	906	963			
Year Ago	202	192	10	-1,988	-1,786			
Two Years Ago	-789	-611	-178	-303	-1,092			
EUC08 Claims	931	684	247	13,562	14,493	13,763	15,783	3,861
Extended Benefits	95	48	47	3,748	3,843	4,486	3,023	2,767
UI Exhaustions	-			442	442	439	577	419
EUC08 Exhaustions	-			122	122	115	0	241
EB Exhaustions	-			671	671	667	139	4
Workshare	254	41	213	1,823	2,077	1,582	3,350	1,845
Workshare Equivalency	59	15	44	439	498	390	794	453
Interstate-Liable	48	21	27	603	651	611	673	877
TDI Claims	823	689	134	7,523	8,346	8,412	8,321	10,412
Change from:								
Previous Week	-6	-22	16	-60	-66			
Year Ago	-463	-373	-90	488	25			

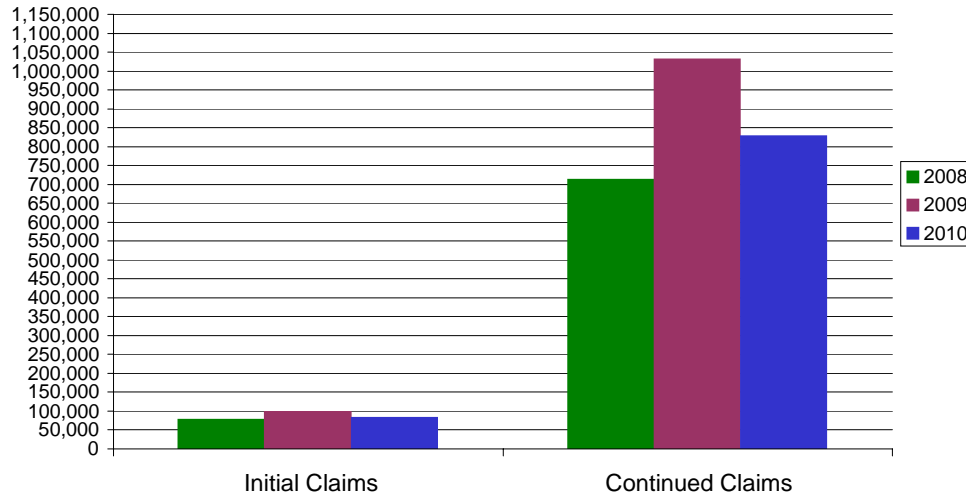
* Includes UI, EUC08, EB, Workshare & Interstate Liable.

a product of: Labor Market Information unit

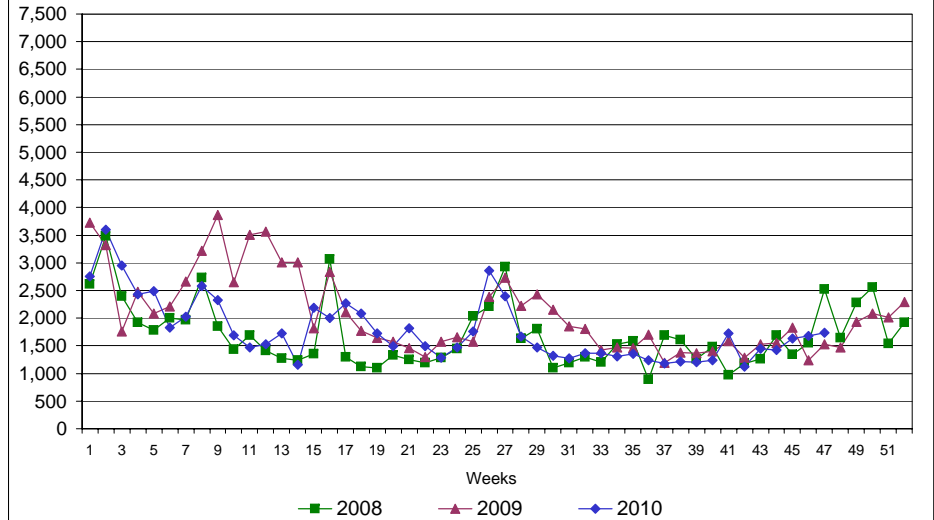
Rhode Island Department of Labor and Training

November 20, 2010

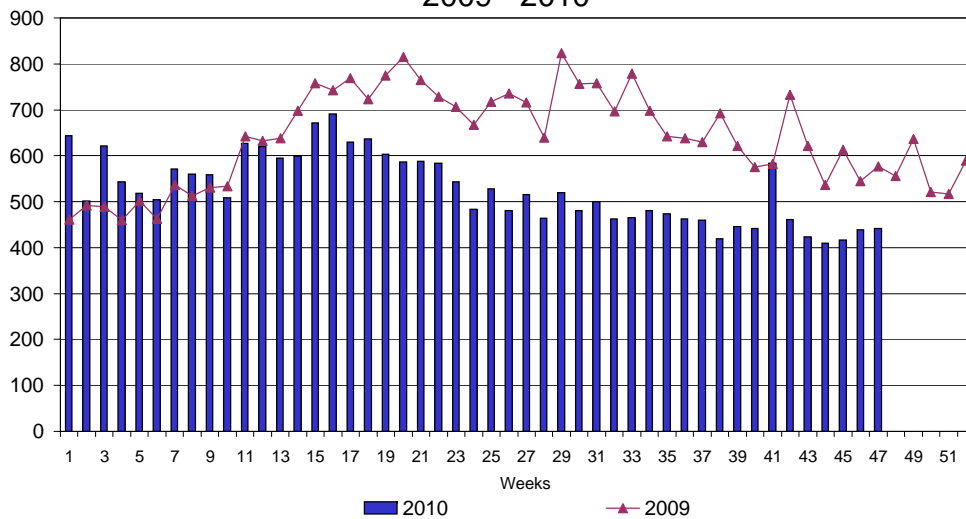
UI Claims Comparison Year to Date



UI Initial Claims 2008 - 2010



UI Exhaustions 2009 - 2010



TDI Claims Comparison Year to Date

