



Rhode Island Department of Labor and Training

Weekly Update of Claims Activity

Week Ending: December 4, 2010

Unemployment Insurance

Initial Claims – 1,824 initial claims were processed during the week ending 12/4/10, a decrease 15 from the previous week, and a decrease of 114 from a year ago. The number of initial claims filed to date is down 16.5 percent below last year and up 5.6 percent from two years ago.

Continued Claims – 14,884 continued claims were processed during the week of 12/4/10, an increase of 1,177 from the previous week and a decrease of 1,466 from a year ago. The number of continued claims filed to date is down 24.1 percent from a year ago and up 13.0 percent from two years ago.

Workshare – gives employers an alternative to layoffs by allowing employees to work reduced hours and collect a percentage of regular UI benefits to compensate for lost pay. This week, 162 initial claims and 1,430 continued claims were processed. An estimated 39 layoffs were prevented this week, as a result of Workshare.

Emergency Unemployment Compensation 08 – EUC08, which became effective July 6, 2008, provides up to 53 weeks of federally funded benefits to eligible individuals who exhausted their UI claims. This week there were 202 new EUC08 claims processed and 14,544 continued claims processed (6,748 under tier I, 3,164 under tier II, 2,779 under tier III and 1,853 under tier IV).

Extended Benefits – are payable to individuals who have exhausted UI or EUC08 claims. This week, 488 new EB claims and 2,537 continued EB claims were processed.

Exhaustions – 486 individuals exhausted their regular payments this week, an increase of 71 from the previous week and a decrease of 151 from a year ago. There were 219 individuals that exhausted EUC08 and 588 individuals that exhausted EB.

Temporary Disability Insurance

Temporary Disability Insurance – 735 initial claims and 7,099 continued claims were processed for Temporary Disability Insurance. The average weekly TDI payment is \$437 per week. Rhode Island is currently paying an average of 10.7 weeks per new claim.

	Initial Claims	New Claims	Additional Claims	Continued Claims	Current Week	Previous Week	Year Ago	Two Years Ago
Total - All programs*	2,999	1,813	1,186	33,980	36,979	36,269	44,230	28,745
UI Claims	1,824	1,081	743	14,884	16,708	15,546	18,288	18,937
Change from:								
Previous Week	-15	89	-104	1,177	1,162			
Year Ago	-114	-47	-67	-1,466	-1,580			
Two Years Ago	-456	-419	-37	-1,773	-2,229			
EUC08 Claims	449	202	247	14,544	14,993	14,909	19,129	7,137
Extended Benefits	529	488	41	2,537	3,066	3,178	2,664	201
UI Exhaustions	-			486	486	415	637	380
EUC08 Exhaustions	-			219	219	145	0	21
EB Exhaustions	-			588	588	609	154	1
Workshare	162	27	135	1,430	1,592	2,004	3,306	1,559
Workshare Equivalency	39	9	30	439	478	506	779	443
Interstate-Liable	35	15	20	585	620	632	843	911
TDI Claims	735	611	124	7,099	7,834	7,772	8,289	8,039
Change from:								
Previous Week	122	124	-2	-60	62			
Year Ago	140	129	11	-595	-455			

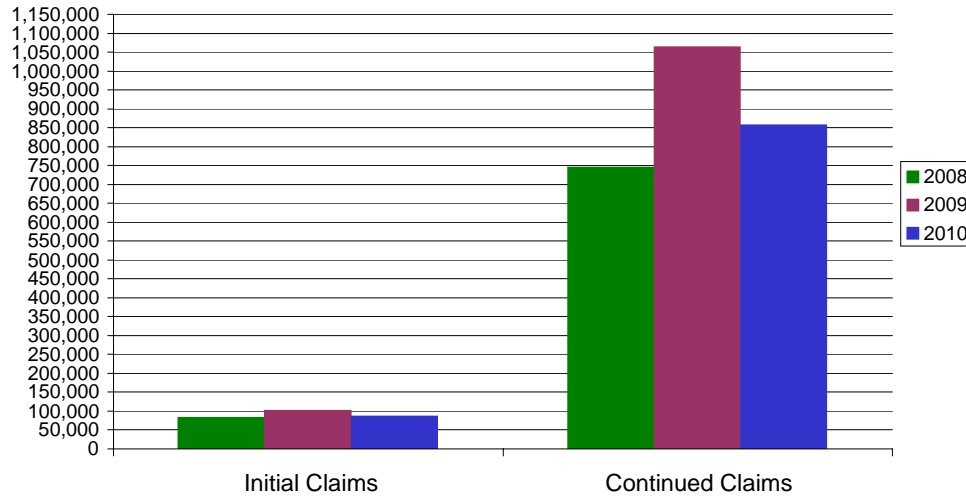
* Includes UI, EUC08, EB, Workshare & Interstate Liable.

a product of: Labor Market Information unit

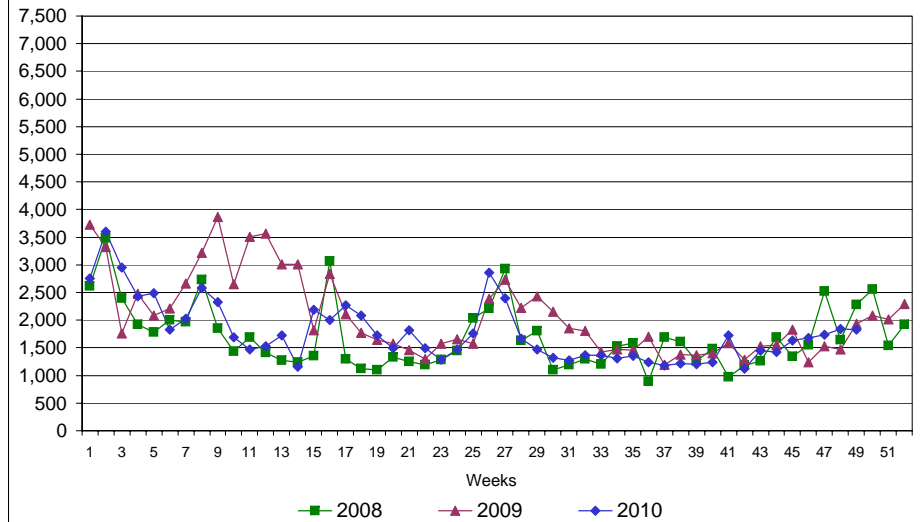
Rhode Island Department of Labor and Training

December 4, 2010

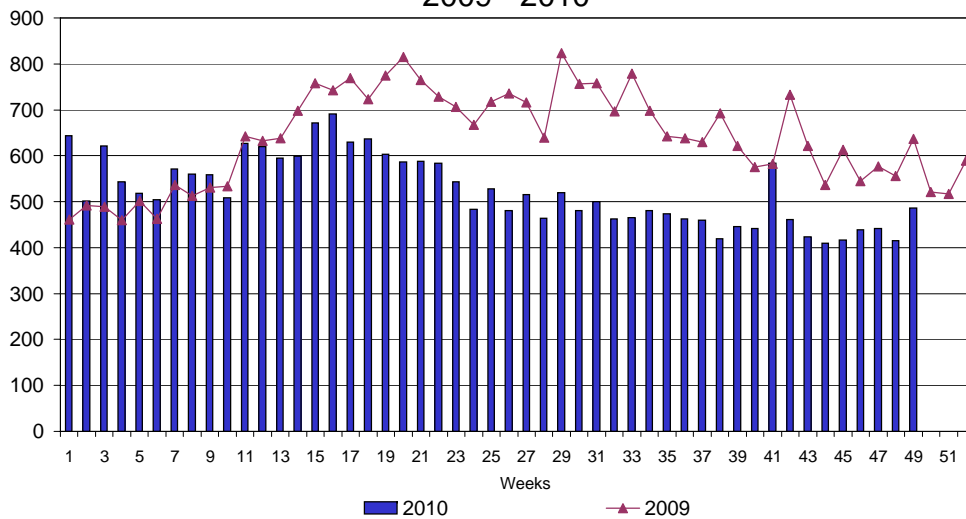
UI Claims Comparison Year to Date



UI Initial Claims 2008 - 2010



UI Exhaustions 2009 - 2010



TDI Claims Comparison Year to Date

