



Rhode Island Department of Labor and Training

Weekly Update of Claims Activity

Week Ending: December 11, 2010

Unemployment Insurance

Initial Claims – 2,144 initial claims were processed during the week ending 12/11/10, an increase 320 from the previous week, and an increase of 57 from a year ago. The number of initial claims filed to date is down 16.0 percent below last year and up 5.0 percent from two years ago.

Continued Claims – 15,421 continued claims were processed during the week of 12/11/10, an increase of 537 from the previous week and a decrease of 857 from a year ago. The number of continued claims filed to date is down 23.8 percent from a year ago and up 12.6 percent from two years ago.

Workshare – gives employers an alternative to layoffs by allowing employees to work reduced hours and collect a percentage of regular UI benefits to compensate for lost pay. This week, 196 initial claims and 2,024 continued claims were processed. An estimated 43 layoffs were prevented this week, as a result of Workshare.

Emergency Unemployment Compensation 08 – EUC08, which became effective July 6, 2008, provides up to 53 weeks of federally funded benefits to eligible individuals who exhausted their UI claims. This week there were 268 new EUC08 claims processed and 14,816 continued claims processed (6,773 under tier I, 3,211 under tier II, 2,856 under tier III and 1,976 under tier IV).

Extended Benefits – are payable to individuals who have exhausted UI or EUC08 claims. This week, 816 new EB claims and 2,431 continued EB claims were processed.

Exhaustions – 448 individuals exhausted their regular payments this week, a decrease of 38 from the previous week and a decrease of 73 from a year ago. There were 358 individuals that exhausted EUC08 and 293 individuals that exhausted EB.

Temporary Disability Insurance

Temporary Disability Insurance – 732 initial claims and 7,571 continued claims were processed for Temporary Disability Insurance. The average weekly TDI payment is \$429 per week. Rhode Island is currently paying an average of 10.8 weeks per new claim.

	Initial Claims	New Claims	Additional Claims	Continued Claims	Current Week	Previous Week	Year Ago	Two Years Ago
Total - All programs*	3,732	2,417	1,315	35,339	39,071	36,979	45,114	30,722
UI Claims	2,144	1,290	854	15,421	17,565	16,708	18,365	19,540
Change from:								
Previous Week	320	209	111	537	857			
Year Ago	57	345	-288	-857	-800			
Two Years Ago	-413	-130	-283	-1,562	-1,975			
EUC08 Claims	504	268	236	14,816	15,320	14,993	19,798	8,253
Extended Benefits	849	816	33	2,431	3,280	3,066	2,481	174
UI Exhaustions	-			448	448	486	521	419
EUC08 Exhaustions	-			358	358	219	0	13
EB Exhaustions	-			293	293	588	163	6
Workshare	196	23	173	2,024	2,220	1,592	3,765	1,867
Workshare Equivalency	43	5	38	540	583	478	1,034	447
Interstate-Liable	39	20	19	647	686	620	705	888
TDI Claims	732	607	125	7,571	8,303	7,834	9,502	10,205
Change from:								
Previous Week	-3	-4	1	472	469			
Year Ago	-531	-431	-100	-668	-1,199			

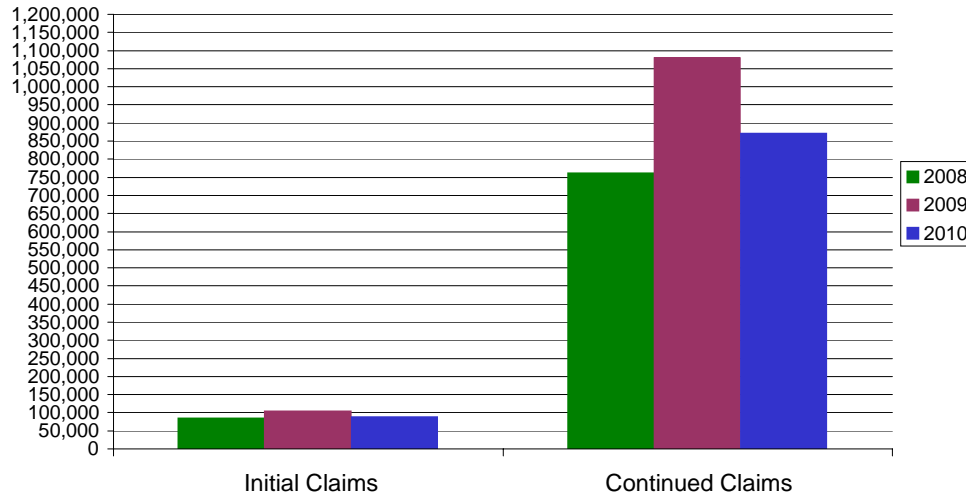
* Includes UI, EUC08, EB, Workshare & Interstate Liable.

a product of: Labor Market Information unit

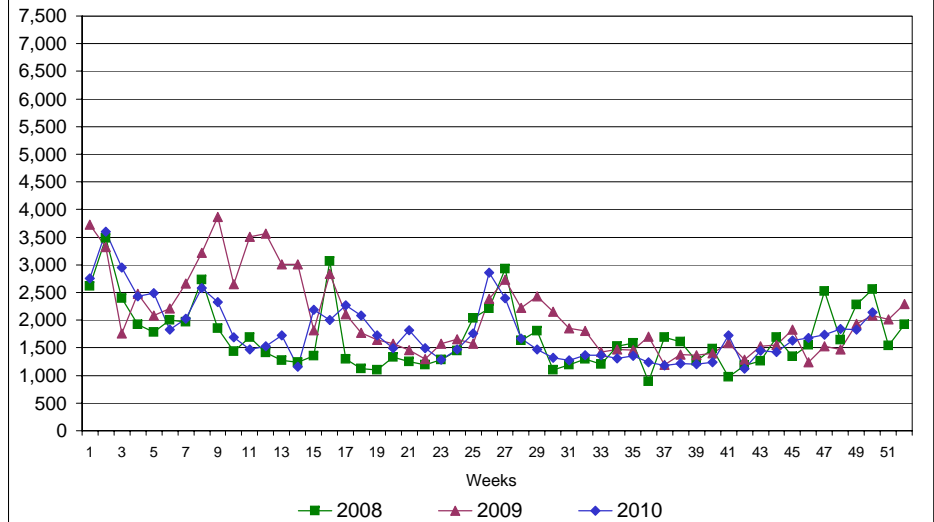
Rhode Island Department of Labor and Training

December 11, 2010

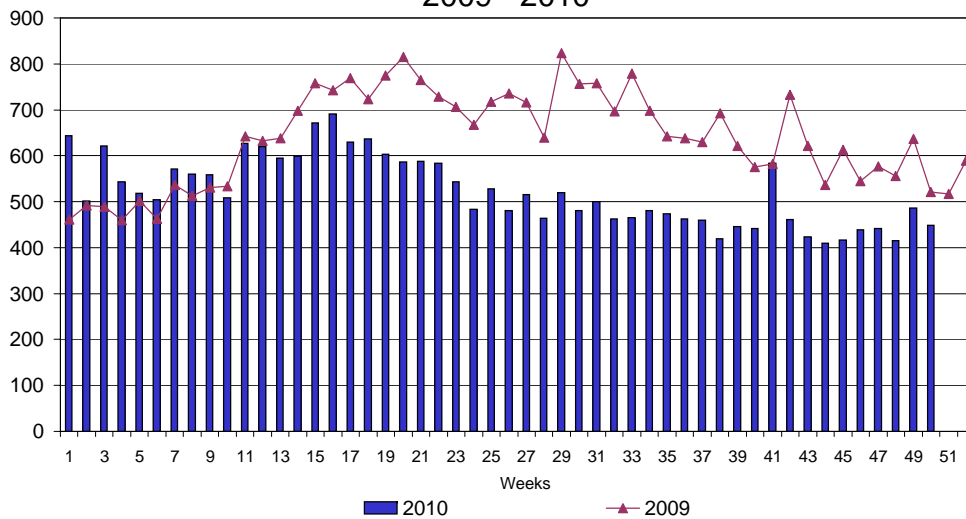
UI Claims Comparison Year to Date



UI Initial Claims 2008 - 2010



UI Exhaustions 2009 - 2010



TDI Claims Comparison Year to Date

