



Rhode Island Department of Labor and Training

Weekly Update of Claims Activity

Week Ending: December 18 2010

Unemployment Insurance

Initial Claims – 2,323 initial claims were processed during the week ending 12/18/10, an increase 179 from the previous week, and an increase of 312 from a year ago. The number of initial claims filed to date is down 15.3 percent below last year and up 5.7 percent from two years ago.

Continued Claims – 15,780 continued claims were processed during the week of 12/18/10, an increase of 359 from the previous week and a decrease of 2,243 from a year ago. The number of continued claims filed to date is down 23.6 percent from a year ago and up 12.0 percent from two years ago.

Workshare – gives employers an alternative to layoffs by allowing employees to work reduced hours and collect a percentage of regular UI benefits to compensate for lost pay. This week, 152 initial claims and 1,305 continued claims were processed. An estimated 38 layoffs were prevented this week, as a result of Workshare.

Emergency Unemployment Compensation 08 – EUC08, which became effective July 6, 2008, provides up to 53 weeks of federally funded benefits to eligible individuals who exhausted their UI claims. This week there were 55 new EUC08 claims processed and 14,497 continued claims processed (6,680 under tier I, 3,195 under tier II, 2,829 under tier III and 1,793 under tier IV).

Extended Benefits – are payable to individuals who have exhausted UI or EUC08 claims. This week, 1,134 new EB claims and 2,856 continued EB claims were processed.

Exhaustions – 498 individuals exhausted their regular payments this week, an increase of 50 from the previous week and a decrease of 19 from a year ago. There were 352 individuals that exhausted EUC08 and 112 individuals that exhausted EB.

Temporary Disability Insurance

Temporary Disability Insurance – 585 initial claims and 7,221 continued claims were processed for Temporary Disability Insurance. The average weekly TDI payment is \$443 per week. Rhode Island is currently paying an average of 10.9 weeks per new claim.

	Initial Claims	New Claims	Additional Claims	Continued Claims	Current Week	Previous Week	Year Ago	Two Years Ago
Total - All programs*	3,986	2,552	1,434	35,071	39,057	39,071	46,740	37,833
UI Claims	2,323	1,336	987	15,780	18,103	17,565	20,034	20,244
Change from:								
Previous Week	179	46	133	359	538			
Year Ago	312	290	22	-2,243	-1,931			
Two Years Ago	789	513	276	-2,930	-2,141			
EUC08 Claims	302	55	247	14,497	14,799	15,320	20,069	14,179
Extended Benefits	1,175	1,134	41	2,856	4,031	3,280	2,330	41
UI Exhaustions	-			498	498	448	517	431
EUC08 Exhaustions	-			352	352	358	0	6
EB Exhaustions	-			112	112	293	178	0
Workshare	152	16	136	1,305	1,457	2,220	3,564	2,339
Workshare Equivalency	38	3	35	339	377	583	804	626
Interstate-Liable	34	11	23	633	667	686	743	1,030
TDI Claims	585	463	122	7,221	7,806	8,303	8,583	8,780
Change from:								
Previous Week	-147	-144	-3	-350	-497			
Year Ago	-400	-346	-54	-377	-777			

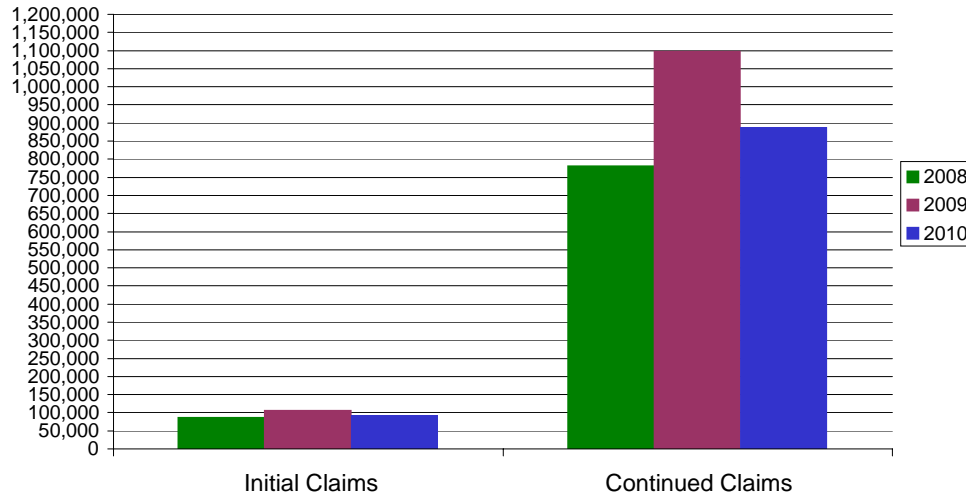
* Includes UI, EUC08, EB, Workshare & Interstate Liable.

a product of: Labor Market Information unit

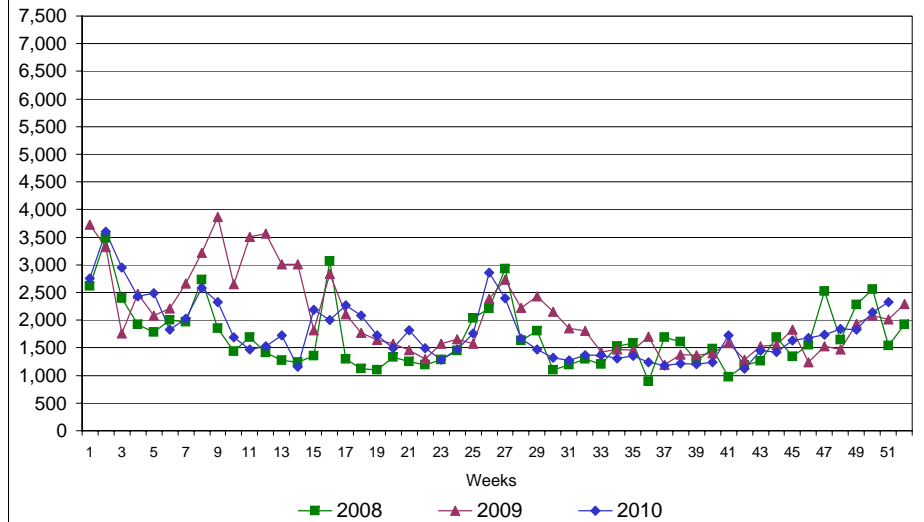
Rhode Island Department of Labor and Training

December 18, 2010

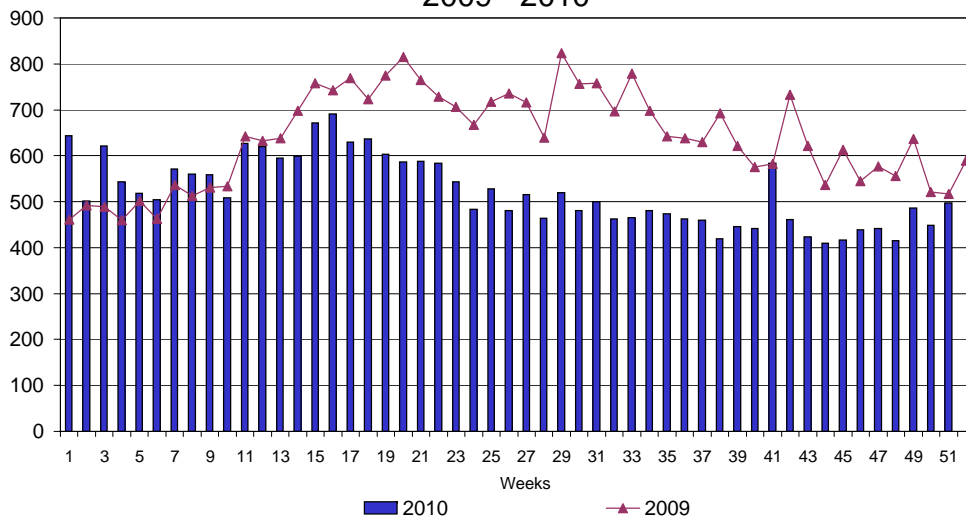
UI Claims Comparison Year to Date



UI Initial Claims 2008 - 2010



UI Exhaustions 2009 - 2010



TDI Claims Comparison Year to Date

