



Rhode Island Department of Labor and Training

Weekly Update of Claims Activity

Week Ending: December 25 2010

Unemployment Insurance

Initial Claims – 3,542 initial claims were processed during the week ending 12/25/10, an increase 1,219 from the previous week, and an increase of 1,255 from a year ago. The number of initial claims filed to date is down 13.4 percent below last year and up 7.2 percent from two years ago.

Continued Claims – 17,104 continued claims were processed during the week of 12/25/10, an increase of 1,324 from the previous week and a decrease of 390 from a year ago. The number of continued claims filed to date is down 23.2 percent from a year ago and up 11.8 percent from two years ago.

Workshare – gives employers an alternative to layoffs by allowing employees to work reduced hours and collect a percentage of regular UI benefits to compensate for lost pay. This week, 149 initial claims and 1,769 continued claims were processed. An estimated 39 layoffs were prevented this week, as a result of Workshare.

Emergency Unemployment Compensation 08 – EUC08, which became effective July 6, 2008, provides up to 53 weeks of federally funded benefits to eligible individuals who exhausted their UI claims. This week there were 462 new EUC08 claims processed and 13,492 continued claims processed (6,268 under tier I, 2,970 under tier II, 2,682 under tier III and 1,572 under tier IV).

Extended Benefits – are payable to individuals who have exhausted UI or EUC08 claims. This week, 239 new EB claims and 3,673 continued EB claims were processed.

Exhaustions – 521 individuals exhausted their regular payments this week, an increase of 23 from the previous week and a decrease of 68 from a year ago. There were 320 individuals that exhausted EUC08 and 90 individuals that exhausted EB.

Temporary Disability Insurance

Temporary Disability Insurance – 705 initial claims and 8,095 continued claims were processed for Temporary Disability Insurance. The average weekly TDI payment is \$429 per week. Rhode Island is currently paying an average of 10.9 weeks per new claim.

	Initial Claims	New Claims	Additional Claims	Continued Claims	Current Week	Previous Week	Year Ago	Two Years Ago
Total - All programs*	4,766	2,524	2,242	36,677	41,443	39,057	45,064	30,698
UI Claims	3,542	1,732	1,810	17,104	20,646	18,103	19,781	18,502
Change from:								
Previous Week	1,219	396	823	1,324	2,543			
Year Ago	1,255	717	538	-390	865			
Two Years Ago	1,618	716	902	526	2,144			
EUC08 Claims	725	462	263	13,492	14,217	14,799	19,802	9,649
Extended Benefits	296	239	57	3,673	3,969	4,031	2,022	10
UI Exhaustions	-			521	521	498	589	413
EUC08 Exhaustions	-			320	320	352	0	0
EB Exhaustions	-			90	90	112	157	1
Workshare	149	71	78	1,769	1,918	1,457	2,748	1,659
Workshare Equivalency	39	21	18	464	503	377	634	364
Interstate-Liable	54	20	34	639	693	667	711	878
TDI Claims	705	573	132	8,095	8,800	7,806	6,892	6,280
Change from:								
Previous Week	120	110	10	874	994			
Year Ago	201	166	35	1,707	1,908			

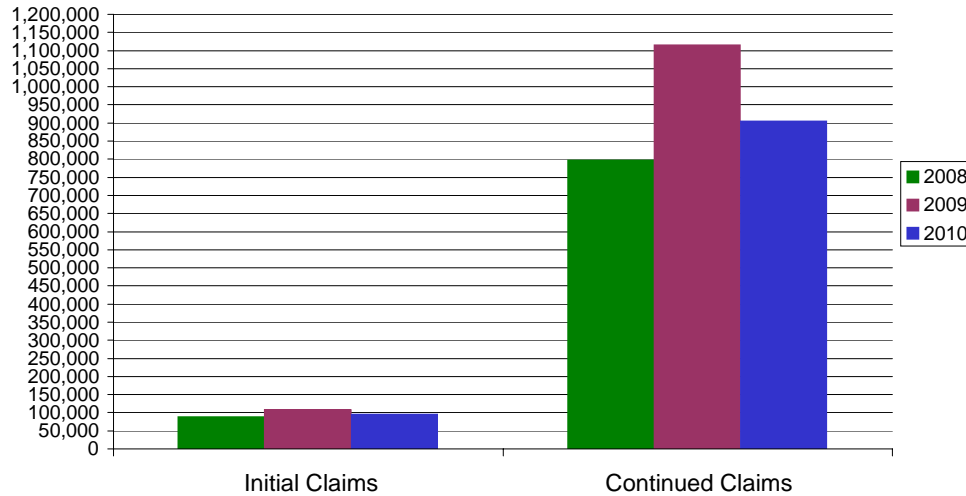
* Includes UI, EUC08, EB, Workshare & Interstate Liable.

a product of: Labor Market Information unit

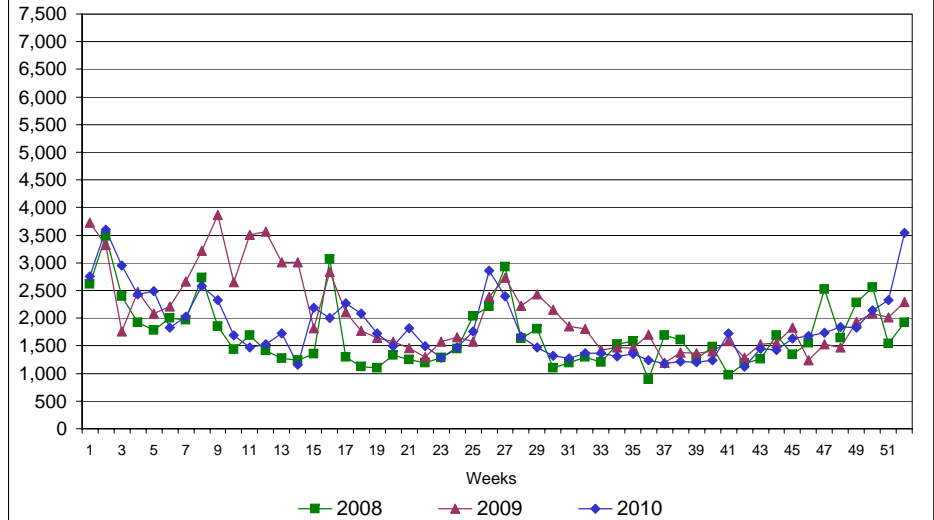
Rhode Island Department of Labor and Training

December 25, 2010

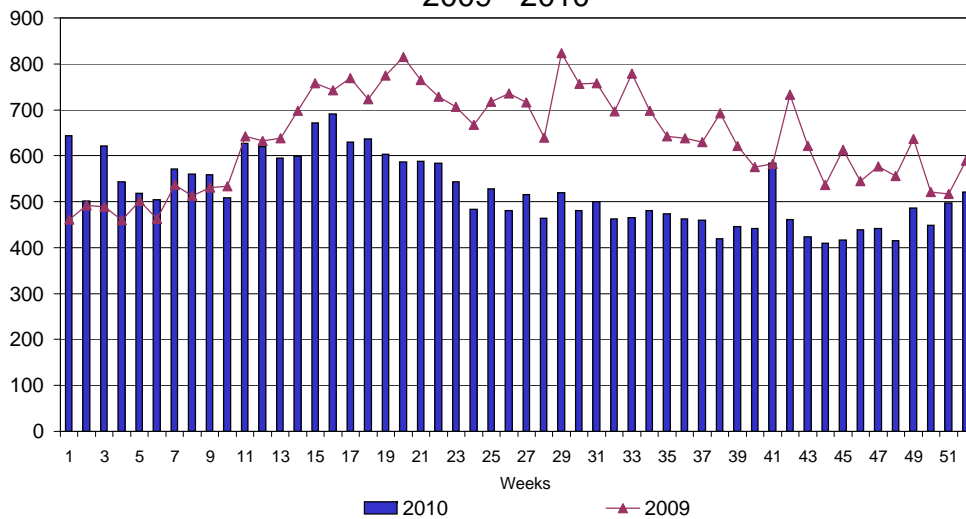
UI Claims Comparison Year to Date



UI Initial Claims 2008 - 2010



UI Exhaustions 2009 - 2010



TDI Claims Comparison Year to Date

