



Rhode Island Department of Labor and Training

Weekly Update of Claims Activity

Week Ending: January 1, 2011

Unemployment Insurance

Initial Claims – 3,395 initial claims were processed during the week ending 1/1/11, a decrease of 147 from the previous week, and an increase of 635 from a year ago.

Continued Claims – 17,744 continued claims were processed during the week of 1/1/11, an increase of 640 from the previous week and a decrease of 627 from a year ago.

Workshare – gives employers an alternative to layoffs by allowing employees to work reduced hours and collect a percentage of regular UI benefits to compensate for lost pay. This week, 122 initial claims and 1,031 continued claims were processed. An estimated 25 layoffs were prevented this week, as a result of Workshare.

Emergency Unemployment Compensation 08 – EUC08, which became effective July 6, 2008, provides up to 53 weeks of federally funded benefits to eligible individuals who exhausted their UI claims. This week there were 515 new EUC08 claims processed and 13,288 continued claims processed (6,172 under tier I, 2,929 under tier II, 2,788 under tier III and 1,399 under tier IV).

Extended Benefits – are payable to individuals who have exhausted UI or EUC08 claims. This week, 131 new EB claims and 3,654 continued EB claims were processed.

Exhaustions – 529 individuals exhausted their regular payments this week, an increase of 8 from the previous week and a decrease of 114 from a year ago. There were 324 individuals that exhausted EUC08 and 75 individuals that exhausted EB.

Temporary Disability Insurance

Temporary Disability Insurance – 551 initial claims and 6,189 continued claims were processed for Temporary Disability Insurance. The average weekly TDI payment is \$435 per week. Rhode Island is currently paying an average of 10.9 weeks per new claim.

	Initial Claims	New Claims	Additional Claims	Continued Claims	Current Week	Previous Week	Year Ago	Two Years Ago
Total - All programs*	4,480	2,357	2,123	36,350	40,830	41,443	44,982	36,072
UI Claims	3,395	1,680	1,715	17,744	21,139	20,646	21,131	23,461
Change from:								
Previous Week	-147	-52	-95	640	493			
Year Ago	635	-199	834	-627	8			
Two Years Ago	-327	-694	367	-1,995	-2,322			
EUC08 Claims	738	515	223	13,288	14,026	14,217	19,472	9,914
Extended Benefits	188	131	57	3,654	3,842	3,969	1,864	4
UI Exhaustions	-			529	529	521	643	461
EUC08 Exhaustions	-			324	324	320	1	0
EB Exhaustions	-			75	75	90	142	0
Workshare	122	13	109	1,031	1,153	1,918	1,773	1,747
Workshare Equivalency	25	3	22	251	276	503	437	529
Interstate-Liable	37	18	19	633	670	693	742	946
TDI Claims	551	460	91	6,189	6,740	8,800	6,937	6,563
Change from:								
Previous Week	-154	-113	-41	-1,906	-2,060			
Year Ago	115	113	2	-312	-197			

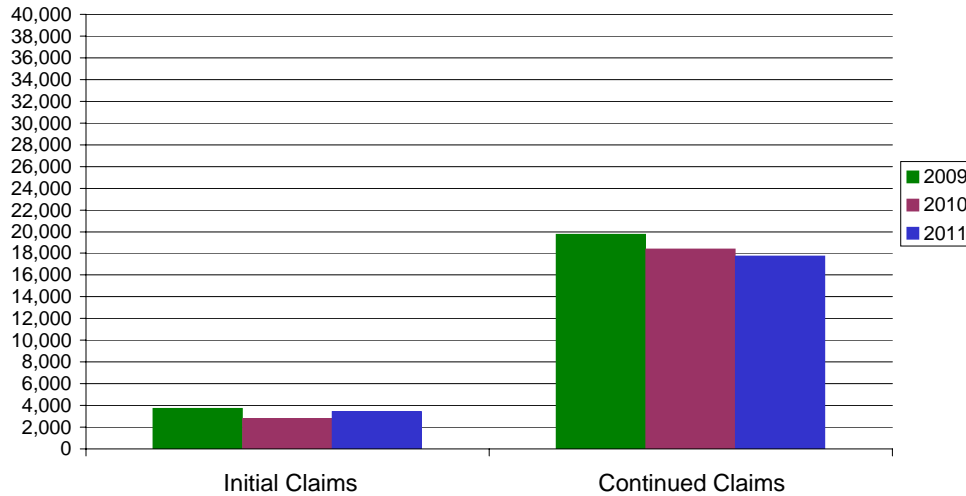
* Includes UI, EUC08, EB, Workshare & Interstate Liable.

a product of: Labor Market Information unit

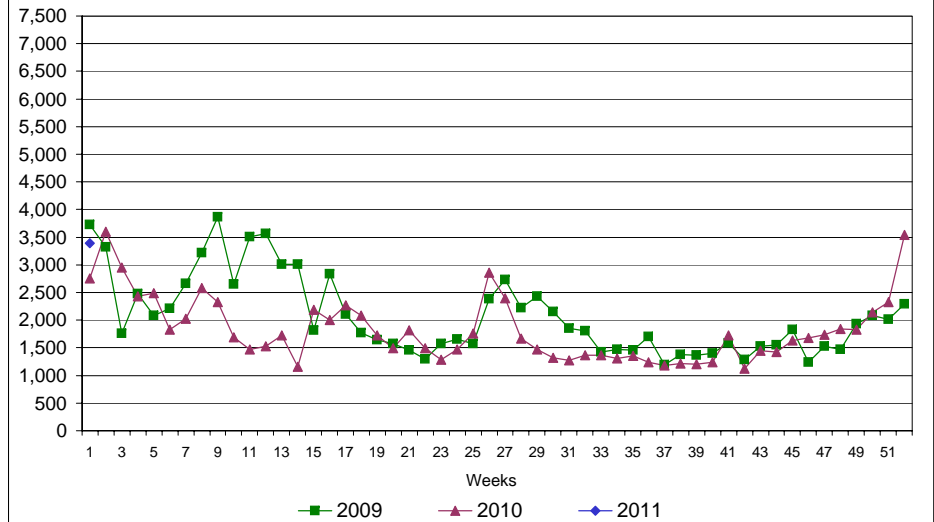
Rhode Island Department of Labor and Training

January 1, 2011

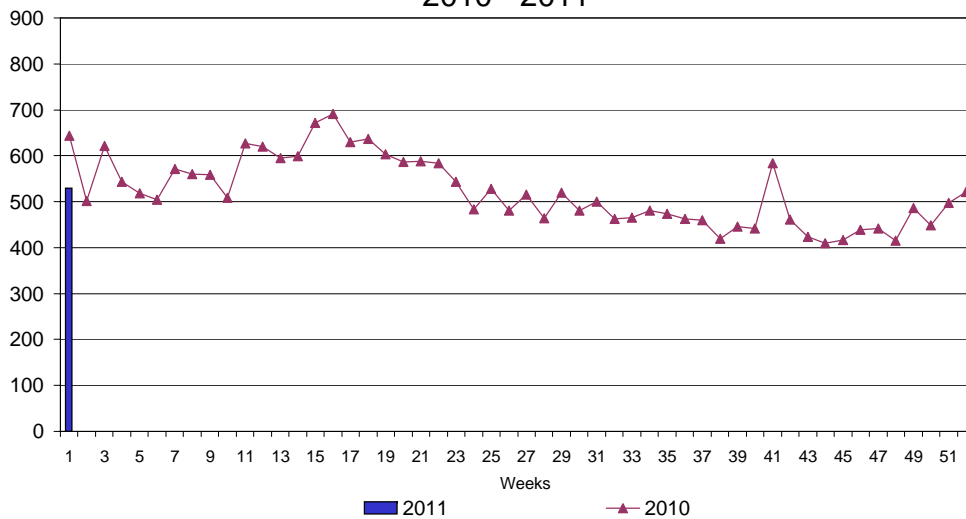
UI Claims Comparison Year to Date



UI Initial Claims 2009 - 2011



UI Exhaustions 2010 - 2011



TDI Claims Comparison Year to Date

