



Rhode Island Department of Labor and Training

Weekly Update of Claims Activity

Week Ending: January 15, 2011

Unemployment Insurance

Initial Claims – 2,354 initial claims were processed during the week ending 1/15/11, a decrease of 731 from the previous week, and a decrease of 602 from a year ago.

Continued Claims – 19,568 continued claims were processed during the week of 1/15/11, a decrease of 864 from the previous week and a decrease of 2,473 from a year ago.

Workshare – gives employers an alternative to layoffs by allowing employees to work reduced hours and collect a percentage of regular UI benefits to compensate for lost pay. This week, 117 initial claims and 578 continued claims were processed. An estimated 28 layoffs were prevented this week, as a result of Workshare.

Emergency Unemployment Compensation 08 – EUC08, which became effective July 6, 2008, provides up to 53 weeks of federally funded benefits to eligible individuals who exhausted their UI claims. This week there were 577 new EUC08 claims processed and 12,768 continued claims processed (5,998 under tier I, 2,890 under tier II, 2,831 under tier III and 1,049 under tier IV).

Extended Benefits – are payable to individuals who have exhausted UI or EUC08 claims. This week, 120 new EB claims and 3,529 continued EB claims were processed.

Exhaustions – 582 individuals exhausted their regular payments this week, an increase of 48 from the previous week and a decrease of 40 from a year ago. There were 303 individuals that exhausted EUC08 and 83 individuals that exhausted EB.

Temporary Disability Insurance

Temporary Disability Insurance – 621 initial claims and 6,297 continued claims were processed for Temporary Disability Insurance. The average weekly TDI payment is \$443 per week. Rhode Island is currently paying an average of 11.0 weeks per new claim.

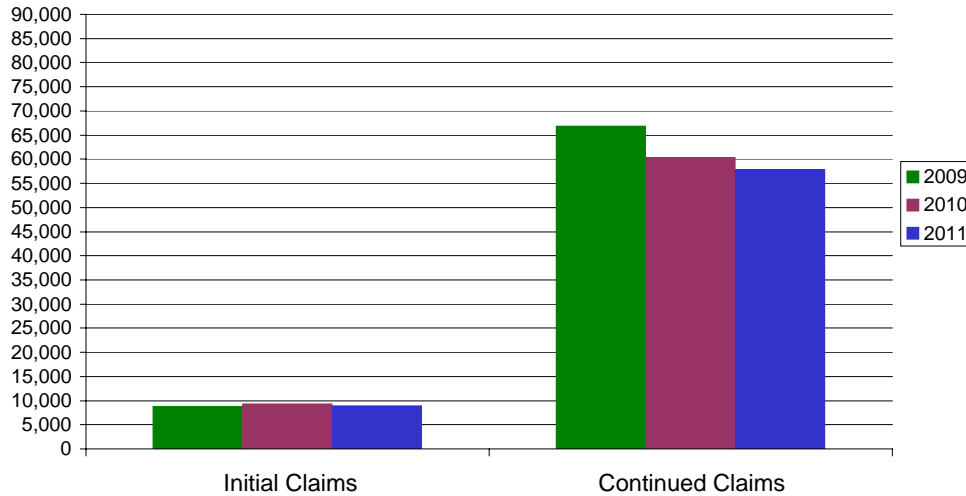
	Initial Claims			Continued Claims	TOTAL - Initial and Continued Claims			
	Total	New	Additional		Current Week	Previous Week	Year Ago	Two Years Ago
Total - All programs*	3,474	2,309	1,165	37,059	40,533	43,642	49,384	37,589
UI Claims	2,354	1,565	789	19,568	21,922	23,517	24,997	24,416
Change from:								
Previous Week	-731	-534	-197	-864	-1,595			
Year Ago	-602	-276	-326	-2,473	-3,075			
Two Years Ago	598	533	65	-3,092	-2,494			
EUC08 Claims	809	577	232	12,768	13,577	14,029	19,788	9,766
Extended Benefits	149	120	29	3,529	3,678	3,802	1,560	2
Interstate-Liable	45	25	20	616	661	657	765	998
Workshare	117	22	95	578	695	1,637	2,274	2,407
Workshare Equivalency	28	8	20	265	293	449	854	1,142
UI Exhaustions	-	-	-	582	582	534	622	489
EUC08 Exhaustions	-	-	-	303	303	333	4	1
EB Exhaustions	-	-	-	83	83	69	173	0
TDI Claims	621	516	105	6,297	6,918	7,285	9,063	9,014
Change from:								
Previous Week	-134	-120	-14	-233	-367			
Year Ago	-634	-534	-100	-1,511	-2,145			

* Includes UI, EUC08, EB, Workshare & Interstate Liable.

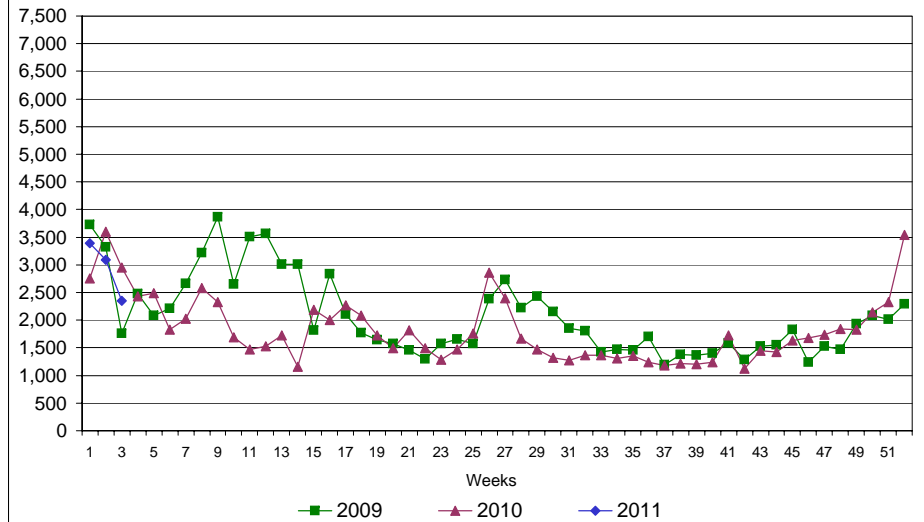
Rhode Island Department of Labor and Training

January 15, 2011

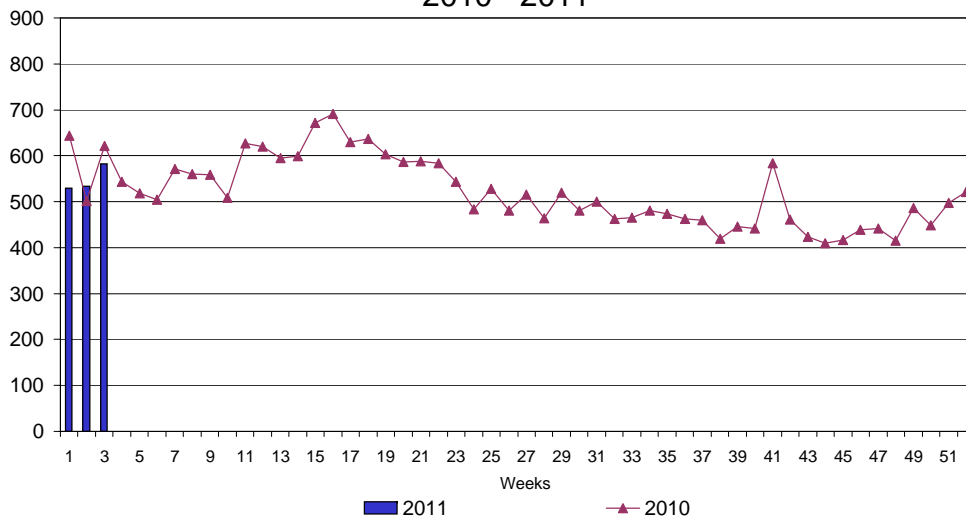
UI Claims Comparison Year to Date



UI Initial Claims 2009 - 2011



UI Exhaustions 2010 - 2011



TDI Claims Comparison Year to Date

