



Rhode Island Department of Labor and Training

Weekly Update of Claims Activity

Week Ending: January 22, 2011

Unemployment Insurance

Initial Claims – 2,148 initial claims were processed during the week ending 1/22/11, a decrease of 206 from the previous week, and a decrease of 283 from a year ago.

Continued Claims – 19,890 continued claims were processed during the week of 1/22/11, an increase of 322 from the previous week and a decrease of 867 from a year ago.

Workshare – gives employers an alternative to layoffs by allowing employees to work reduced hours and collect a percentage of regular UI benefits to compensate for lost pay. This week, 153 initial claims and 1,712 continued claims were processed. An estimated 38 layoffs were prevented this week, as a result of Workshare.

Emergency Unemployment Compensation 08 – EUC08, which became effective July 6, 2008, provides up to 53 weeks of federally funded benefits to eligible individuals who exhausted their UI claims. This week there were 523 new EUC08 claims processed and 12,943 continued claims processed (6,146 under tier I, 2,961 under tier II, 2,952 under tier III and 884 under tier IV).

Extended Benefits – are payable to individuals who have exhausted UI or EUC08 claims. This week, 74 new EB claims and 3,532 continued EB claims were processed.

Exhaustions – 480 individuals exhausted their regular payments this week, a decrease of 102 from the previous week and a decrease of 64 from a year ago. There were 180 individuals that exhausted EUC08 and 97 individuals that exhausted EB.

Temporary Disability Insurance

Temporary Disability Insurance – 582 initial claims and 6,523 continued claims were processed for Temporary Disability Insurance. The average weekly TDI payment is \$448 per week. Rhode Island is currently paying an average of 11.0 weeks per new claim.

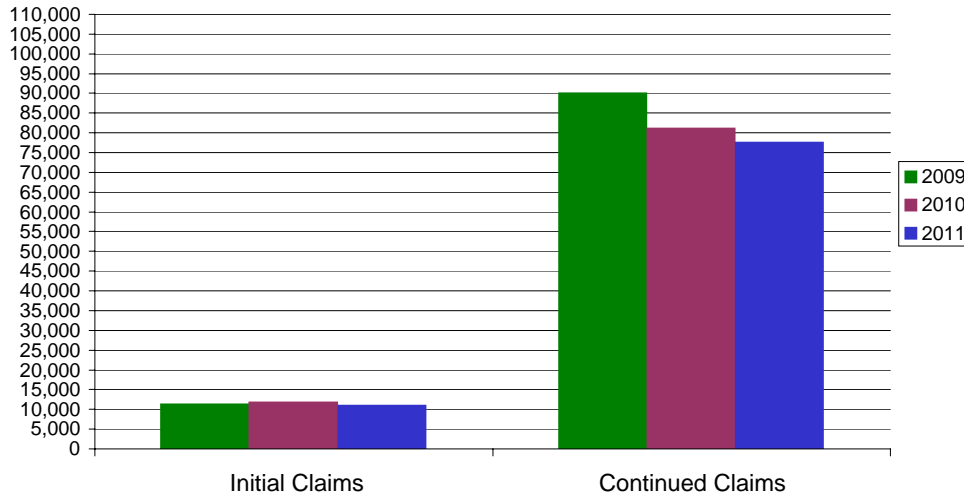
	Initial Claims			Continued Claims	TOTAL - Initial and Continued Claims			
	Total	New	Additional		Current Week	Previous Week	Year Ago	Two Years Ago
Total - All programs*	3,144	2,100	1,044	38,642	41,786	40,533	48,592	38,567
UI Claims	2,148	1,432	716	19,890	22,038	21,922	23,188	25,780
Change from:								
Previous Week	-206	-133	-73	322	116			
Year Ago	-283	-94	-189	-867	-1,150			
Two Years Ago	-324	-91	-233	-3,418	-3,742			
EUC08 Claims	706	523	183	12,943	13,649	13,577	19,819	9,578
Extended Benefits	106	74	32	3,532	3,638	3,678	1,371	2
Interstate-Liable	31	17	14	565	596	661	757	934
Workshare	153	54	99	1,712	1,865	695	3,457	2,273
Workshare Equivalency	38	13	25	443	481	593	893	647
UI Exhaustions	-	-	-	480	480	582	544	460
EUC08 Exhaustions	-	-	-	180	180	303	46	1
EB Exhaustions	-	-	-	97	97	83	145	0
TDI Claims	582	486	96	6,523	7,105	6,918	8,016	7,947
Change from:								
Previous Week	-39	-30	-9	226	187			
Year Ago	-178	-125	-53	-733	-911			

* Includes UI, EUC08, EB, Workshare & Interstate Liable.

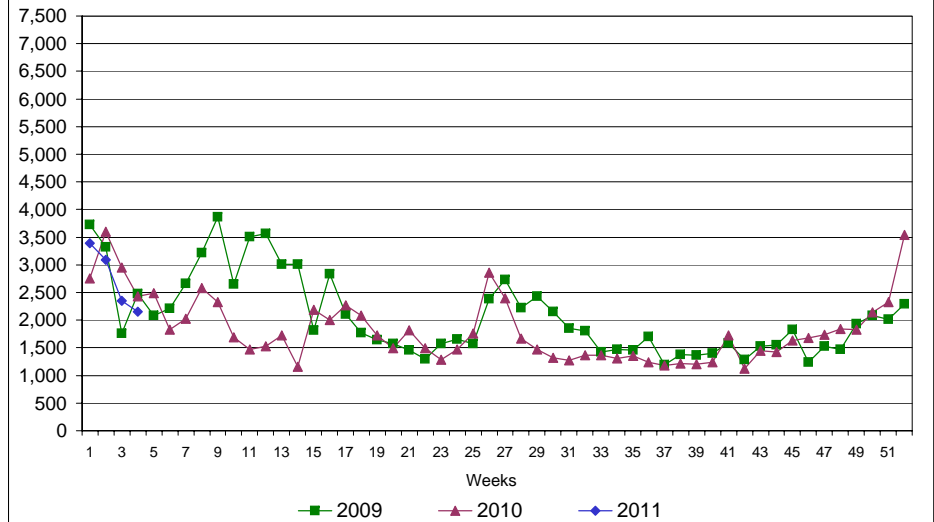
Rhode Island Department of Labor and Training

January 22, 2011

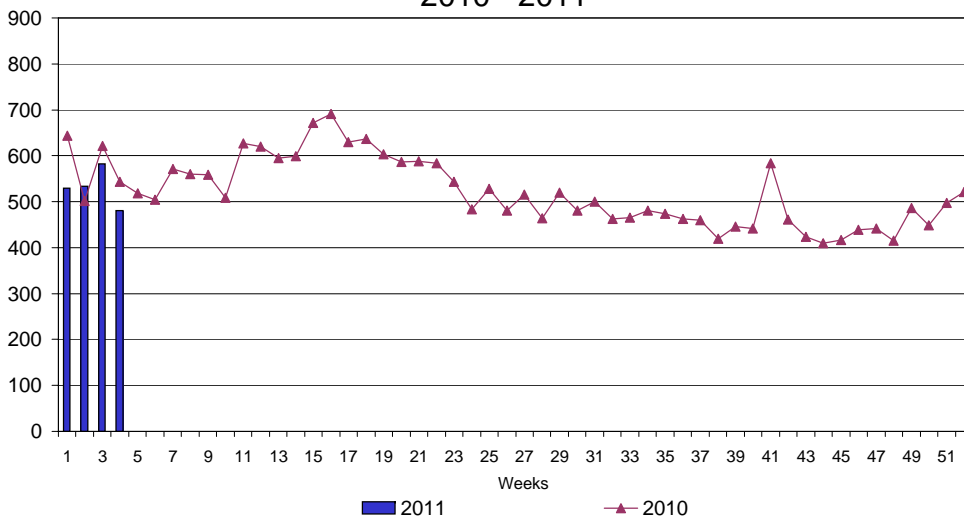
UI Claims Comparison Year to Date



UI Initial Claims 2009 - 2011



UI Exhaustions 2010 - 2011



TDI Claims Comparison Year to Date

