



## Rhode Island Department of Labor and Training

# **Weekly Update of Claims Activity**

**Week Ending: January 29, 2011**

### ***Unemployment Insurance***

**Initial Claims** – 1,952 initial claims were processed during the week ending 1/29/11, a decrease of 196 from the previous week, and a decrease of 536 from a year ago.

**Continued Claims** – 20,289 continued claims were processed during the week of 1/29/11, an increase of 399 from the previous week and a decrease of 3,300 from a year ago.

**Workshare** – gives employers an alternative to layoffs by allowing employees to work reduced hours and collect a percentage of regular UI benefits to compensate for lost pay. This week, 142 initial claims and 1,793 continued claims were processed. An estimated 35 layoffs were prevented this week, as a result of Workshare.

**Emergency Unemployment Compensation 08** – EUC08, which became effective July 6, 2008, provides up to 53 weeks of federally funded benefits to eligible individuals who exhausted their UI claims. This week there were 529 new EUC08 claims processed and 13,116 continued claims processed (6,156 under tier I, 3,023 under tier II, 3,064 under tier III and 873 under tier IV).

**Extended Benefits** – are payable to individuals who have exhausted UI or EUC08 claims. This week, 56 new EB claims and 3,447 continued EB claims were processed.

**Exhaustions** – 516 individuals exhausted their regular payments this week, an increase of 36 from the previous week and a decrease of 2 from a year ago. There were 160 individuals that exhausted EUC08 and 149 individuals that exhausted EB.

### ***Temporary Disability Insurance***

**Temporary Disability Insurance** – 926 initial claims and 6,879 continued claims were processed for Temporary Disability Insurance. The average weekly TDI payment is \$435 per week. Rhode Island is currently paying an average of 10.9 weeks per new claim.

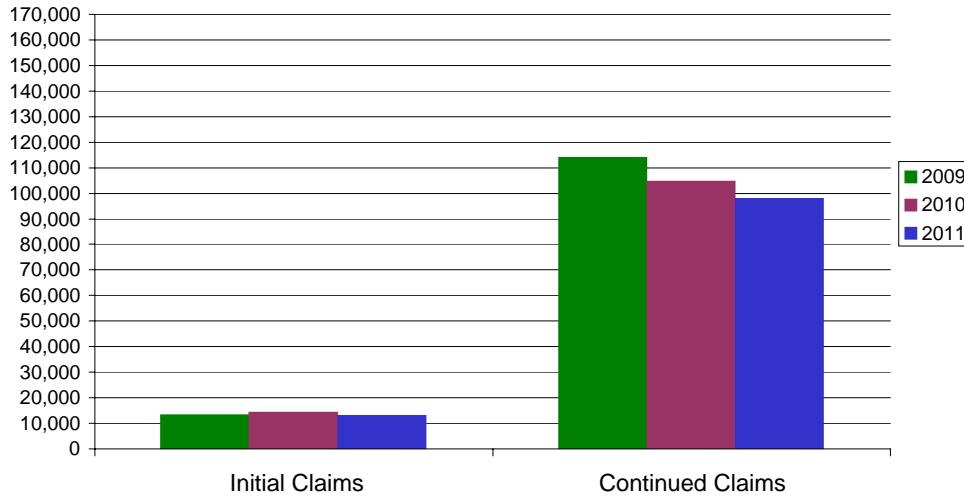
	<b>Initial Claims</b>			<b>Continued Claims</b>	<b>TOTAL - Initial and Continued Claims</b>			
	<b>Total</b>	<b>New</b>	<b>Additional</b>		<b>Current Week</b>	<b>Previous Week</b>	<b>Year Ago</b>	<b>Two Years Ago</b>
<b>Total - All programs*</b>	2,949	1,878	1,071	39,250	42,199	41,786	51,420	39,589
<b>UI Claims</b>	1,952	1,234	718	20,289	22,241	22,038	26,077	25,943
Change from:								
Previous Week	-196	-198	2	399	203			
Year Ago	-536	-620	84	-3,300	-3,836			
Two Years Ago	-136	-59	-77	-3,566	-3,702			
<b>EUC08 Claims</b>	727	529	198	13,116	13,843	13,649	20,884	10,066
<b>Extended Benefits</b>	83	56	27	3,447	3,530	3,638	1,211	2
<b>Interstate-Liable</b>	45	31	14	605	650	596	769	1,015
<b>Workshare</b>	142	28	114	1,793	1,935	1,865	2,479	2,563
<b>Workshare Equivalency</b>	35	7	28	577	612	481	625	762
<b>UI Exhaustions</b>	-	-	-	516	516	480	518	502
<b>EUC08 Exhaustions</b>	-	-	-	160	160	180	142	2
<b>EB Exhaustions</b>	-	-	-	149	149	97	107	0
<b>TDI Claims</b>	926	777	149	6,879	7,805	7,105	7,867	N/A
Change from:								
Previous Week	344	291	53	356	700			
Year Ago	228	199	29	-290	-62			

\* Includes UI, EUC08, EB, Workshare & Interstate Liable.

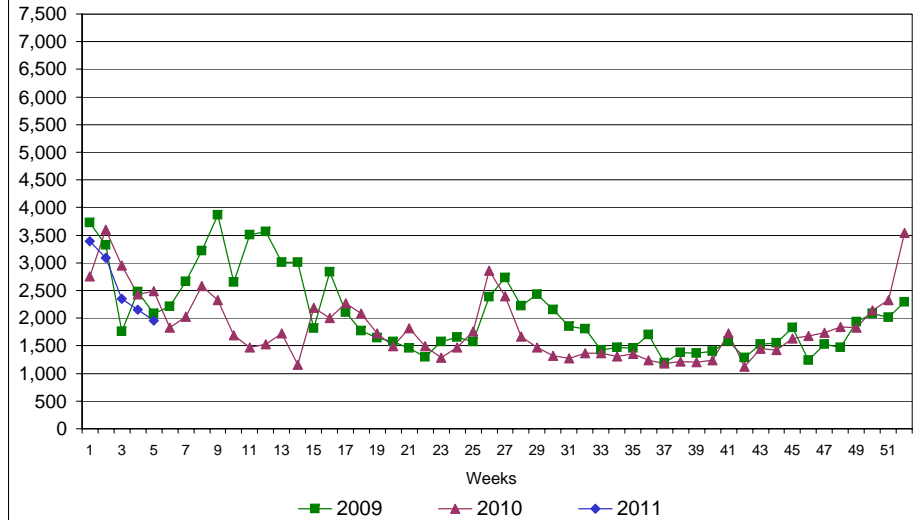
# Rhode Island Department of Labor and Training

## January 29, 2011

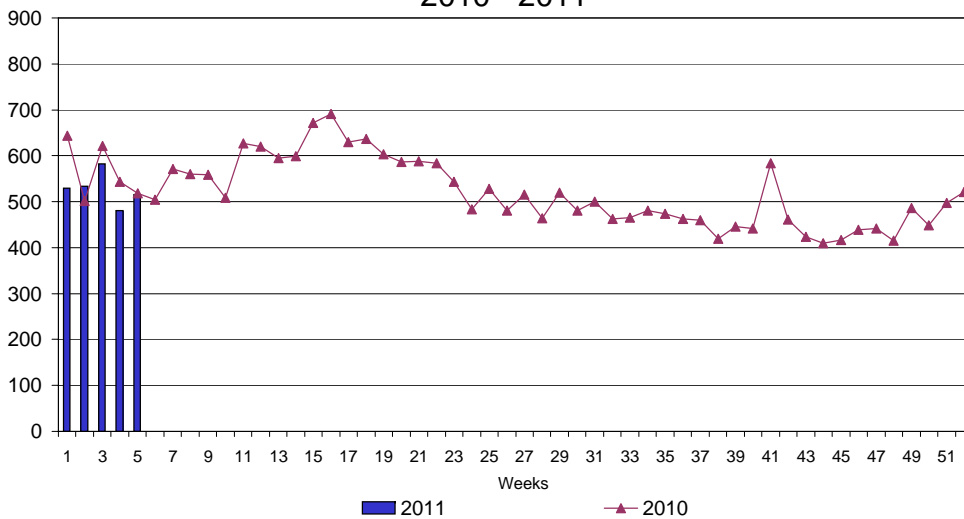
### UI Claims Comparison Year to Date



### UI Initial Claims 2009 - 2011



### UI Exhaustions 2010 - 2011



### TDI Claims Comparison Year to Date

