



Rhode Island Department of Labor and Training

Weekly Update of Claims Activity

Week Ending: February 5, 2011

Unemployment Insurance

Initial Claims – 1,849 initial claims were processed during the week ending 2/5/11, a decrease of 103 from the previous week, and an increase of 16 from a year ago.

Continued Claims – 20,775 continued claims were processed during the week of 2/5/11, an increase of 486 from the previous week and a decrease of 2,369 from a year ago.

Workshare – gives employers an alternative to layoffs by allowing employees to work reduced hours and collect a percentage of regular UI benefits to compensate for lost pay. This week, 50 initial claims and 1,398 continued claims were processed. An estimated 13 layoffs were prevented this week, as a result of Workshare.

Emergency Unemployment Compensation 08 – EUC08, which became effective July 6, 2008, provides up to 53 weeks of federally funded benefits to eligible individuals who exhausted their UI claims. This week there were 517 new EUC08 claims processed and 13,344 continued claims processed (6,170 under tier I, 3,221 under tier II, 2,983 under tier III and 970 under tier IV).

Extended Benefits – are payable to individuals who have exhausted UI or EUC08 claims. This week, 62 new EB claims and 3,356 continued EB claims were processed.

Exhaustions – 501 individuals exhausted their regular payments this week, a decrease of 15 from the previous week and a decrease of 3 from a year ago. There were 188 individuals that exhausted EUC08 and 123 individuals that exhausted EB.

Temporary Disability Insurance

Temporary Disability Insurance – 950 initial claims and 6,441 continued claims were processed for Temporary Disability Insurance. The average weekly TDI payment is \$450 per week. Rhode Island is currently paying an average of 10.9 weeks per new claim.

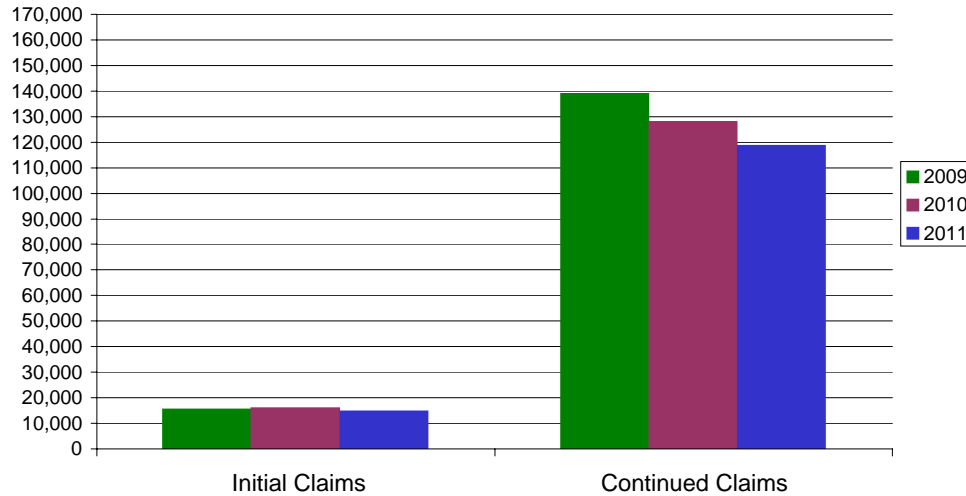
	Initial Claims			Continued Claims	TOTAL - Initial and Continued Claims			
	Total	New	Additional		Current Week	Previous Week	Year Ago	Two Years Ago
Total - All programs*	2,738	1,771	967	39,432	42,170	42,199	51,211	41,632
UI Claims	1,849	1,171	678	20,775	22,624	22,241	24,977	27,286
Change from:								
Previous Week	-103	-63	-40	486	383			
Year Ago	16	-20	36	-2,369	-2,353			
Two Years Ago	-362	-295	-67	-4,300	-4,662			
EUC08 Claims	703	517	186	13,344	14,047	13,843	20,868	10,535
Extended Benefits	100	62	38	3,356	3,456	3,530	1,091	11
Interstate-Liable	36	19	17	559	595	650	827	937
Workshare	50	2	48	1,398	1,448	1,935	3,448	2,863
Workshare Equivalency	13	1	12	365	378	612	859	785
UI Exhaustions	-	-	-	501	501	516	504	462
EUC08 Exhaustions	-	-	-	188	188	160	221	51
EB Exhaustions	-	-	-	123	123	149	140	0
TDI Claims	950	791	159	6,441	7,391	7,805	8,507	9,294
Change from:								
Previous Week	24	14	10	-438	-414			
Year Ago	164	147	17	-1,280	-1,116			

* Includes UI, EUC08, EB, Workshare & Interstate Liable.

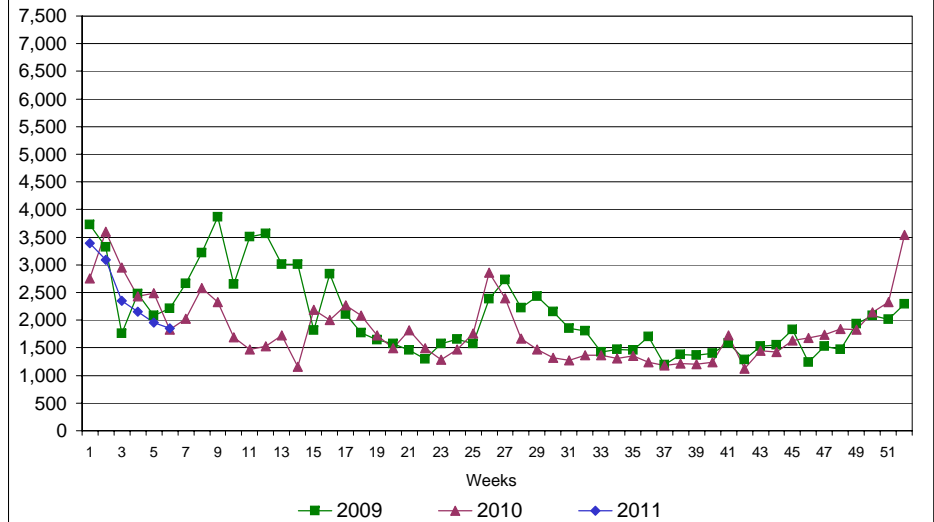
Rhode Island Department of Labor and Training

February 5, 2011

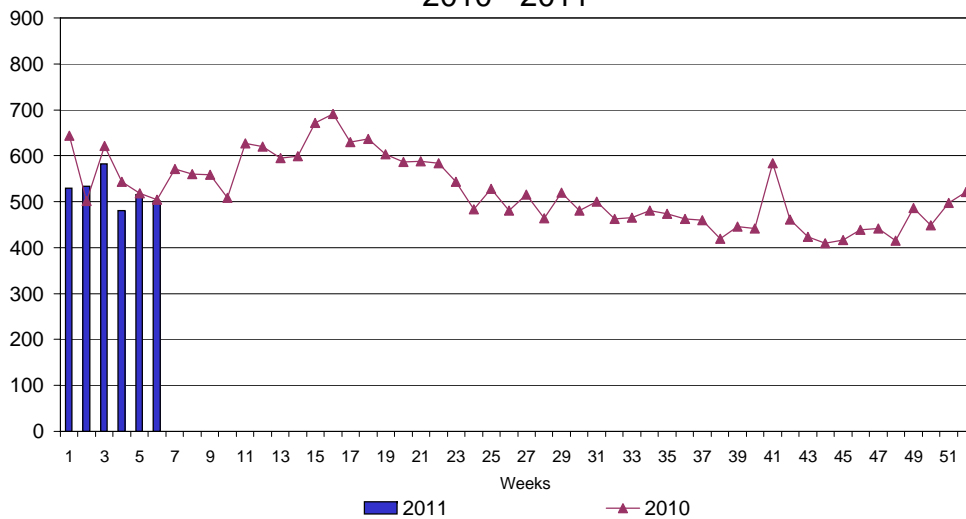
UI Claims Comparison Year to Date



UI Initial Claims 2009 - 2011



UI Exhaustions 2010 - 2011



TDI Claims Comparison Year to Date

