



Rhode Island Department of Labor and Training

Weekly Update of Claims Activity

Week Ending: February 12, 2011

Unemployment Insurance

Initial Claims – 2,300 initial claims were processed during the week ending 2/12/11, an increase of 451 from the previous week, and an increase of 275 from a year ago.

Continued Claims – 21,597 continued claims were processed during the week of 2/12/11, an increase of 822 from the previous week and a decrease of 194 from a year ago.

Workshare – gives employers an alternative to layoffs by allowing employees to work reduced hours and collect a percentage of regular UI benefits to compensate for lost pay. This week, 138 initial claims and 1,158 continued claims were processed. An estimated 41 layoffs were prevented this week, as a result of Workshare.

Emergency Unemployment Compensation 08 – EUC08, which became effective July 6, 2008, provides up to 53 weeks of federally funded benefits to eligible individuals who exhausted their UI claims. This week there were 598 new EUC08 claims processed and 13,501 continued claims processed (6,173 under tier I, 3,313 under tier II, 2,894 under tier III and 1,121 under tier IV).

Extended Benefits – are payable to individuals who have exhausted UI or EUC08 claims. This week, 70 new EB claims and 3,218 continued EB claims were processed.

Exhaustions – 504 individuals exhausted their regular payments this week, an increase of 3 from the previous week and a decrease of 67 from a year ago. There were 169 individuals that exhausted EUC08 and 169 individuals that exhausted EB.

Temporary Disability Insurance

Temporary Disability Insurance – 1,208 initial claims and 7,766 continued claims were processed for Temporary Disability Insurance. The average weekly TDI payment is \$438 per week. Rhode Island is currently paying an average of 10.8 weeks per new claim.

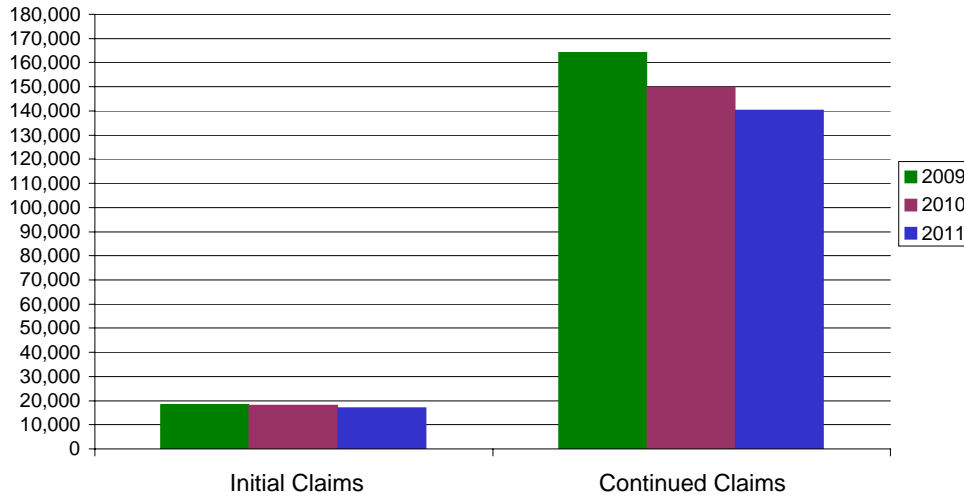
	Initial Claims			Continued Claims	TOTAL - Initial and Continued Claims			
	Total	New	Additional		Current Week	Previous Week	Year Ago	Two Years Ago
Total - All programs*	3,405	2,203	1,202	40,119	43,524	42,170	48,086	42,751
UI Claims	2,300	1,464	836	21,597	23,897	22,624	23,816	27,802
Change from:								
Previous Week	451	293	158	822	1,273			
Year Ago	275	228	47	-194	81			
Two Years Ago	-363	-426	63	-3,542	-3,905			
EUC08 Claims	806	598	208	13,501	14,307	14,047	20,350	10,770
Extended Benefits	107	70	37	3,218	3,325	3,456	1,000	31
Interstate-Liable	54	25	29	645	699	595	752	1,025
Workshare	138	46	92	1,158	1,296	1,448	2,168	3,123
Workshare Equivalency	41	15	26	282	323	378	533	854
UI Exhaustions	-	-	-	504	504	501	571	536
EUC08 Exhaustions	-	-	-	169	169	188	316	160
EB Exhaustions	-	-	-	169	169	123	126	1
TDI Claims	1,208	1,019	189	7,766	8,974	7,391	8,214	7,980
Change from:								
Previous Week	258	228	30	1,325	1,583			
Year Ago	252	226	26	508	760			

* Includes UI, EUC08, EB, Workshare & Interstate Liable.

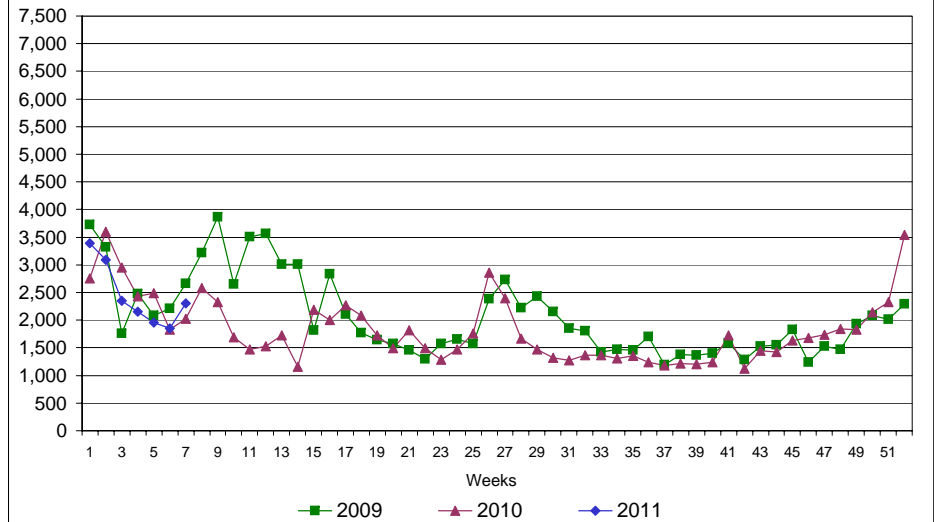
Rhode Island Department of Labor and Training

February 12, 2011

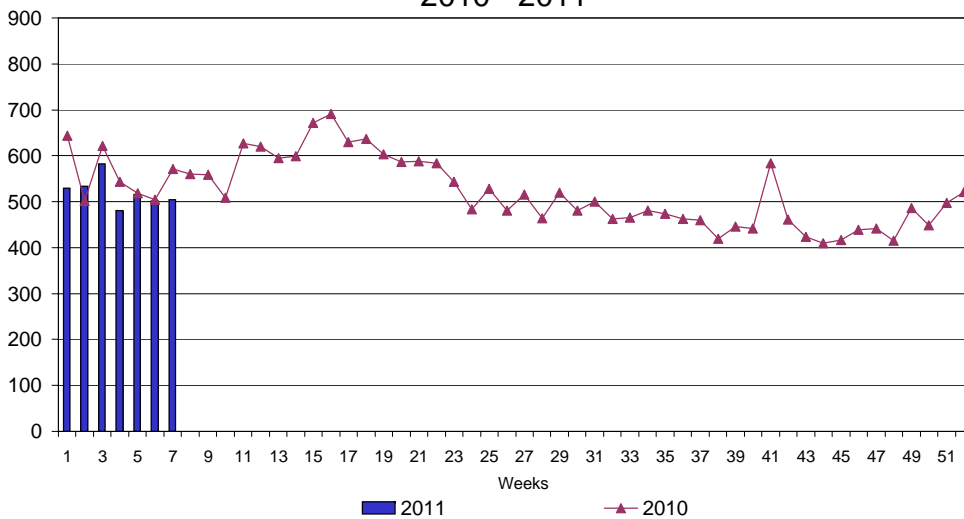
UI Claims Comparison Year to Date



UI Initial Claims 2009 - 2011



UI Exhaustions 2010 - 2011



TDI Claims Comparison Year to Date

