



Rhode Island Department of Labor and Training

Weekly Update of Claims Activity

Week Ending: February 19, 2011

Unemployment Insurance

Initial Claims – 2,049 initial claims were processed during the week ending 2/19/11, a decrease of 251 from the previous week, and a decrease of 533 from a year ago.

Continued Claims – 21,531 continued claims were processed during the week of 2/19/11, a decrease of 66 from the previous week and a decrease of 639 from a year ago.

Workshare – gives employers an alternative to layoffs by allowing employees to work reduced hours and collect a percentage of regular UI benefits to compensate for lost pay. This week, 137 initial claims and 1,581 continued claims were processed. An estimated 36 layoffs were prevented this week, as a result of Workshare.

Emergency Unemployment Compensation 08 – EUC08, which became effective July 6, 2008, provides up to 53 weeks of federally funded benefits to eligible individuals who exhausted their UI claims. This week there were 522 new EUC08 claims processed and 13,582 continued claims processed (6,269 under tier I, 3,368 under tier II, 2,717 under tier III and 1,228 under tier IV).

Extended Benefits – are payable to individuals who have exhausted UI or EUC08 claims. This week, 52 new EB claims and 3,106 continued EB claims were processed.

Exhaustions – 514 individuals exhausted their regular payments this week, an increase of 10 from the previous week and a decrease of 46 from a year ago. There were 150 individuals that exhausted EUC08 and 143 individuals that exhausted EB.

Temporary Disability Insurance

Temporary Disability Insurance – 900 initial claims and 7,225 continued claims were processed for Temporary Disability Insurance. The average weekly TDI payment is \$438 per week. Rhode Island is currently paying an average of 10.7 weeks per new claim.

	Initial Claims			Continued Claims	TOTAL - Initial and Continued Claims			
	Total	New	Additional		Current Week	Previous Week	Year Ago	Two Years Ago
Total - All programs*	2,990	1,842	1,148	40,442	43,432	43,524	49,912	46,293
UI Claims	2,049	1,207	842	21,531	23,580	23,897	24,752	31,064
Change from:								
Previous Week	-251	-257	6	-66	-317			
Year Ago	-533	-246	-287	-639	-1,172			
Two Years Ago	-1,172	-680	-492	-6,312	-7,484			
EUC08 Claims	700	522	178	13,582	14,282	14,307	20,607	11,210
Extended Benefits	70	52	18	3,106	3,176	3,325	866	89
Interstate-Liable	34	19	15	642	676	699	748	974
Workshare	137	42	95	1,581	1,718	1,296	2,939	2,956
Workshare Equivalency	36	14	22	397	433	323	731	816
UI Exhaustions	-	-	-	514	514	504	560	512
EUC08 Exhaustions	-	-	-	150	150	169	189	115
EB Exhaustions	-	-	-	143	143	169	141	7
TDI Claims	900	747	153	7,225	8,125	8,974	8,599	7,752
Change from:								
Previous Week	-308	-272	-36	-541	-849			
Year Ago	200	162	38	-674	-474			

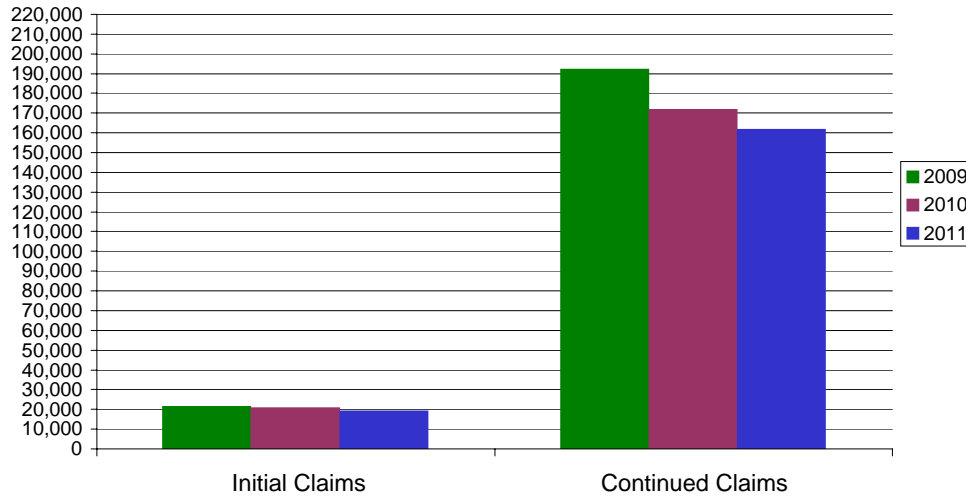
* Includes UI, EUC08, EB, Workshare & Interstate Liable.

Equal Opportunity Employer / Program / Auxiliary aids and services available upon request to individuals with disabilities / TTY via RI Relay 711.

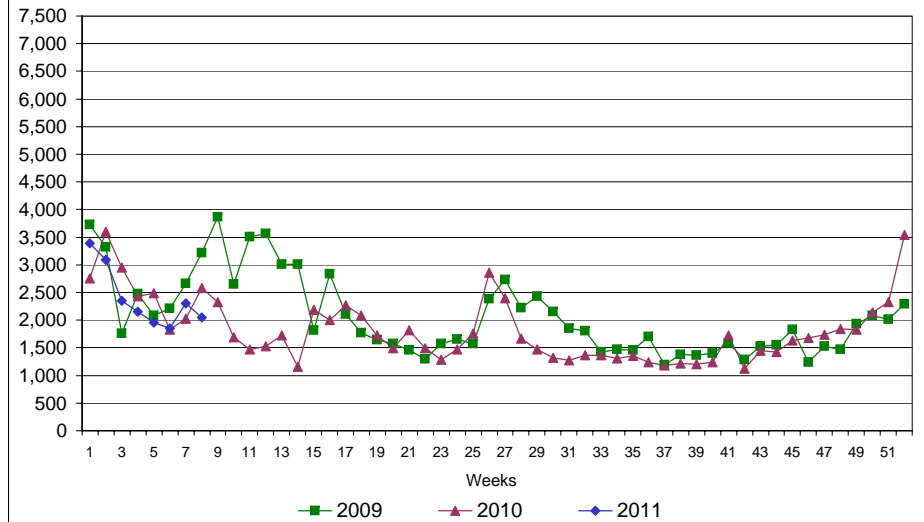
Rhode Island Department of Labor and Training

February 19, 2011

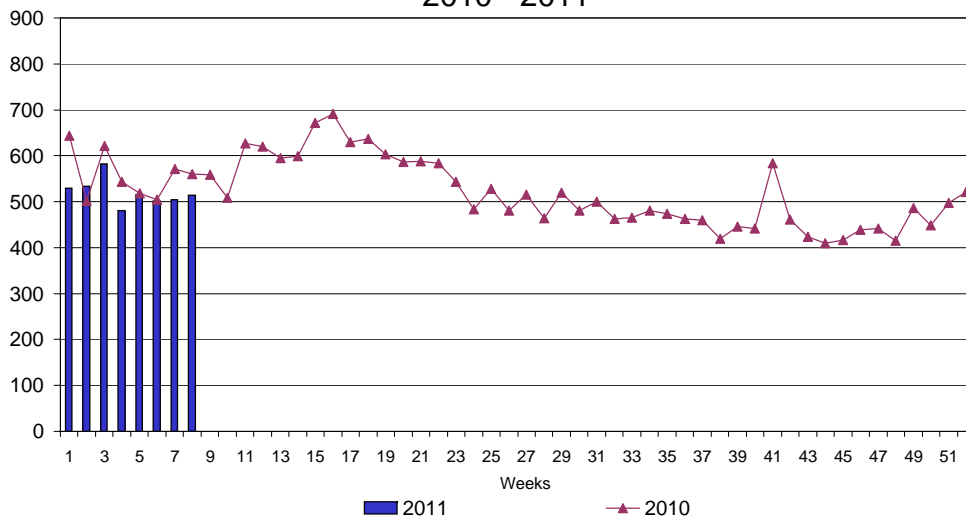
UI Claims Comparison Year to Date



UI Initial Claims 2009 - 2011



UI Exhaustions 2010 - 2011



TDI Claims Comparison Year to Date

