



## Rhode Island Department of Labor and Training

# *Weekly Update of Claims Activity*

*Week Ending: February 26, 2011*

### **Unemployment Insurance**

**Initial Claims** – 2,822 initial claims were processed during the week ending 2/26/11, an increase of 773 from the previous week, and an increase of 495 from a year ago. The number of initial claims filed to date is down 4.8 percent below last year and down 15.3 percent from two years ago.

**Continued Claims** – 21,141 continued claims were processed during the week of 2/26/11, a decrease of 390 from the previous week and a decrease of 2,792 from a year ago. The number of continued claims filed to date is down 7.0 percent from a year ago and down 20.6 percent from two years ago.

**Workshare** – gives employers an alternative to layoffs by allowing employees to work reduced hours and collect a percentage of regular UI benefits to compensate for lost pay. This week, 95 initial claims and 974 continued claims were processed. An estimated 29 layoffs were prevented this week, as a result of Workshare.

**Emergency Unemployment Compensation 08** – EUC08, which became effective July 6, 2008, provides up to 53 weeks of federally funded benefits to eligible individuals who exhausted their UI claims. This week there were 470 new EUC08 claims processed and 13,594 continued claims processed (6,207 under tier I, 3,383 under tier II, 2,617 under tier III and 1,387 under tier IV).

**Extended Benefits** – are payable to individuals who have exhausted UI or EUC08 claims. This week, 40 new EB claims and 2,938 continued EB claims were processed.

**Exhaustions** – 498 individuals exhausted their regular payments this week, a decrease of 16 from the previous week and a decrease of 60 from a year ago. There were 148 individuals that exhausted EUC08 and 169 individuals that exhausted EB.

### **Temporary Disability Insurance**

**Temporary Disability Insurance** – 747 initial claims and 7,510 continued claims were processed for Temporary Disability Insurance. The average weekly TDI payment is \$446 per week. Rhode Island is currently paying an average of 10.8 weeks per new claim.

	<b>Initial Claims</b>			<b>Continued Claims</b>	<b>TOTAL - Initial and Continued Claims</b>			
	<b>Total</b>	<b>New</b>	<b>Additional</b>		<b>Current Week</b>	<b>Previous Week</b>	<b>Year Ago</b>	<b>Two Years Ago</b>
<b>Total - All programs*</b>	3,657	1,494	2,163	39,196	42,853	43,432	50,937	48,723
<b>UI Claims</b>	2,822	902	1,920	21,141	23,963	23,580	26,260	32,481
Change from:								
Previous Week	773	-305	1,078	-390	383			
Year Ago	495	-165	660	-2,792	-2,297			
Two Years Ago	-1,042	-1,866	824	-7,476	-8,518			
<b>EUC08 Claims</b>	646	470	176	13,594	14,240	14,282	20,244	11,089
<b>Extended Benefits</b>	63	40	23	2,938	3,001	3,176	785	190
<b>Interstate-Liable</b>	31	13	18	549	580	676	692	1,028
<b>Workshare</b>	95	69	26	974	1,069	1,718	2,956	3,935
<b>Workshare Equivalency</b>	29	22	7	219	248	433	725	1,077
<b>UI Exhaustions</b>	-	-	-	498	498	514	558	531
<b>EUC08 Exhaustions</b>	-	-	-	148	148	150	261	328
<b>EB Exhaustions</b>	-	-	-	169	169	143	121	18
<b>TDI Claims</b>	747	623	124	7,510	8,257	8,125	8,853	8,420
Change from:								
Previous Week	-153	-124	-29	285	132			
Year Ago	-280	-208	-72	-316	-596			

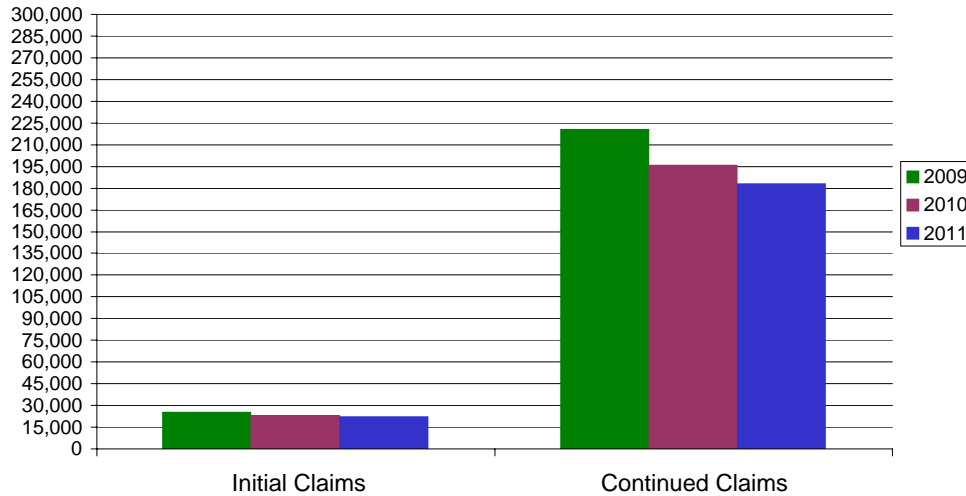
\* Includes UI, EUC08, EB, Workshare & Interstate Liable.

Equal Opportunity Employer / Program / Auxiliary aids and services available upon request to individuals with disabilities / TTY via RI Relay 711.

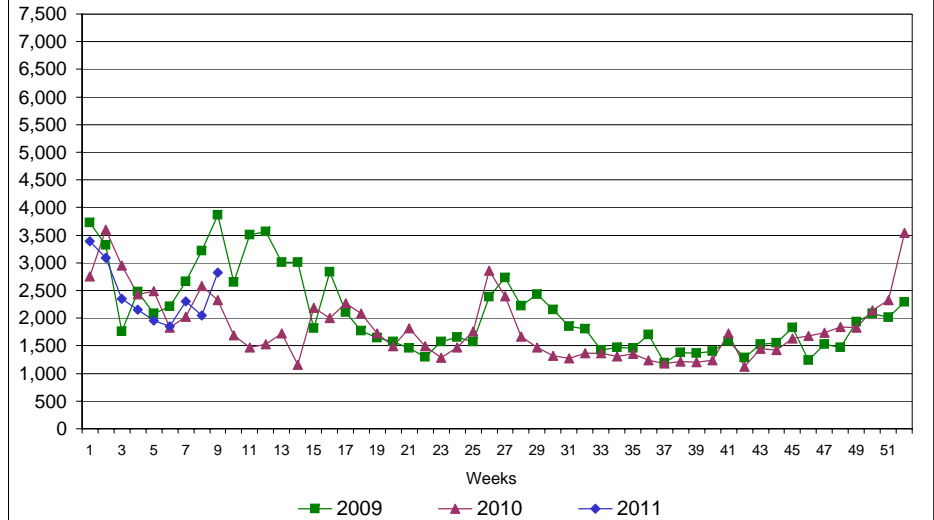
# Rhode Island Department of Labor and Training

## February 26, 2011

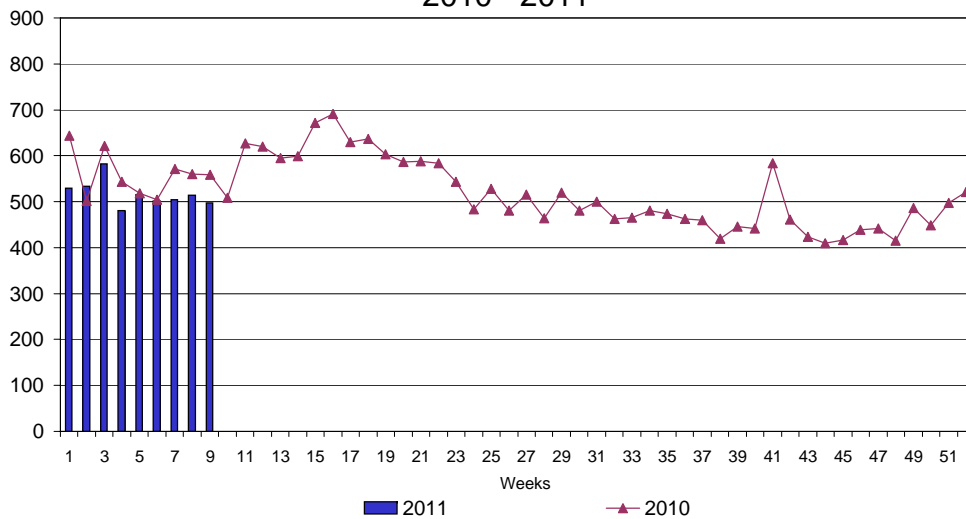
### UI Claims Comparison Year to Date



### UI Initial Claims 2009 - 2011



### UI Exhaustions 2010 - 2011



### TDI Claims Comparison Year to Date

