



Rhode Island Department of Labor and Training

Weekly Update of Claims Activity

Week Ending: March 12, 2011

Unemployment Insurance

Initial Claims – 1,540 initial claims were processed during the week ending 3/12/11, a decrease of 140 from the previous week, and an increase of 73 from a year ago. The number of initial claims filed to date is down 3.9 percent below last year and down 25.1 percent from two years ago.

Continued Claims – 20,905 continued claims were processed during the week of 3/12/11, a decrease of 2,170 from the previous week and a decrease of 2,439 from a year ago. The number of continued claims filed to date is down 6.7 percent from a year ago and down 22.5 percent from two years ago.

Workshare – gives employers an alternative to layoffs by allowing employees to work reduced hours and collect a percentage of regular UI benefits to compensate for lost pay. This week, 92 initial claims and 1,594 continued claims were processed. An estimated 30 layoffs were prevented this week, as a result of Workshare.

Emergency Unemployment Compensation 08 – EUC08, which became effective July 6, 2008, provides up to 53 weeks of federally funded benefits to eligible individuals who exhausted their UI claims. This week there were 570 new EUC08 claims processed and 13,871 continued claims processed (6,288 under tier I, 3,511 under tier II, 2,499 under tier III and 1,573 under tier IV).

Extended Benefits – are payable to individuals who have exhausted UI or EUC08 claims. This week, 106 new EB claims and 2,599 continued EB claims were processed.

Exhaustions – 574 individuals exhausted their regular payments this week, an increase of 11 from the previous week and a decrease of 53 from a year ago. There were 252 individuals that exhausted EUC08 and 164 individuals that exhausted EB.

Temporary Disability Insurance

Temporary Disability Insurance – 841 initial claims and 7,941 continued claims were processed for Temporary Disability Insurance. The average weekly TDI payment is \$431 per week. Rhode Island is currently paying an average of 10.8 weeks per new claim.

	Initial Claims			Continued Claims	TOTAL - Initial and Continued Claims			
	Total	New	Additional		Current Week	Previous Week	Year Ago	Two Years Ago
Total - All programs*	2,607	1,727	880	39,528	42,135	44,557	50,304	50,008
UI Claims	1,540	952	588	20,905	22,445	24,755	24,811	31,729
Change from:								
Previous Week	-140	43	-183	-2,170	-2,310			
Year Ago	73	-95	168	-2,439	-2,366			
Two Years Ago	-1,970	-1,510	-460	-7,314	-9,284			
EUC08 Claims	815	570	245	13,871	14,686	14,492	21,317	11,250
Extended Benefits	132	106	26	2,599	2,731	2,829	651	465
Interstate-Liable	28	17	11	559	587	675	786	972
Workshare	92	82	10	1,594	1,686	1,806	2,739	5,592
Workshare Equivalency	30	28	2	408	438	432	687	1,580
UI Exhaustions	-	-	-	574	574	563	627	642
EUC08 Exhaustions	-	-	-	252	252	158	250	N/A
EB Exhaustions	-	-	-	164	164	194	90	12
TDI Claims	841	688	153	7,941	8,782	8,770	8,487	10,214
Change from:								
Previous Week	-10	-13	3	22	12			
Year Ago	-57	-26	-31	352	295			

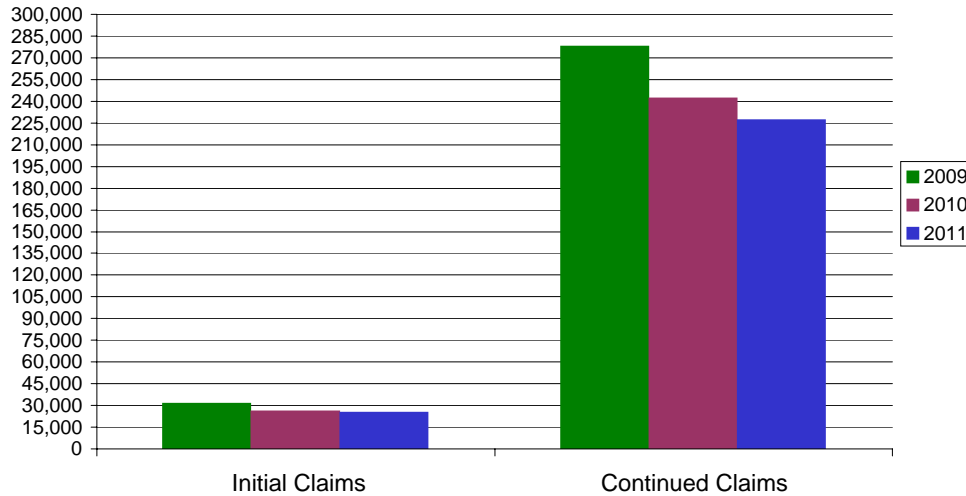
* Includes UI, EUC08, EB, Workshare & Interstate Liable.

Equal Opportunity Employer / Program / Auxiliary aids and services available upon request to individuals with disabilities / TTY via RI Relay 711.

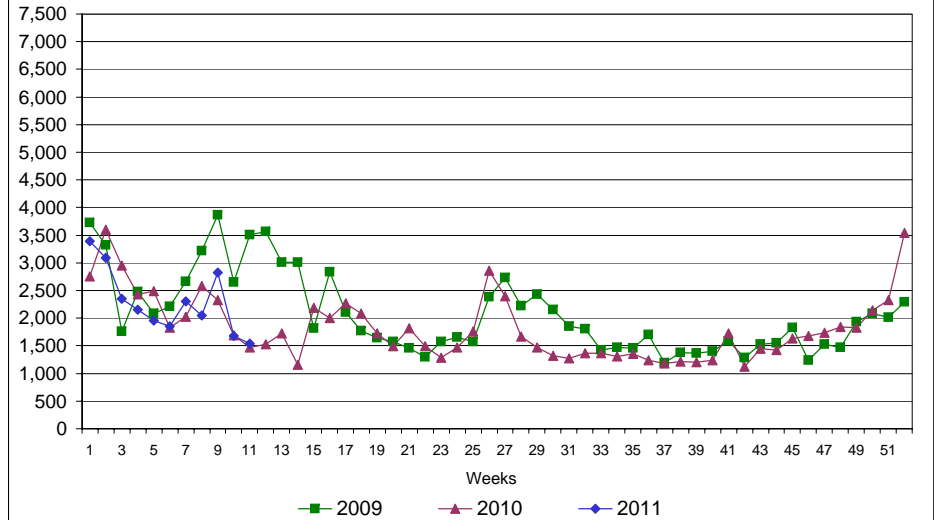
Rhode Island Department of Labor and Training

March 12, 2011

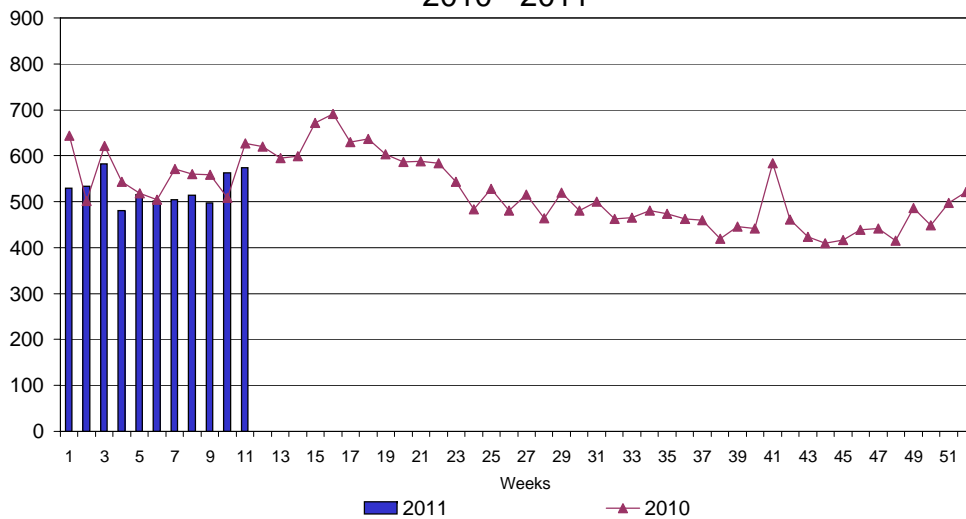
UI Claims Comparison Year to Date



UI Initial Claims 2009 - 2011



UI Exhaustions 2010 - 2011



TDI Claims Comparison Year to Date

