



## Rhode Island Department of Labor and Training

# *Weekly Update of Claims Activity*

*Week Ending: March 19, 2011*

### **Unemployment Insurance**

**Initial Claims** – 1,391 initial claims were processed during the week ending 3/19/11, a decrease of 149 from the previous week, and a decrease of 134 from a year ago. The number of initial claims filed to date is down 4.2 percent below last year and down 31.9 percent from two years ago.

**Continued Claims** – 20,300 continued claims were processed during the week of 3/19/11, a decrease of 605 from the previous week and a decrease of 2,263 from a year ago. The number of continued claims filed to date is down 7.1 percent from a year ago and down 25.5 percent from two years ago.

**Workshare** – gives employers an alternative to layoffs by allowing employees to work reduced hours and collect a percentage of regular UI benefits to compensate for lost pay. This week, 80 initial claims and 2,642 continued claims were processed. An estimated 23 layoffs were prevented this week, as a result of Workshare.

**Emergency Unemployment Compensation 08** – EUC08, which became effective July 6, 2008, provides up to 53 weeks of federally funded benefits to eligible individuals who exhausted their UI claims. This week there were 502 new EUC08 claims processed and 13,989 continued claims processed (6,396 under tier I, 3,558 under tier II, 2,576 under tier III and 1,459 under tier IV).

**Extended Benefits** – are payable to individuals who have exhausted UI or EUC08 claims. This week, 124 new EB claims and 2,484 continued EB claims were processed.

**Exhaustions** – 577 individuals exhausted their regular payments this week, an increase of 3 from the previous week and a decrease of 43 from a year ago. There were 304 individuals that exhausted EUC08 and 106 individuals that exhausted EB.

### **Temporary Disability Insurance**

**Temporary Disability Insurance** – 861 initial claims and 8,106 continued claims were processed for Temporary Disability Insurance. The average weekly TDI payment is \$438 per week. Rhode Island is currently paying an average of 10.8 weeks per new claim.

|                              | Initial Claims |        |            | Continued Claims | TOTAL - Initial and Continued Claims |               |          |               |
|------------------------------|----------------|--------|------------|------------------|--------------------------------------|---------------|----------|---------------|
|                              | Total          | New    | Additional |                  | Current Week                         | Previous Week | Year Ago | Two Years Ago |
| <b>Total - All programs*</b> | 2,343          | 1,494  | 849        | 39,966           | 42,309                               | 42,135        | 49,953   | 54,263        |
| <b>UI Claims</b>             | 1,391          | 786    | 605        | 20,300           | 21,691                               | 22,445        | 24,088   | 35,888        |
| Change from:                 |                |        |            |                  |                                      |               |          |               |
| Previous Week                | -149           | -166   | 17         | -605             | -754                                 |               |          |               |
| Year Ago                     | -134           | -115   | -19        | -2,263           | -2,397                               |               |          |               |
| Two Years Ago                | -2,173         | -1,445 | -728       | -12,024          | -14,197                              |               |          |               |
| <b>EUC08 Claims</b>          | 705            | 502    | 203        | 13,989           | 14,694                               | 14,686        | 21,698   | 12,089        |
| <b>Extended Benefits</b>     | 136            | 124    | 12         | 2,484            | 2,620                                | 2,731         | 697      | 608           |
| <b>Interstate-Liable</b>     | 31             | 17     | 14         | 551              | 582                                  | 587           | 690      | 1,090         |
| <b>Workshare</b>             | 80             | 65     | 15         | 2,642            | 2,722                                | 1,686         | 2,780    | 4,588         |
| <b>Workshare Equivalency</b> | 23             | 19     | 4          | 751              | 774                                  | 438           | 725      | 1,362         |
| <b>UI Exhaustions</b>        | -              | -      | -          | 577              | 577                                  | 574           | 620      | 633           |
| <b>EUC08 Exhaustions</b>     | -              | -      | -          | 304              | 304                                  | 252           | 232      | 262           |
| <b>EB Exhaustions</b>        | -              | -      | -          | 106              | 106                                  | 164           | 131      | 43            |
| <b>TDI Claims</b>            | 861            | 706    | 155        | 8,106            | 8,967                                | 8,782         | 8,439    | 9,078         |
| Change from:                 |                |        |            |                  |                                      |               |          |               |
| Previous Week                | 20             | 18     | 2          | 165              | 185                                  |               |          |               |
| Year Ago                     | 124            | 96     | 28         | 404              | 528                                  |               |          |               |

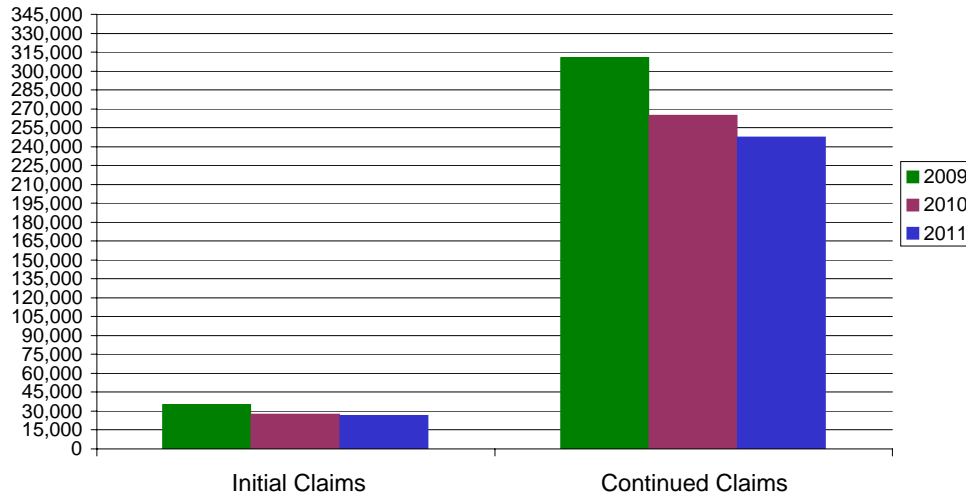
\* Includes UI, EUC08, EB, Workshare & Interstate Liable.

Equal Opportunity Employer / Program / Auxiliary aids and services available upon request to individuals with disabilities / TTY via RI Relay 711.

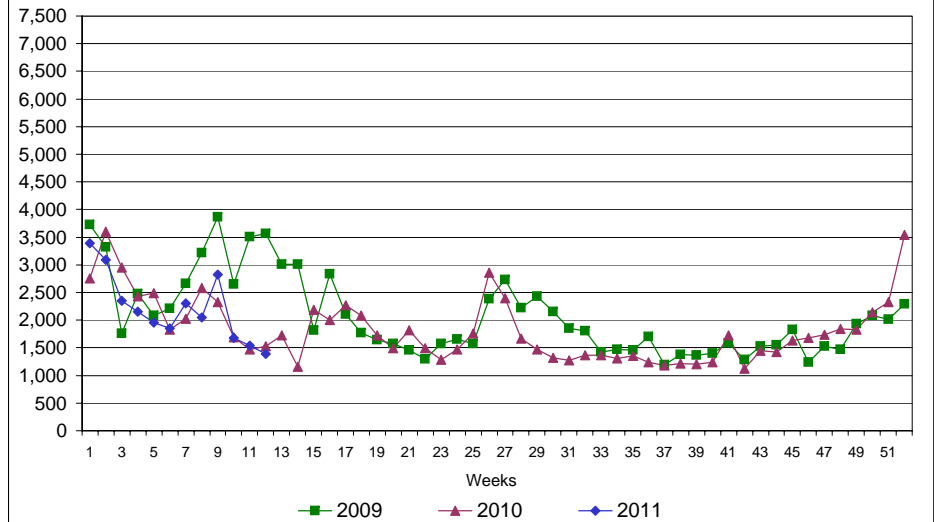
# Rhode Island Department of Labor and Training

## March 19, 2011

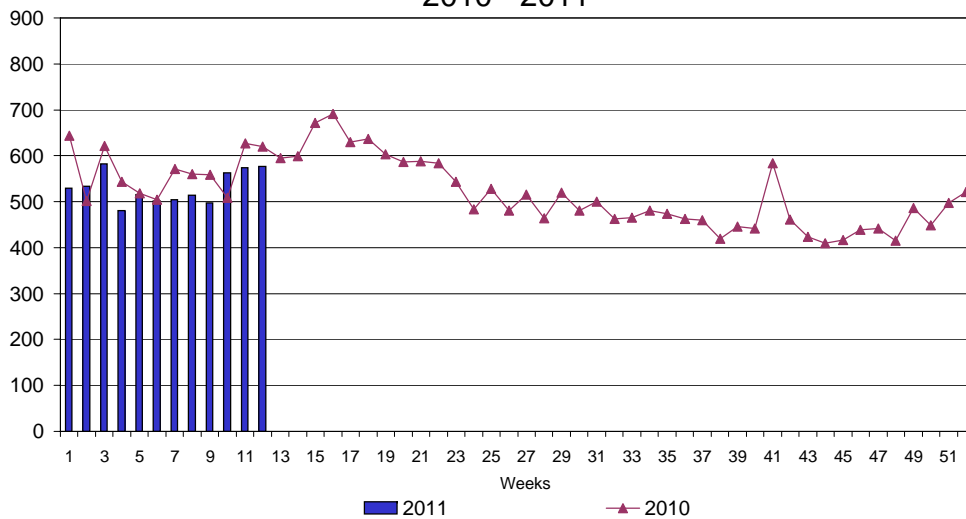
### UI Claims Comparison Year to Date



### UI Initial Claims 2009 - 2011



### UI Exhaustions 2010 - 2011



### TDI Claims Comparison Year to Date

