



Rhode Island Department of Labor and Training

Weekly Update of Claims Activity

Week Ending: March 26, 2011

Unemployment Insurance

Initial Claims – 1,050 initial claims were processed during the week ending 3/26/11, a decrease of 341 from the previous week, and a decrease of 678 from a year ago. The number of initial claims filed to date is down 6.5 percent below last year and down 37.8 percent from two years ago.

Continued Claims – 19,766 continued claims were processed during the week of 3/26/11, a decrease of 534 from the previous week and a decrease of 2,328 from a year ago. The number of continued claims filed to date is down 7.0 percent from a year ago and down 28.1 percent from two years ago.

Workshare – gives employers an alternative to layoffs by allowing employees to work reduced hours and collect a percentage of regular UI benefits to compensate for lost pay. This week, 87 initial claims and 1,558 continued claims were processed. An estimated 17 layoffs were prevented this week, as a result of Workshare.

Emergency Unemployment Compensation 08 – EUC08, which became effective July 6, 2008, provides up to 53 weeks of federally funded benefits to eligible individuals who exhausted their UI claims. This week there were 493 new EUC08 claims processed and 14,049 continued claims processed (6,418 under tier I, 3,676 under tier II, 2,606 under tier III and 1,349 under tier IV).

Extended Benefits – are payable to individuals who have exhausted UI or EUC08 claims. This week, 126 new EB claims and 2,510 continued EB claims were processed.

Exhaustions – 558 individuals exhausted their regular payments this week, a decrease of 19 from the previous week and a decrease of 37 from a year ago. There were 283 individuals that exhausted EUC08 and 102 individuals that exhausted EB.

Temporary Disability Insurance

Temporary Disability Insurance – 763 initial claims and 7,645 continued claims were processed for Temporary Disability Insurance. The average weekly TDI payment is \$441 per week. Rhode Island is currently paying an average of 10.7 weeks per new claim.

	Initial Claims			Continued Claims	TOTAL - Initial and Continued Claims			
	Total	New	Additional		Current Week	Previous Week	Year Ago	Two Years Ago
Total - All programs*	2,000	1,309	691	38,508	40,508	42,309	49,288	55,452
UI Claims	1,050	584	466	19,766	20,816	21,691	23,822	36,306
Change from:								
Previous Week	-341	-202	-139	-534	-875			
Year Ago	-678	-512	-166	-2,328	-3,006			
Two Years Ago	-1,956	-1,271	-685	-13,534	-15,490			
EUC08 Claims	686	493	193	14,049	14,735	14,694	21,346	12,211
Extended Benefits	140	126	14	2,510	2,650	2,620	559	783
Interstate-Liable	37	23	14	625	662	582	780	1,076
Workshare	87	83	4	1,558	1,645	2,722	2,781	5,076
Workshare Equivalency	17	16	1	414	431	774	681	1,342
UI Exhaustions	-	-	-	558	558	577	595	638
EUC08 Exhaustions	-	-	-	283	283	304	341	108
EB Exhaustions	-	-	-	102	102	106	103	36
TDI Claims	763	632	131	7,645	8,408	8,967	8,186	8,371
Change from:								
Previous Week	-98	-74	-24	-461	-559			
Year Ago	42	35	7	180	222			

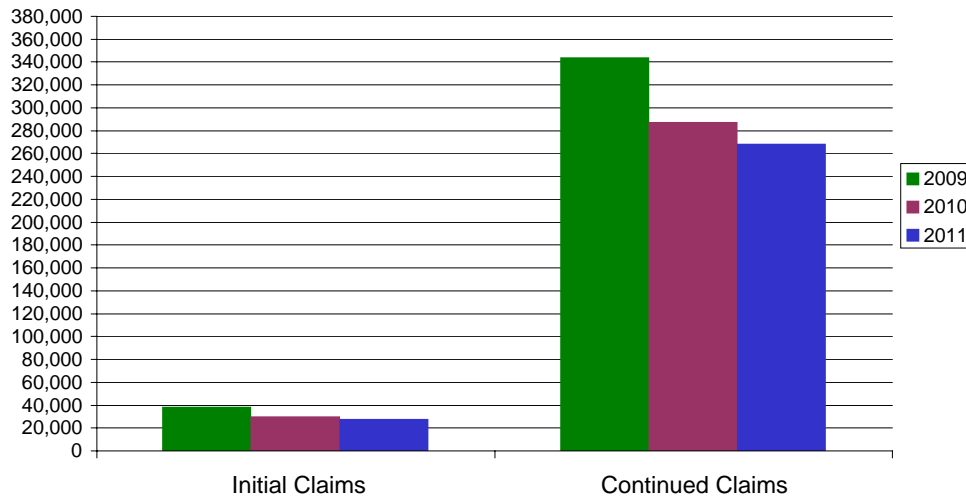
* Includes UI, EUC08, EB, Workshare & Interstate Liable.

Equal Opportunity Employer / Program / Auxiliary aids and services available upon request to individuals with disabilities / TTY via RI Relay 711.

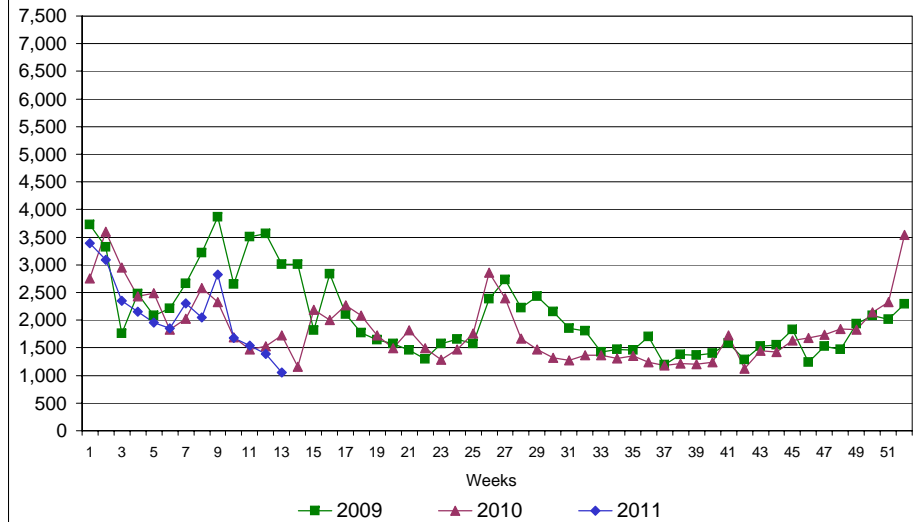
Rhode Island Department of Labor and Training

March 26, 2011

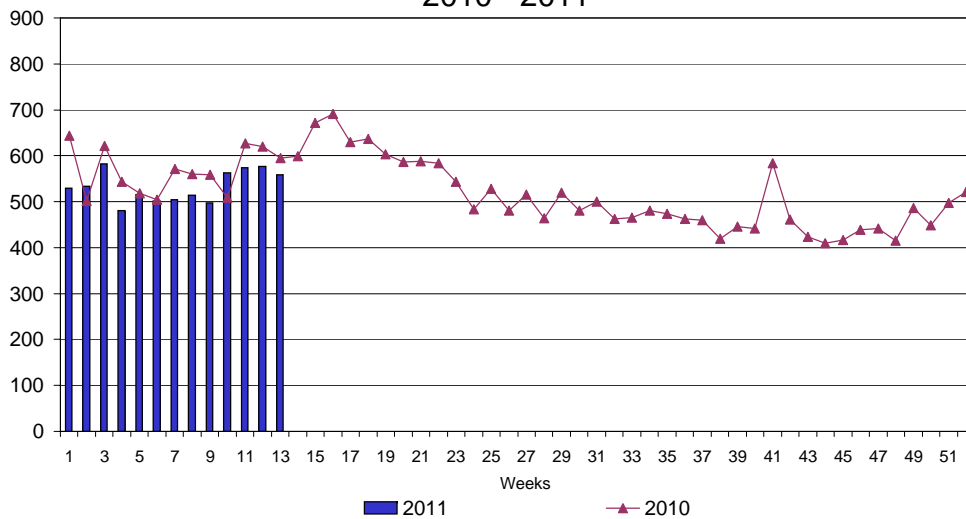
UI Claims Comparison Year to Date



UI Initial Claims 2009 - 2011



UI Exhaustions 2010 - 2011



TDI Claims Comparison Year to Date

