



## Rhode Island Department of Labor and Training

# *Weekly Update of Claims Activity*

*Week Ending: April 2, 2011*

### **Unemployment Insurance**

**Initial Claims** – 1,121 initial claims were processed during the week ending 4/2/11, an increase of 71 from the previous week, and a decrease of 38 from a year ago. The number of initial claims filed to date is down 6.4 percent below last year and down 42.9 percent from two years ago.

**Continued Claims** – 19,212 continued claims were processed during the week of 4/2/11, a decrease of 534 from the previous week and a decrease of 1,035 from a year ago. The number of continued claims filed to date is down 7.3 percent from a year ago and down 30.9 percent from two years ago.

**Workshare** – gives employers an alternative to layoffs by allowing employees to work reduced hours and collect a percentage of regular UI benefits to compensate for lost pay. This week, 57 initial claims and 1,431 continued claims were processed. An estimated 13 layoffs were prevented this week, as a result of Workshare.

**Emergency Unemployment Compensation 08** – EUC08, which became effective July 6, 2008, provides up to 53 weeks of federally funded benefits to eligible individuals who exhausted their UI claims. This week there were 515 new EUC08 claims processed and 14,130 continued claims processed (6,420 under tier I, 3,858 under tier II, 2,568 under tier III and 1,284 under tier IV).

**Extended Benefits** – are payable to individuals who have exhausted UI or EUC08 claims. This week, 110 new EB claims and 2,482 continued EB claims were processed.

**Exhaustions** – 614 individuals exhausted their regular payments this week, an increase of 56 from the previous week and a decrease of 15 from a year ago. There were 283 individuals that exhausted EUC08 and 102 individuals that exhausted EB.

### **Temporary Disability Insurance**

**Temporary Disability Insurance** – 704 initial claims and 7,447 continued claims were processed for Temporary Disability Insurance. The average weekly TDI payment is \$440 per week. Rhode Island is currently paying an average of 10.7 weeks per new claim.

	Initial Claims			Continued Claims	TOTAL - Initial and Continued Claims			
	Total	New	Additional		Current Week	Previous Week	Year Ago	Two Years Ago
<b>Total - All programs*</b>	2,024	1,348	676	37,841	39,865	40,508	45,963	54,248
<b>UI Claims</b>	1,121	667	454	19,212	20,333	20,816	21,406	34,125
Change from:								
Previous Week	71	83	-12	-534	-463			
Year Ago	-38	10	-48	-1,035	-1,073			
Two Years Ago	-1,894	-1,498	-396	-11,898	-13,792			
<b>EUC08 Claims</b>	690	515	175	14,130	14,820	14,735	20,676	12,345
<b>Extended Benefits</b>	128	110	18	2,482	2,610	2,650	554	842
<b>Interstate-Liable</b>	28	16	12	586	614	662	682	1,088
<b>Workshare</b>	57	40	17	1,431	1,488	1,645	2,645	5,848
<b>Workshare Equivalency</b>	13	7	6	367	380	431	648	1,664
<b>UI Exhaustions</b>	-	-	-	614	614	558	599	698
<b>EUC08 Exhaustions</b>	-	-	-	283	283	283	1,140	313
<b>EB Exhaustions</b>	-	-	-	102	102	102	25	35
<b>TDI Claims</b>	704	578	126	7,447	8,151	8,408	7,425	8,035
Change from:								
Previous Week	-59	-54	-5	-198	-257			
Year Ago	277	227	50	449	726			

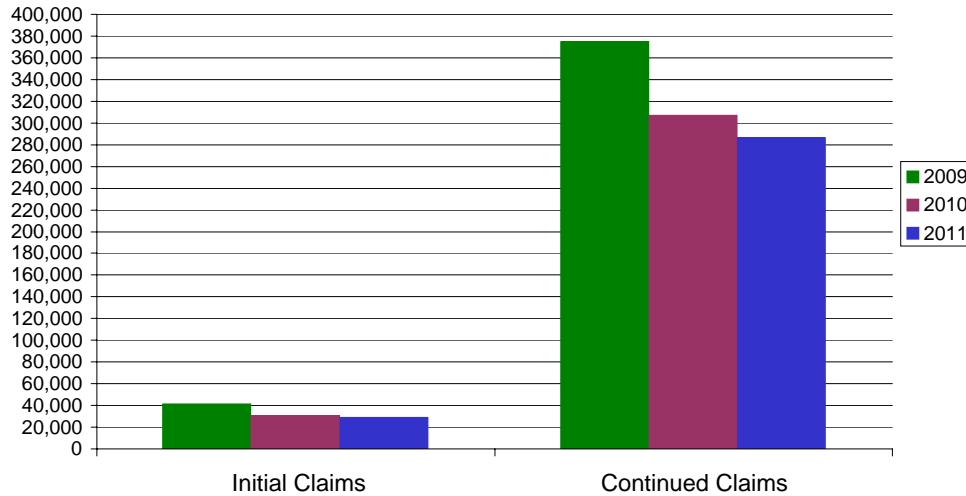
\* Includes UI, EUC08, EB, Workshare & Interstate Liable.

Equal Opportunity Employer / Program / Auxiliary aids and services available upon request to individuals with disabilities / TTY via RI Relay 711.

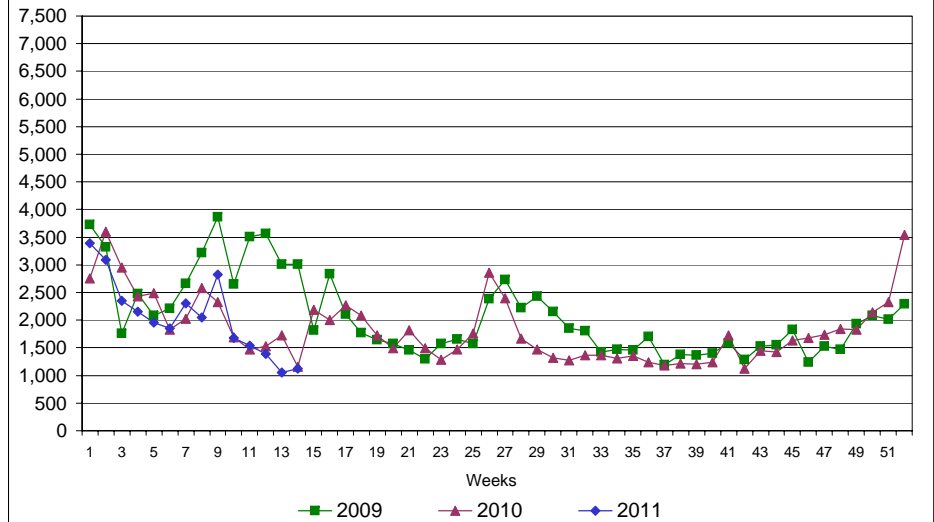
# Rhode Island Department of Labor and Training

## April 2, 2011

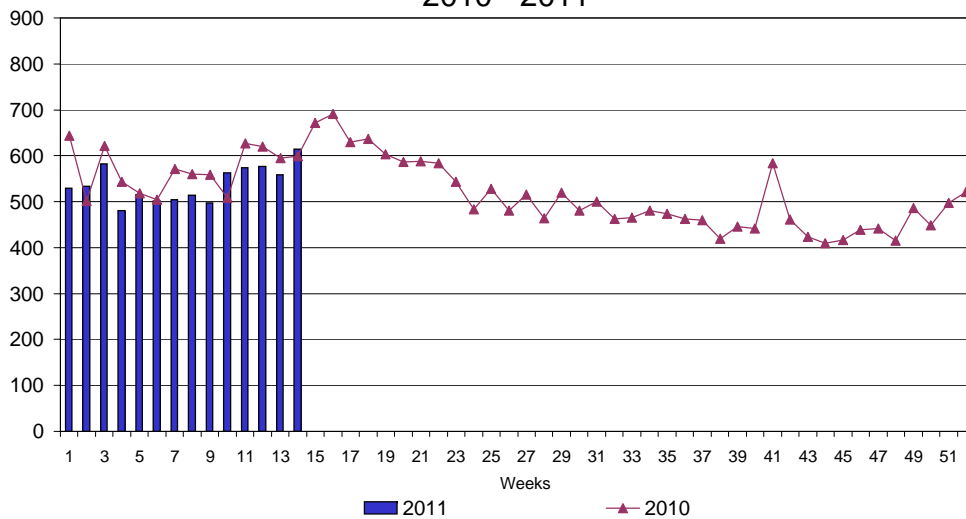
### UI Claims Comparison Year to Date



### UI Initial Claims 2009 - 2011



### UI Exhaustions 2010 - 2011



### TDI Claims Comparison Year to Date

